

CROWN POINT
**community
foundation™**

CREATING A BETTER FUTURE
IN SOUTH LAKE COUNTY

ELEVATING OUR **VISION**



2023
ANNUAL REPORT

LETTER FROM THE PRESIDENT AND CHAIRMAN OF THE BOARD

ELEVATING OUR VISION

A VISION IS NOT JUST A PICTURE OF WHAT
COULD BE; IT IS AN APPEAL TO OUR BETTER
SELVES, A CALL TO BECOME SOMETHING MORE.

ROSABETH MOSS KANTER
AMERICAN SOCIOLOGIST AND PROFESSOR



MARY B. NIELSEN
PRESIDENT



MIKE DEXTER
CHAIRMAN OF THE BOARD
EDWARD JONES INVESTMENTS

Dear Friends,

As we reflect on the past year we are proud to share the remarkable impact we have made together in our community. Our theme for 2023, "Elevating Our Vision," captures our commitment to dream bigger and strive for greater heights in our philanthropic efforts.

The foundation of our success lies in the permanent endowed funds established and supported by generous individuals like you—our fundholders, donors, and community partners. These funds allow us to envision and support initiatives that enrich the quality of life in South Lake County and beyond.

In 2023, the Crown Point Community Foundation awarded over \$1.5 million in grants and scholarships, thanks to the contributions of our dedicated fundholders, donors, and community partners. Each gift, grant, and scholarship is a testament to our collective effort to foster positive change for everyone who calls our community home.

Here are some of the initiatives we supported this year:

- Continued our Volunteer Fair & Blood Drive, Symphony on the Lawn, and Women's Giving Circle.
- Granted a wish for a South Lake County youth battling cancer, providing her and her family an unforgettable trip to Hawaii.
- Provided vital food and financial assistance to those in need, ensuring no one in our community goes hungry.
- Granted 113 scholarships to support students' academic pursuits.
- Supported the Crown Point Police Department in launching a Trading Card Program, strengthening relationships between officers and local youth.
- Partnered with Franciscan Health Crown Point to support their state-of-the-art Cardiology Program & Catheterization Lab.

We were incredibly grateful for your dedication and trust in the Crown Point Community Foundation. Your support allows us to dream bigger, innovate, and address the evolving needs of our community.

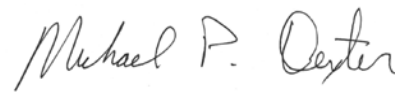
We are also excited to announce the Lilly Endowment Inc. GIFT VIII initiative, providing the CPCF a \$1,875,000 matching grant challenge. The matching opportunities outlined in this report prioritize immediate community needs and opportunities while also investing in long-term sustainability and capacity building for both the CPCF and the local nonprofit sector.

Together, we will continue to elevate our vision, making a positive impact now and for generations to come.

Yours in Philanthropy,



MARY B. NIELSEN



MICHAEL P. DEXTER



CONTENTS

- 2 BOARD OF DIRECTORS
- 3 CPCF STAFF
- 4 ABOUT THE CPCF
- 8 UNRESTRICTED FUNDS FOR COMMUNITY GRANTS
- 10 COMMUNITY GRANTS
- 11 FIELD OF INTEREST FUNDS AND GRANTS
- 12 SCHOLARSHIP FUNDS
- 14 DESIGNATED GRANTS
- 18 DONOR ADVISED FUNDS
- 19 AGENCY FUNDS
- 22 OPERATING SUSTAINABILITY FUNDS
- 26 DONORS
- 34 MEMORIALS
- 34 HONORARIUMS
- 36 FINANCIAL SUMMARY
- 37 FINANCIALS

FEATURE STORIES

- 5 CPCF CONNECTS THE COMMUNITY
- 6 CROWN POINT POLICE DEPARTMENT
- 9 ROBERT W. AND KAREN J. LYNN FAMILY ENDOWMENT FUND
- 17 ST. VINCENT DEPAUL / SOCIETY HOLY SPIRIT WINFIELD
- 20 LILLY ENDOWMENT INC. GIFT VIII INITIATIVE - \$1,875,000 MATCHING GRANT CHALLENGE
- 21 THE SALVATION ARMY
- 23 JOSEPH AND JANE NERNEY OPERATING ENDOWMENT FUND
- 24 MAKE-A-WISH
- 31 GIRL SCOUTS OF GREATER CHICAGO AND NWI
- 32 FRANCISCAN HEALTH - CROWN POINT



Scan QR Code to
Give Online Today:
theccpf.org/donate.html



WE ARE TRULY GRATEFUL FOR
THE SUPPORT FROM THE CPCF,
AND APPRECIATE THEIR
COMMITMENT TO SUPPORTING
LOCAL WISH FAMILIES!

RACHEL TERHORST
NWI ADVANCEMENT OFFICER
MAKE-A-WISH OHIO,
KENTUCKY & INDIANA



BOARD OF DIRECTORS 2023

Executive Committee



MIKE DEXTER
CHAIRMAN OF THE BOARD
EDWARD JONES INVESTMENTS



CYNDI WALSH
FIRST VICE CHAIR
WALSH ADVISORS



COREY LISS
SECOND VICE CHAIR
CARSTAR LISS AUTO BODY



DARRYL MILLER
TREASURER
RETIRED, INLAND STEEL



GREG FORSYTHE
SECRETARY
FORSYTHE WEALTH MANAGEMENT

Board of Directors



CHRISANNE CHRIST
EX OFFICIO
CENTIER BANK



JOHN BARNEY
EX OFFICIO
BARNEY ENTERPRISES



BEN BALLOU
BALLOU LAW, LLC



JEFF BAN
DVG TEAM, INC.



INDIRA BRIGHAM
UNIVERSITY OF ST. FRANCIS



DAN DUNCAN
PEOPLES BANK



KEVIN HUSEMAN
KINGDOM HOUSING, LLC



DEAN JONES
MIRAR CUSTOM HOMES, INC.



MARILYN KAPER
CEDAR LAKE FLORIST



JENNIFER LINSLEY
CROWN POINT COMMUNITY SCHOOLS



JOHN MANIS
HEIDBREder, INC.



JENNIFER RITTER
FEDERAL GOVERNMENT



DANIEL ROOT
COMMUNITY ADVOCATE



PAMELA SEAMAN, DO
SOUTH LAKE WOMEN'S HEALTH, P.C.

CPCF STAFF



MARY B. NIELSEN
PRESIDENT



LORI AMODEO
ADMINISTRATIVE AND
FINANCIAL ASSISTANT



GAIL L. ANDRE
FINANCIAL BUSINESS AND
DATA MANAGER



JEANETTE HUSS
MARKETING AND
COMMUNICATIONS MANAGER



KATIE SLY
PROGRAM AND ENGAGEMENT OFFICER



KATHY WILLIAMS
EVENTS ORGANIZER

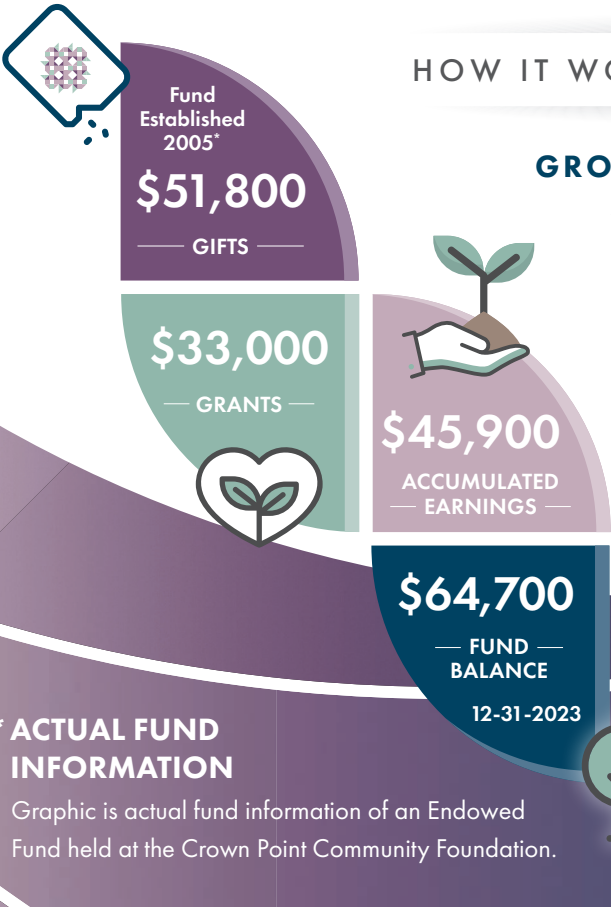
LEADERSHIP IS THE CAPACITY TO
TRANSLATE VISION INTO REALITY.

WARREN BENNIS
AMERICAN CONSULTANT AND AUTHOR

ABOUT THE CROWN POINT COMMUNITY FOUNDATION

Our vision is to serve as a well-managed agent for giving and receiving. The Crown Point Community Foundation will help to positively shape the future of the community and act as a facilitator of community good.

Since 1990, we have served the citizens of Crown Point, Cedar Lake, Lowell (Tri-Creek), and Winfield through a range of charitable and civic activities while helping individual donors achieve their philanthropic goals. As a public charitable organization, the CPCF is dedicated to building permanently endowed funds. A 19 member volunteer board of directors, composed of local leaders, oversees the investment of these pooled funds. These endowments then fund the distribution of grants to worthy causes each year.



HOW IT WORKS THE POWER OF ENDOWMENT

GROWTH OF AN ENDOWED FUND

With an initial gift of \$51,800 in 2005, the fund balance 17 years later is \$64,700 and has already distributed \$33,000 in grants!

Learn how to make your love for South Lake County and beyond last with your own Endowment Fund.



* ACTUAL FUND INFORMATION

Graphic is actual fund information of an Endowed Fund held at the Crown Point Community Foundation.

CREATING A BETTER FUTURE IN SOUTH LAKE COUNTY IN THREE STEPS

- 1

Receive Gifts

Individuals, groups and businesses create an endowment (permanent fund) at the CPCF.
- 2

Grow Gifts

The endowments are invested by the CPCF and its Board of Directors.
- 3

Give Gifts

Grants are awarded in specified cycles throughout the year. Grants are given both to causes which were specified by donors and to those that are selected by the CPCF grant committee.



PHOTOS CLOCKWISE FROM TOP LEFT: SANDRA NOE, MEALS ON WHEELS CEO, TALKS WITH ATTENDEES AT THE 2023 VOLUNTEER FAIR & BLOOD DRIVE / WOMEN'S GIVING CIRCLE ATTENDEES (FROM LEFT TO RIGHT): SARA JONES AND CAROL HIGHSMITH / NORTHWEST INDIANA SYMPHONY ORCHESTRA DELIGHTS THE AUDIENCE DURING THE SYMPHONY ON THE LAWN CONCERT IN JULY.

CROWN POINT COMMUNITY FOUNDATION **CONNECTS THE COMMUNITY**

2023 saw the continuation of three of the Crown Point Community Foundation's most popular community events.

Volunteer Fair & Blood Drive

The 14th annual Volunteer Fair & Blood Drive was a chance to match potential volunteers with more than 50 nonprofits from throughout Lake County. The CPCF also awarded five grants for \$1,000 each to randomly-selected participating organizations.

Symphony on the Lawn

The CPCF is proud to co-sponsor the annual Symphony on the Lawn each summer, a tradition that attracts over 4,000 residents of all ages. Conductor Kirk Muspratt and the Northwest Indiana Symphony presented a captivating concert at the campus of Saint Anthony Majestic Care in Crown Point.

"We are thrilled to support the performing arts by providing this free

event to the community, and showcase the amazing talent of our local musicians," said Mary Nielsen, Crown Point Community Foundation President.

Women's Giving Circle

The ladies granted \$8,000 at the annual Women's Giving Circle (WGC) Collective Grantmaking Event held at the East Point Venue. \$2,000 was awarded to each charity receiving the most votes. In addition, \$2,500 was awarded for a 2024 Women's Giving Circle Scholarship. The WGC is open to all women from the area by making a donation of \$100 or more. Attendees' donations are then pooled and awarded to area nonprofits.

All WGC attendees vote for the nonprofits of their choice at the organization's annual event, which is held on the second Tuesday in September.



PHOTOS FROM LEFT TO RIGHT: ONE OF THE CONTEST WINNERS FOR COLLECTING THE MOST CARDS, ELISE CIMAROLLI, CELEBRATES WITH HER MOM AND POLICE OFFICERS. FROM LEFT: CORPORAL STEVE MEECE, PATROL OFFICER/SRO LESLIE MALERICH, ELISE CIMAROLLI AND HER MOM, DETECTIVE SERGEANT RYAN OLSON, ASSISTANT CHIEF OF POLICE JAMES T. JANDA, AND CORPORAL MICHAEL F. O'CONNOR / PATROL OFFICER JOSEPH OSIECKI HANDS OUT HIS TRADING CARDS AT EVENT.



With your help, Crown Point police officers have a new way to connect with the community.

A CPCF grant for \$6,000 was rewarded to the Crown Point Police Department for its youth advocacy Trading Card program.

Beyond its responsibilities in the community, the Crown Point Police Department serves as School Resource Officers (SROs) in Crown Point's schools. An additional officer is assigned during the school year as the DARE officer whose focus is teaching Crown Point students about the dangers of drug use and the negative effects of bullying.

Children in our local area face bullying at schools, in their neighborhoods, and on the internet. These students have limited role models to go to when these situations arise. The phrase, "not all heroes wear capes" resonates in today's society. Police officers can effectively use their public persona to be a child's advocate. The relationship between police officers and local youth is crucial for

establishing a solid foundation. Trust is a fundamental element in order for police work to be effective. Over the years, police officers have noted that there was more of a wall being formed between children and the officers in their community.

To help combat this problem, the Crown Point Police Department initiated the Trading Card Program. The program consists of baseball type trading cards with Crown Point police officers' photographs on the front and short biography of each officer on the back, as well as a personal message to kids from that officer. The program consists of a Mayor (Commander-in-Chief) card, 50 Crown Point police officer cards, and two General Service Officer cards, including specialty division cards from the K-9 unit, SWAT unit, motorcycle unit, and DARE. The deck also includes a special "flashback" card to represent the department's past.

The police department's intent for the program is to allow children to feel comfortable in seeking out an officer when a parent or guardian isn't available or if they have experienced something that is not right. The



PHOTOS CLOCKWISE FROM LEFT: DARE OFFICER STANKO GLIGIC HANDS OUT HIS TRADING CARDS DURING A TRUNK OR TREAT EVENT AT LEGACY FIELDS AT CENTER ROSS PARK / PATROL OFFICER CEPRIANA MONTELEONE ENJOYS HANDING OUT HER TRADING CARDS AT THE TRUNK OR TREAT EVENT / SERGEANT ROBERT BALLAS DISPLAYS HIS TRADING CARD / CORPORAL RON BUKOWSKI HANDS HIS CARDS TO STUDENTS.

goal is for the youth in the community and the police officers to interact and promote a positive and trusting relationship for years to come.

“The trading card program helps our youngest community members recognize our officers, as well as lets children and families know our officers are friendly, helpful and approachable,” said Ryan S. Patrick, Crown Point Police Department Chief of Police.

Each Crown Point officer has 1,000 cards to pass out to local children. As part of a promotion for the Trading Card program, Crown Point children ages 4 to 12 were invited to participate in the department’s trading card contest, with the goal of collecting all 64 trading cards. The first four participants to collect all 64 cards received prizes ranging from a Nintendo Switch to a gift card.

The program will continue past 2023 into the next several years, as Crown Point police officers are well equipped with trading cards on

hand. Thanks to the Trading Card Program, some officers became celebrities overnight!

For more information on the program, please contact Commander Norm Isaacs at 219-663-2131, ext. 129.

THE POLICE TRADING CARDS HAVE
OPENED THE DOOR FOR LOCAL KIDS
TO GET TO KNOW OUR POLICE
OFFICERS AND HELP GENERATE A
SENSE OF TRUST AND FAMILIARITY.

NORMAN ISAACS
CROWN POINT POLICE DEPARTMENT
OPERATIONS COMMANDER



Unrestricted Endowment Funds for Community Grants

Unrestricted Endowment Funds are created by donors who want to support a broad range of community causes and entrust the CPCF to allocate those funds to causes with the greatest need.

Alex and Ila Magiera Endowment Fund
Art Hill Ford/Lincoln Mercury/Carroll Chevrolet Endowment Fund
Bates Family Unrestricted Endowment Fund
Benjamin T. & Angela J. Ballou Unrestricted Endowment Fund
Bill & Betty Kennedy Family Endowment Fund
BJ & Kay Hubbard Endowment Fund
Bob and Bernice Anderson Endowment Fund
Cedar Lake Community Endowment Fund
Charlie and Marilyn Kaper Unrestricted Endowment Fund
Clayton Dyer Root Endowment Fund
CPCF Community Grantmaking Fund
Corbin Family Unrestricted Endowment Fund
Crown Point Community Foundation Fund
Daniel Reinhardt Root & Carol McInerney Root Unrestricted Endowment Fund
Darryl & Patricia Miller Endowment Fund
David & Helen Batusic Unrestricted Fund
Dean and Barbara White Unrestricted Endowment Fund
Dexter Family Endowment Fund
Dolores E. White Unrestricted Endowment Fund
Don & Alice Burrell Family Endowment Fund
Don and Joyce Carnahan Endowment Fund
Donald and Joyce Huber Family Endowment Fund
Donald and Theresa Cowan Family Fund
Dr. William and Ramona Jean Smead Family Fund
Edward G. and Katherine R. Gerlach Huber Memorial Fund
Edwin and Catherine Huber Family Endowment Fund
First Financial Bank Endowment Fund
Fran and Billie Hoffman Fund
G.W. Gintert Family Fund
Geisen Family Endowment Fund
Gordon and Nina Bates Endowment Fund
Greg and Nancy Forsythe Christian Giving Fund
Heritage Quilters Fund
Hilary and Margaret Raab Fund
Howard Wise Endowment Fund
Jack & Diane Kemp Endowment Fund
Jeff and Linda Bryner Unrestricted Endowment Fund

Jim and Betty McDonald Endowment Fund
Jim and Kim Larsen Unrestricted Endowment Fund
Jimmy & Marian Hooseline Family Trust
Joe and Marian Jollief Unrestricted Endowment
John & Ann Barney Unrestricted Endowment Fund
John & Diane Burrell Family Endowment Fund
John and Maureen Rogers Unrestricted Endowment Fund
John Dockus Unrestricted Endowment Fund
Jon and Cindy Harts Family Endowment Fund
Joseph K. Beckman Unrestricted Endowment Fund
Joseph L. and Maribel C. Costin Family Endowment Fund
Karen & Cornel Raab Unrestricted Endowment Fund
Karl F. Seger Endowment Fund
Letz Family Endowment Fund
Marge and Hugo Breuckman Fund
Marie Van Slyke Bean Endowment Fund
Mary and David Root Endowment Fund
Michael and Sherron Pampalone Endowment Fund
Otto Richard Fifield Memorial Endowment Fund
Peter & Betty Kolodziej Memorial Endowment Fund
Purdue Federal Credit Union Endowment Fund
Richard and Laura Sauerman Unrestricted Endowment Fund
Richard J. and Gwendolyn L. Buehler Endowment Fund
Robert and Joyce Nutt Unrestricted Endowment Fund
Robert W. and Karen J. Lynn Family Endowment Fund (**New Fund**)*
Rouge Family Endowment Fund
Russell C. Westphal Family Memorial Fund
Schroeder Family Fund
Theodore L. and Tennessee E. Sendak Family Endowment Fund
Thomas H. Durant Endowment Fund
Tom and Kathy Liss Unrestricted Endowment Fund
Vern and Jeanne Segert Endowment Fund
Violet and Irvin Guritz Endowment Fund
Wellman Family Endowment Fund
White Family Fund
William and Maxie Scott Endowment Fund
William G. and Phyllis M. Fatch Fund

*No grants in 2023.

UNRESTRICTED ENDOWMENT FUND HIGHLIGHT

Robert W. and Karen J. Lynn Family Endowment Fund

Robert and Karen Lynn have always thought that giving back to their community is an important part of their lives together.

Karen is a native of Hammond and graduated from Valparaiso University. Robert was born in the Bronx and served eight years in the Navy before moving to Northwest Indiana. He has an undergraduate degree from Purdue University and a graduate degree from Indiana Wesleyan University.

After living in Indiana for many years, they left the region and spent 20 years in Omaha, Nebraska and then in the Des Moines, Iowa area as Karen worked for several major corporations in the food, insurance and appliance industries. Community giving was important for them on and off the job. Both held positions as community liaisons and served on various charitable boards. Karen managed charitable foundations for several corporations.

When Karen retired in 2020 (Robert retired in 2000), the couple made the decision to move back to Northwest Indiana to be close to Karen's family. They located in Crown Point.

Once back in Indiana, they began looking for a charitable organization that shared the same values and interest areas, such as education, arts and culture, health and safety.

"The Crown Point Community Foundation checked all the boxes as they have a diverse giving policy, donating to a variety of nonprofits in the Crown Point area and South Lake County as well as having a strong financial health rating with Charity Navigator," Karen said.

The Lynns decided to initiate funding by making a contribution via Robert's required minimum distribution from his IRA. In this way, they are supporting the community and could also receive a tax benefit as well.

"Once we decided to make the donation with a distribution from an IRA, CPCF President Mary Nielsen suggested that we establish our own named unrestricted endowment fund where distributions are combined with distributions from other unrestricted community funds



to support a broad range of interest areas, including those in which we are aligned," Karen said.

WE ENCOURAGE OTHERS TO FOLLOW THIS PATH AS
IT IS A GREAT WAY TO SUPPORT LOCAL NONPROFITS.
PLUS, THIS YEAR WE WERE THRILLED THAT THE
SPECIAL \$2 FOR \$1 MATCHING OPPORTUNITY WHICH
TRIPLIED THE IMPACT OF OUR DONATION.

ROBERT W. AND KAREN J. LYNN
UNRESTRICTED ENDOWMENT FUND DONORS

Community Grants Awarded

\$510,683

Distributions from the Unrestricted Endowment Funds provide grants to nonprofit organizations within the following categories to address the broad needs in the community.

Animal Related - \$18,500

Feline Community Network Inc.
Humane Indiana, Inc.
The Humane Society of Hobart, Inc.

Arts, Culture - \$24,650

Cedar Lake Historical Association
City of Crown Point
Lake County Historical Society Museum
Northwest Indiana Symphony Society, Inc.
South Shore Arts, Inc.

Community Improvement - \$7,640

Northwestern Indiana Regional Planning Commission
Old Sheriff's House Foundation

Economic Development - \$8,600

Indiana Plan for Equal Employment, Inc.

Education - \$30,660

Challenger Learning Center of Northwest Indiana, Inc.
Chasing Dreams
Crown Point Community Library
Crown Point High School - AP Test Funding
Crown Point High School - Vex Robotics Underdogs 1233
Franciscan Health Foundation
Junior Achievement of Chicago

Food, Nutrition, Agriculture - \$65,500

Community Help Network, Inc.
Food Bank of Northwest Indiana
Meals on Wheels of Northwest Indiana, Inc.
Pack Away Hunger
St. Vincent DePaul Society
TradeWinds Services, Inc.

Health - \$57,713

Crown Point Bulldogs Touchdown Club
Franciscan Health Foundation - Northern Indiana
Hanover Jr. Wildcats Football, Inc.
Jacob's Ladder Pediatric Rehab
MAAC Foundation Inc.
Make-A-Wish Ohio, Kentucky & Indiana
Northwest Indiana Cancer Kids Foundation, Inc.

Housing, Shelter - \$20,000

SAFE Coalition for Human Rights, NFP

Human Services - \$109,571

American Veterans Collection Inc.
Best Buddies Indiana
Chicagoland Immigrant Welcome Network
Community Cancer Research Foundation, Inc.
Crown Point Rotary
Dunes Dog Training Club, Inc. / Pets N Vets Program
Exceptional Equestrians Unlimited
Franciscan Alliance-Volunteer for Seniors and Incapacitated Adults
Golden Hope Ministries Inc.
Hanover Community School Corporation
Hearts in Motion
Kelly's Kindness Company
Love Moves Us, Inc.
Mental Health America of Lake County
Mommy's Haven
Northwest Indiana Cancer Kids Foundation, Inc.
Open Hearts Therapeutic Riding Center Inc.
Power Paws for Kids, Inc. AAT
Salvation Army
South Lake County Agricultural Historical Society Inc.
St. Jude House, Inc.
Veteran Impact Services, Inc. dba Operation Charlie Bravo
Visiting Nurse Assn. of Porter County, Inc.
White's Residential & Family Services

Community Grants continued:

Public Safety - \$23,100

Cedar Lake Police Department
Crown Point Police Department
Lake County Fire Chiefs Association, Inc.
Town of Lowell

Recreation - \$109,600

Crossroads YMCA - Southlake/Griffith/Hammond/Whiting Branches
Dean & Barbara White Southlake YMCA
First United Methodist Church of Lowell, Inc.
Hanover Central Wildcat Pride Gridiron Club

Religion Related - \$5,000

First Presbyterian Church of Crown Point

Youth Development - \$30,149

Boys and Girls Clubs of Greater Northwest Indiana
Exceptional Equestrians Unlimited
Girl Scouts of Greater Chicago and Northwest Indiana
Girls on the Run Northwest Indiana
Lakeshore Public Media
Opportunity Enterprises, Inc.
Youth for Christ of NWI

Field of Interest Funds Grants Awarded

\$5,433

Field of Interest Funds allow donors to address an area they care deeply about without naming a specific charity. The foundation grant committee awards grants to nonprofits that fit the donor's category of interest.

Community Literacy Endowment Fund
Help The Children Fund*
Peg Shaffer Instrumental Arts Fund*
The Manis Family Fund

*No grants in 2023.

THE GREATNESS OF A COMMUNITY IS
MOST ACCURATELY MEASURED BY THE
COMPASSIONATE ACTIONS OF ITS MEMBERS.

CORETTA SCOTT KING
AMERICAN AUTHOR

Scholarship Funds Grants Awarded

\$439,047

Scholarship Funds are created by donors to invest in students' futures. Some scholarships help students from a particular high school or area; others provide financial assistance to those pursuing a specific field of study; still others assist students most in need. Donors are able to set the criteria for applicants.

Alec Matalin Memorial "Dope" Endowed Scholarship Fund
Alfred J. Gruber Senior Social Studies Honorarium Fund
Alvin & Kathryn Schmidt Endowment Fund
American Italian Benevolent Society Endowment Scholarship Fund
Barbara Jenkins Tyler Speech Scholarship Endowment Fund
Barney Family Scholarship Fund
Bryan C. Niedert Memorial Scholarship Fund **(New Fund)***
Burrell Family Scholarship Endowment Fund
Caleel Foundation Scholarship Fund
Candace Lynne Walton Scholarship Endowment Fund
Charles M. & Marjorie Quickle Memorial Scholarship
Christopher Day Memorial Scholarship Fund*
Clayton Gaudry Memorial Scholarship Fund
Colonel John Wheeler Middle School Endowment Fund
Crown Point Community Foundation Scholarship Fund
Crown Point Lion's Club Scholarship Fund
Crown Point Swim Club Alumni Scholarship Fund
Crown Point Youth Baseball Scholarship Endowment Fund
David Gergely Memorial Scholarship Endowment Fund*
Dean and Barbara White Scholarship
Dockus Charitable Scholarship Endowment Fund
Donald and Phyllis (Dillabaugh) Ross Purdue Scholarship Endowment Fund
Dorothy Dillman Max Scholarship Fund
Dr. J. Robert Mayden Memorial Scholarship Fund **(New Fund)***
Dr. James W. Gentleman Memorial Scholarship Fund
Dwight D. Eisenhower Elementary PTO Scholarship
George Letz III Memorial Scholarship Fund
Gil and Gail Stiener Family Fund
Helen Zielinski & Ray Stuck Family Scholarship Fund
Isabelle Melchor Memorial Scholarship Fund
Jerry A. Caravana Athletic Director Endowment Scholarship Fund
JoAnne and Jim Haag Scholarship Fund
John C. Moos Memorial Scholarship Fund
John D. Amodeo Scholarship Fund
Joseph & Evelyn Skora Memorial Scholarship Fund*

Joseph N. and Annette M. Allegretti Fund
Karen & Cornel Raab Scholarship Fund
Karen Pruzin Scholarship Endowment Fund
Kathy, Russ, and Jim Keller Endowment Fund
Kay Hubbard Music Scholarship Award Fund
L. Jane Keene Memorial Scholarship Fund
Lake Street Elementary PTO Scholarship Fund
Law Enforcement Academy Fund*
Lisa Schaefer Stover Endowment Fund
Liss Carstar Scholarship Fund
MacArthur Elementary PTO Scholarship Fund
Manhart/Gibbons Family Memorial Endowment Fund
Marie Van Slyke Scholarship Fund*
Marilee Thanholdt Memorial Fund
Marion Kellum Performing Arts Scholarship Fund*
Mark and Lindsay Bates Scholarship Fund
Mark Edwards Scholarship Fund
Marty Shahbaz Football Scholarship Endowment Fund
Maurine M. Schlemmer Memorial Scholarship Fund*
McMichael Family Endowment Fund
Mike Brown Jr. Memorial Scholarship Endowment Fund
Millicent & Forrest Everett Memorial Fund
Paul D. & Dorothea Everett Fund
Pete Breuckman Sr. Tradesman Scholarship Fund
Pettit Family Memorial Student Athlete Scholarship Fund
Ralph E. and Dee Bennett Scholarship Endowment Fund
Robert "Bob" Brown Scholarship Endowment Fund
Robert Taft Middle School PTO Scholarship Fund
Ronald & Suzanne Borto Scholarship Endowment Fund
Russ Keller Family Scholarship Fund
Shirley Mudy Scholarship Fund*
Solon Robinson Elementary School PTO Scholarship Fund
St. Mary's Catholic Community School Scholarship
The LaMere Family Endowment Fund
Tim Galusha Memorial Scholarship Fund

*No grants in 2023.

Scholarship Funds Grants Awarded continued:

- Timothy Ball Elementary PTO Scholarship Fund
- Timothy J. Grzych Memorial Scholarship Fund *(New Fund)**
- "Tiny" Knesek Bohling and Karla Stiener Scholarship Endowment Fund
- Todd Szanyi Memorial Scholarship Endowment Fund
- Trinity Lutheran School Scholarship Fund
- Virgil A. Place Scholarship Fund
- Walter J. Bernacki Memorial Scholarship Fund
- Wilbert Buth Music Scholarship Fund
- William G. & Phyllis M. Fatch Scholarship Fund
- Winfield/Jerry Ross Elementary PTO Scholarship Fund
- Youche Country Club Scholarship Endowment Fund
- Zondor Family Scholarship Endowment Fund



<

I AM INCREDIBLY BLESSED TO HAVE WON THE DEAN AND BARBARA WHITE SCHOLARSHIP. I CAN NOT BEGIN TO EXPRESS MY GRATITUDE, I WILL FOREVER BE THANKFUL FOR HAVING WON AND BEING CONSIDERED FOR THIS SCHOLARSHIP. IT HAS CHANGED MY LIFE FOR THE BETTER. I HAVE BEEN SET UP FOR SUCCESS AND WILL DO EVERYTHING IN MY POWER TO BECOME THE BEST VERSION OF MYSELF WITH THE HELP OF THIS SCHOLARSHIP.

ALYSSA REMENIUS
DEAN AND BARBARA WHITE SCHOLARSHIP RECIPIENT

>

THE DEAN AND BARBARA WHITE SCHOLARSHIP WILL HELP ME IN MANY WAYS. I PLAN ON USING THIS SCHOLARSHIP TO NOT ONLY HELP ME WITH THE COSTS ASSOCIATED WITH COLLEGE, BUT ALSO THE STUDY ABROAD PROGRAM. WITH THIS SCHOLARSHIP, I NOW HAVE THE POTENTIAL TO TRY THESE NEW ACTIVITIES AND I AM EXTREMELY EXCITED TO SEE WHAT ADVENTURES LIE AHEAD.

JACOB NEFF
DEAN AND BARBARA WHITE SCHOLARSHIP RECIPIENT



^

IT MEANT A LOT TO ME TO PLAY BASEBALL REPRESENTING MY HOMETOWN AND CP CAL RIPKEN AND TO BE AWARDED THIS SCHOLARSHIP. THE SKILLS AND EXPERIENCES I GAINED DURING THE CP CAL RIPKEN YEARS WERE VALUABLE TO MY DEVELOPMENT AS A HIGH SCHOOL ATHLETE AND STUDENT.

CONNOR COTTON
CROWN POINT YOUTH BASEBALL SCHOLARSHIP RECIPIENT




<

RECEIVING THESE SCHOLARSHIPS HAS HELPED ME TO SHOW MY CHILDREN AND MY COMMUNITY THAT GOING BACK TO SCHOOL AND FURTHERING YOUR CAREER, IS NEVER UNATTAINABLE AT ANY AGE. IT SOLIDIFIES MY CHOICES AND PROVES THAT EVERYTHING HAPPENS FOR A REASON.

JESSICA BAKER
DOROTHY DILLMAN MAX SCHOLARSHIP RECIPIENT
AND TRI KAPPA SCHOLARSHIP RECIPIENT

**No grants in 2023.*

 Designated Grants Awarded

\$237,777

Designated Funds are established by donors to benefit specific charitable organizations and purposes. Donors can identify an eligible charity to benefit.

Aameer Sahi Memorial Fund

Supports: Forest Ridge Academy, scholarship program.

Anthony Kinkade Foundation

Supports: St. Mary Catholic Community School, math and reading programs.

Beth S. Buoscio Endowment Fund

Supports: Timothy Ball Elementary School Art Department.

Betty Biegel Endowment Fund

Supports: St. Mary Catholic Community School, tuition assistance program.

Bieker Family Endowment Fund

Supports: 50% St. Mary Catholic Community School and 50% Community Grant making Fund which supports a broad range of community needs and causes.

Bill and Norma Rosenbower Courthouse Endowment Fund

Supports: Lake Courthouse Foundation.

Bob and Pat Turner Library Fund

Supports: Crown Point Community Library.

Charles and Mable Wise Swisher Courthouse Endowment Fund

Supports: Lake Courthouse Foundation.

Charles and Virginia Isley Endowment Fund

Supports: Crown Point Community School Corporation.

Chuck and Helen Sauerman Endowment Fund

Supports: Trinity Evangelical Lutheran Church.

Crown Point Aid & Relief Fund*

Supports: Financial assistance in emergency situations.

Dan & Vicky Klein Endowment Fund

Supports: Lake Courthouse Foundation.

David and Maria Hibbs Endowment Fund

Supports: Forest Ridge Academy.

Don and Joyce Gertz Endowment Fund

Supports: St. Mary Catholic Community School, tuition assistance program.

Don Hess Memorial Endowment Fund

Supports: Franciscan Alliance, Inc. Crown Point EMS Academy.

Dr. James M. and Mrs. Kathleen M. Rajchel Endowment Fund

Supports: St. Michael the Archangel National Catholic Church.

Dr. Jerry and Trish Allee Fund

Supports: Crown Point High School, Latin Club.

Dr. John P. and Helen M. Birdzell Community Fund

Supports on a rotating basis: Crown Point Fire Department; Meals on Wheels of Northwest Indiana, Inc.; Crown Point Community Library; Rotary Club of Crown Point; Crown Point High School Student Activities; First Presbyterian Church of Crown Point; Crown Point Babe Ruth Baseball League; St. Jude House, Inc.; Tri Kappa Sorority (Kappa Kappa Kappa, Inc., Gamma Theta Chapter); Crown Point Garden Club; and the Crown Point Police Department.

Edith Reinhardt Root Endowment Fund

Supports: Northwest Indiana Symphony Society, Inc.

Edna Mae Buckley & Merritt Buckley Old Courthouse Memorial Fund

Supports: Lake Courthouse Foundation.

George and Laura Wild Endowment Fund

Supports: Crown Point Community Library.

Hanover Schools Education Foundation Endowment Fund

Supports: Hanover Schools Education Foundation.

**No grants in 2023.*

Designated Grants Awarded continued:

Home Lumber Endowment

Supports: Mental Health America of Lake County Crown Point Parents as Teacher Program.

Ivy Tech Community College Foundations of East Chicago De La Garza Campus in East Chicago Endowment Fund

Supports: Ivy Tech Foundation, East Chicago De La Garza Campus in East Chicago.

James and Mary Ann Greiner Courthouse Endowment Fund

Supports: Lake Courthouse Foundation.

James and Sandra Niermeyer Family Endowment Fund

Supports: St. Mary's Catholic Church, needs for Church or School.

Jerry & Phyllis Keough Family Endowment Fund

Supports: Meals on Wheels of Northwest Indiana, Inc.

Jim and Marge Forsythe Courthouse Fund

Supports: Lake Courthouse Foundation.

Jimmy D. & Marian S. Hooseline

Supports: Salem United Methodist Church.

John & Catherine Peterman Endowment Fund

Supports: Northwest Indiana Special Education Cooperative.

John and Ann Barney Family Foundation Courthouse Endowment Fund

Supports: Lake Courthouse Foundation.

John and Maureen Rogers Fund

Supports: In-Pact, Inc. and Lake County Animal Adoption and Control Center.

John Cain Honorarium Arts Endowment Fund (New Fund)*

Supports: South Short Arts (for an annual named prize in honor of John Cain and financial support of the Salon Show exhibition of South Shore Arts).

Joshua Prunsky Memorial Endowment Fund

Supports on a rotating basis: Babe Ruth Baseball; Crown Point Junior Football; and Crown Point Little League Baseball.

June and Bernard Carstens Courthouse Endowment Fund

Supports: Lake Courthouse Foundation.

Kathleen Gleason Leurck Fund

Supports: The Crown Point Community Foundation Operating Endowment Fund.

Kegan Hall Memorial Scholarship Fund

Supports: Forest Ridge Academy, Scholarship in Memory of Kegan Hall.

Lake County World Wars Veterans Memorial Endowment Fund

Supports: Friends of the Veterans Memorial Parkway, Inc.

Manhart/Gibbons Family Memorial Endowment Fund

Supports: 50% to Northwest Indiana Symphony; 25% for scholarships to graduating high school students in the area of music; and 25% Community Grant making Fund which supports a broad range of community needs and causes.

Margarete B. and William H. Fifield Endowment Fund

Supports: Franciscan Health, Crown Point; Lake County Parks Department; and Crown Point Community Library.

Marilou Crisman Memorial Endowment Fund

Supports: Logansport Art Association, Inc.

Mary Govert Fund

Supports: Bethel Church for aid with aiding and assisting victims of domestic violence who reside, with small children within service area of CPCF, pay for rent and utilities for up to one year, renewable from year to year.

Norma N. Rosenbower Memorial Giving Fund

Supports: Alzheimer's Association of Greater Indiana; American Cancer Society of Northwest Indiana; American Red Cross of Northwest Indiana; Amvets - NWI Post, Cedar Lake; First United Methodist Church of Crown Point; First United Methodist Church, annual birthday luncheon; Food Bank of Northwest Indiana; Franciscan Health Foundation Northern Indiana; Habitat for Humanity of Northwest Indiana; Meals on Wheels of Northwest Indiana, Inc.; Mercy Home for Boys and Girls; National Foundation for Cancer Research; Northwest Indiana Symphony Society, Inc.; Pink Ribbon Society; Shirley Ryan Ability Lab (Rehab Institute of Chicago); St. Jude Children's Research Hospital; and Women's Giving Circle.

**No grants in 2023.*

Designated Grants Awarded continued:

Patrick and Daniel Doherty Fund

Supports: Cedar Lake United Methodist Food Pantry; Center Township Trustee, First Presbyterian Church of Crown Point; Food Bank of Northwest Indiana; Hobart Food Pantry; and Ross Township Food Pantry.

Peter and Mary Kucia Memorial Fund

Supports: St. Mary Catholic Community School, tuition assistance program.

Richard (Dick) & Myrene Gordon Fund

Supports on a rotating basis: Crown Point High School English Department and Northwest Indiana Special Education Cooperative.

Robert and Joyce Nutt Endowment Fund

Supports: Meals on Wheels of Northwest Indiana, Inc.

Ron and Diane Hall Endowment Fund

Supports on a rotational basis: Funds for each school in the Crown Point Community School Corporation.

Roselyn Trimble Family Endowment Fund

Supports: Paladin Inc/The Arc Northwest Indiana; St. Jude House, Inc.; St. Mary's Catholic Church of Crown Point Food Pantry; St. Matthias Food Pantry; First Presbyterian Church Food Pantry; Holy Spirit St. Vincent DePaul Food Pantry; and St. Clare Clinic Food Pantry.

Schererville Parks Foundation Inc. Fund

Supports: Schererville Parks and Recreations Department.

Sharon James Endowment Fund

Supports: St. Jude House, Inc.

Stanley B. Lee Fund

Supports: Bethel Church, Benevolent Ministry - Aid and assist victims of domestic violence who reside with small children within service area of CPCF, pay for rent and utilities for up to one year, renewable from year to year.

Superior Petroleum Products Inc. Courthouse Endowment Fund

Supports: Lake Courthouse Foundation.

The Honor Endowment Fund

Supports: CPEMA Association, Inc.

Tom and Kathy Liss Courthouse Endowment Fund

Supports: Lake Courthouse Foundation.

Trinity Lutheran Church-Lowell Fund

Supports: Trinity Lutheran Church, Lowell.

Vada Pinter Endowment Fund

Supports: Crown Point Community Library; Crown Point Fire Department; and Crown Point Police Department.

Visiting Nurse Foundation Fund

Supports: Meals on Wheels of Northwest Indiana, Inc., Haven House, Inc.; Lupus Foundation of America, Indiana Chapter; Centers for Possibilities; Franciscan Communities; and Sojourner Truth House.

Wilbert & Betty Buth Endowment Fund

Supports: Trinity Evangelical Lutheran Church, Trinity Cares program.

William and Mary Carroll Fund

Supports: Crown Point Police Department; Crown Point Fire Department; Crown Point Community Library; St. Matthias Church; and Franciscan St. Anthony Health, Crown Point.

Supports on a rotating basis: Crown Point Cal Ripken Youth Baseball; Crown Point Junior Bulldogs/Panthers; Crown Point Girls Softball League; and Crown Point Pups Basketball.

William C. and Jean Keehn Endowment Fund

Supports: First Presbyterian Church of Crown Point; Lake Courthouse Foundation; and the Crown Point Community Foundation Operating Endowment Fund.



PHOTOS CLOCKWISE FROM LEFT: VOLUNTEERS HELP NEIGHBORS IN NEED / VOLUNTEERS PREPARE BOXES OF FOOD FOR DELIVERY DAY / VOLUNTEERS RESTOCK THE FOOD PANTRY SHELVES / NEIGHBORS IN NEED GET THE FOOD ITEMS THEY NEED / VOLUNTEER TAKES CARE OF THE NEWLY PLANTED VEGETABLE GARDEN.

With your help, families with food insecurities were given needed support.

A Crown Point Community Grant for \$7,500 was awarded to the Society of St. Vincent de Paul conference at Holy Spirit Church in Winfield.

The mission of the Winfield chapter is to provide much needed food items to the community. The Society of St. Vincent de Paul Holy Spirit food pantry is open Monday, Tuesday and Thursday from 10:00 a.m. to 1:00 p.m. The Society also helps financially with rent and utility needs. The conference planted a vegetable garden in 2021 and in 2022 began to distribute fresh vegetables to the community.

"We serve all food insecure neighbors of Northwest Indiana," said Jeff Bandura, Food Pantry Coordinator. "We have no geographic restrictions to who we serve, and distribute food items to anyone who visits our pantry."

The food pantry remained open during the COVID pandemic but

is dealing with several challenges.

"Rising food costs continue to hamper our efforts," Bandura said. "We need to keep the food pantry well stocked with the necessary food items. A majority of our visitors have fallen on hard times and have problems making ends meet. They rely on us for these food items."

The CPCF grant went towards supporting the food pantry. For more information, please visit: www.societyofstvincentdepauldistri.com.



THE PANTRY MEANS A LOT TO ME. THE FUNDS THAT I USED TO HAVE I DON'T HAVE ANY MORE NOW THAT I'M RETIRED. THE PANTRY PROVIDES THE SUSTENANCE I NEED TO GET THROUGH THE MONTH. THE STAFF IS VERY FRIENDLY AND TRIES TO HELP WITH OTHER NEEDS IF THEY CAN.

CYNTHIA F.

NEIGHBOR IN NEED AT THE HOLY SPIRIT CHURCH
SOCIETY OF ST. VINCENT DE PAUL FOOD PANTRY

Donor Advised Funds Awarded

\$80,436

Donor Advised Funds allow the donor to make recommendations for their charitable choices. Each year the Foundation notifies the donor of their available distribution amount. The donor then recommends one or more eligible charities to receive the grant distributions.

Alan Jon "AJ" Roach Jr. Memorial Fund
Alec Matalin Memorial Endowment Fund
Angela M. Fealy Family Fund
Beverly M. Huber Endowment Fund
Bill and Norma Rosenbower Endowment Fund
Billy and Phyllis Walker Endowment Fund
Borto Family Fund
Brandon Aaron Huseman Memorial Endowment Fund*
Carole and Jack Esala Endowment Fund
Charlie Scott Memorial Fund
Cindy and Ed Hall Endowment Fund
Corey & Charlotte Liss Family Endowment Fund*
Cornel and Karen Raab Donor Advised Endowment Fund
Crown Brick and Supply Endowment Fund
Crown Point Rotary Foundation Fund
Cuculich Family Endowment Fund*
Dale and Terri Williams Family Endowment
Devitte Family Fund*
Dominic and Nancy Vicari Family Fund*
Dr. Frederick and Mary J. Klepsch Family Fund*
Edward A. and Clara R. Bapple Cedar Lake Endowment Fund
Eksten Family Endowment Fund*
Greg and Linda Armstrong Family Endowment Fund
Harold L. and Martha Wheeler Family Endowment Fund
Helen Zielinski and Ray Stuck Family Endowment Fund
Hub Bootery Fund
James & Irene Gentleman Family Endowment Fund
Jo Schweitzer Family Fund
JoAnne and Jim Haag Endowment Fund
John Tubbs Family Endowment Fund
Johnston Family Endowment Fund
Joseph and Jane Nerney Fund
Joseph P. & Ruth B. Schramm Endowment Fund
Joshua and Melissa Sickinger Endowment Fund*
Kathleen and John Roeser Endowment Fund*

Keith & Mary Nielsen Family Endowment Fund
Klebs-Sickinger Family Fund
Kristin M. Harts Endowment Fund*
Larry and Kimberly Geisen Endowment Fund
Marge & Melissa Kerr Endowment Fund
Marjorie Swallow Memorial Endowment Fund
Michael & Diane O'Brien Family Endowment Fund (**New Fund**)*
Patricia A. Huber Endowment Fund
Peter "Big Pete" and Lois Briggs Memorial Fund
Peterman Family Fund
R. F. Bieker Foundation
Richard and Laura Sauerman Endowment Fund
Robert and Peggy Ligda Endowment Fund
Roger & Donna Pace Family Endowment Fund*
Ronald and Anna May Allee Endowment Fund*
Ryan William Lepak Memorial Fund*
Susan Driscoll Elder & Thomas A. Elder Fund
Ted and Lin Zapinski Endowment Fund
The Barney Fund
The Brigham Family Fund
Thomas and Faye Platt Family Endowment Fund
Tim & Cynthia Walsh Endowment Fund
Vieweg Family Endowment Fund*
Wayne A. Gruber Horticulture Fund
Women's Giving Circle Fund

*No grants in 2023.

Agency Funds Awarded

\$211,283

Agency Endowment Funds are created by nonprofit organizations. Each year, distributions from the agency fund help support the operational and program needs of the nonprofit organization or are invested back into the fund for continued growth.

Campagna Academy Endowment Fund
Cedar Lake Historical Association Endowment*
Challenger Learning Center of Northwest IN Inc. Endowment Fund
Crossroads YMCA
Crown Point Community Library Endowment Fund
Crown Point Community Schools Endowment Fund
First Presbyterian Church Endowment Fund
First United Methodist Church of Crown Point Endowment
Forest Ridge Academy Endowment Fund
Franciscan Sisters of Chicago Service Corporation Fund
Good Samaritan Endowment Fund
Habitat for Humanity of Northwest Indiana Endowment Fund*
Indiana Ballet Theatre NW, Inc. *
John Kern Fund*
Lake Court House Foundation Endowment Fund
Lake Region Christian Assembly Endowment Fund*
Masonic Temple Association Endowment*
Meals on Wheels of NW Indiana Endowment Fund
Northwest Indiana Special Education Coop Endowment Fund
Northwestern Indiana Nursery and Landscaping Endowment Fund

Oktober Committee Museum Endowment Fund*
Old Sheriff's House Gladys Harmack Forgey Endowment Fund
Shrine of Christ's Passion Endowment Fund
Solon Robinson PTO Endowment Fund
South Shore Arts Endowment Fund
Southlake YMCA Endowment Fund
St. Anthony Medical Center Fund
St. Jude House Endowment Fund
St. Mary Catholic Community School Endowment Fund
The Arc Northwest Indiana
The Women's Center of Northwest Indiana Endowment Fund
Tri Kappa, Gamma Theta Chapter Endowment Fund
Tri-Creek Education Foundation Fund
Trinity Evangelical Lutheran Church Fund
University of St. Francis, Crown Point Endowment Fund
White's Residential and Family Services
Winfield Community Foundation, Inc. Endowment Fund
Wittenberg Lutheran Village Endowment Fund

*No grants in 2023.





LILLY ENDOWMENT INC. GIFT VIII

MATCHING FUND GRANTS HELP DONATIONS GO EVEN FURTHER

In October 2023, Lilly Endowment Inc. launched the eighth phase of its Giving Indiana Funds for Tomorrow (GIFT) initiative, allocating up to \$210 million to help Indiana community foundations in their efforts to: 1) grow financial resources to provide long-term viability and sustainability; 2) further strengthen their leadership capabilities; and 3) develop and implement strategic programs, projects and initiatives that enhance their communities' quality of life.

As part of this multifaceted initiative, Lilly Endowment announced \$135.3 million in Matching Fund Grants that will enable community foundations to develop unrestricted assets, implement projects and programs that address community needs, and build their internal capacity.

The Crown Point Community Foundation was awarded **\$1,875,000** in Matching Fund Grants, announcing four Matching Challenge Opportunities to help bolster its work. These opportunities align with the Board's long-term vision and commitment to not only meet but anticipate the evolution of needs and aspirations in South Lake County through a diverse array of impactful programs and initiatives.

The following are the four matching opportunities available that prioritize immediate community needs while also investing in long-term

sustainability and capacity building, both for the CPCF and the local nonprofit sector.

CPCF Community Grantmaking Fund or any unrestricted fund

\$2 for \$1 Match Opportunity! - \$1,500,000 in available funds

Operating Fund - General CPCF Fund

\$1 for \$1 Match Opportunity! - \$187,500 in available funds

CPCF Nonprofit Capacity Building Programs

\$1 for \$1 Match Opportunity! - \$147,500 in available funds

Symphony on the Lawn Project Fund

\$1 for \$1 Match Opportunity! - \$40,000 in available funds

"We are incredibly excited to be part of the next phase of the GIFT initiative," said Mary Nielsen, CPCF President. "And now, thanks to Lilly Endowment's Matching Fund Grants, your generous donations can go even further."

The Match Timeline is October 1, 2023 - December 31, 2025 or until the funding has been expended.



PHOTOS CLOCKWISE FROM LEFT: A SALVATION ARMY VOLUNTEER HELPS IN THE FOOD PANTRY / A VOLUNTEER GIVES A HELPING HAND WITH FOOD PANTRY DELIVERY TO VEHICLES / SOCIAL WORKER LUPITA CARDOZA IS ASSISTING A CEDAR LAKE COMMUNITY MEMBER WITH A UTILITY PAYMENT / A NEIGHBOR IN NEED SIGNS IN AT THE REGISTRATION DESK.

With your help, residents in two more South Lake County towns are receiving relief from their financial challenges.

A CPCF grant for \$7,500 was awarded to the Salvation Army in Munster.

The Salvation Army is an international movement whose message is based on the Bible. Its ministry is motivated by the love of God. Its mission is to preach the Gospel of Jesus Christ and to meet human needs in His name without discrimination.

The Munster/Hammond chapter assists neighbors in need with food, housing and utility assistance. They also offer community enrichment services including weekly women's, men's and youth meetings, regular Bible studies and Sunday morning worship services.

Thanks to the grant from the Crown Point Community Foundation, the Salvation Army was able to add the towns of Lowell and Cedar Lake to its service area.

"This project impacts all residents of Lowell and Cedar Lake who are facing financial insecurity," said Salvation Army Lieutenant Darby Bowyer. "This includes one grocery order every 30 days and up to 3 months of emergency rental or utility assistance once every 12 months per household, Christmas gifts and food for holidays and back to school supplies for students who are in need."

For more information, please visit:
centralusa.salvationarmy.org/hammond/.



HAMMOND/MUNSTER

WE ARE GRATEFUL FOR THE VITAL FUNDING FROM THE CROWN POINT COMMUNITY FOUNDATION, WHICH ALLOWS THE SALVATION ARMY TO REACH MORE OF OUR NEIGHBORS WHO ARE IN NEED. WE COULDN'T HAVE ACCOMPLISHED THIS EFFORT WITHOUT THIS GENEROUS CONTRIBUTION FROM THE CPCF.

MAJOR STEVEN KOEHLER

EXECUTIVE DIRECTOR OF THE SALVATION ARMY
HAMMOND-MUNSTER

Operating Sustainability Funds

\$124,415

It is the mission of the CPCF to enable donors to give back to our community by establishing various types of funds. We offer these services through a small but efficient staff and a business plan that maximizes efficiencies while reducing cost. Operating Sustainability Funds support the day-to-day operations of the CPCF.

Ann & John Barney Operating Endowment Fund
Beckman Family Operating Endowment Fund
Bruce & Betty Fleming Operating Endowment Fund
Carsten and Georgia Falkenberg Operating Endowment Fund
Centier Bank Operating Endowment Fund
Charles W. and Mable Wise Swisher Operating Endowment Fund
Chase Operating Endowment Fund
Circle Restaurant Operating Endowment Fund
City of Crown Point Operating Endowment Fund
Cornel and Karen Raab Operating Endowment Fund
Darryl & Patricia Miller Operating Endowment
David & Helen Batusic Operating Endowment Fund
Ed and Leona Luke Operating Endowment Fund
Gil and Gail Stiener Operating Endowment
Greg and Nancy Forsythe Operating Endowment Fund
Harold L. and Martha Wheeler Operating Endowment Fund
Harris N.A. Operating Endowment Fund
Hooseline Family Operating Endowment Fund
John and Cathy Peterman Operating Endowment Fund

Joseph and Jane Nerney Operating Endowment Fund
Joseph N. and Annette M. Allegretti Operating Endowment Fund
Kathleen and Anthony Zdanowicz Operating Endowment Fund
Ken and Helen McEntire Family Operating Endowment Fund
Ken Homeier Family Fund
Lake Court House Foundation, Inc. Operating Endowment Fund
Marge Brady Kerr, in memory of JW Kerr, Jr. Operating Endowment Fund
Matt and Sandy Bapple Operating Endowment Fund
Mike & Karen Dexter Operating Endowment Fund
Operating Endowment Fund-Crown Point Community Foundation
Paul Martin Leurck Fund
Ray and Bernice Liss Family Operating Endowment Fund
Richard and Josephine Schweitzer Family Fund
Ronald W. & Suzanne M. Borto and Family Operating Endowment Fund
Southlake YMCA Operating Endowment Fund
St. Anthony Medical Center Operating Endowment Fund
Virginia and A.D. Luers Operating Endowment Fund
White Family Operating Endowment Fund
William Bixenman Operating Endowment Fund

WAYS TO GIVE FOR TODAY AND TOMORROW

1. **Cash** - Cash donations can be made by mail, dropping off at our office, or online.
2. **Stocks or Securities** - The Foundation has the ability to accept gifts of publicly traded stocks.
3. **IRA Distributions** - Qualified Charitable Distributions can be made directly to the Foundation from your IRA custodian, reducing taxable income (*Distributions cannot be directed to a Donor Advised Fund*).
4. **Wills and Bequests** - Talk with your attorney and name the Crown Point Community Foundation as a beneficiary of all or a portion of your estate. Please use the following wording - "I give or bequeath to the Crown Point Community Foundation, 115 S. Court St., Crown Point, Indiana % or the sum of \$ of my residuary estate."
5. **Life Insurance** - You can designate all or a portion of your life insurance policies, potentially saving Indiana inheritance tax and federal estate taxes.

OPERATING SUSTAINABILITY FUND HIGHLIGHT

Joseph and Jane Nerney Operating Endowment Fund



Active in the community, Joe was a member and past president of the St. Mary Home and School, Crown Point Rotary, Crown Point Sesquicentennial, and St. Anthony Community Council. Joe served on the Centier Bank Board of Directors from 1983 until 2002. Joe was an active member of St. Mary Catholic Church in Crown Point.

He was a co-founder and first president of the Crown Point Community Foundation and a board member from 1990 until 2005. Early into his involvement with the Foundation, he saw a need to establish and support the Operating Endowment Fund.

"One of the early matching gifts the CPCF received was a 3 to 1 match for Operating Endowment Funds," Joe said. "If a foundation raised \$25,000, Lilly Endowment Inc. would match with \$75,000."

Joe and his wife Jane believed in the importance of raising the full amount. When the Foundation's fundraising efforts were close but not quite there, they generously gifted some appreciated stock to the Foundation establishing the Joseph and Jane Nerney Operating Endowment Fund. Thanks to their generosity, the Foundation received the full amount for the match.

As one of the founders of the Crown Point Community Foundation, Joe Nerney helped to ensure its future.

Like all nonprofits, the Crown Point Community Foundation has ongoing operating expenses such as office costs and staff salaries. To help to support the Foundation, the CPCF established its Operating Endowment Fund. Donations to this fund go towards the day-to-day costs of the Crown Point Community Foundation.

One of the earliest supporters of this fund was CPCF co-founder Joe Nerney.

Born and raised in St. Joseph, Missouri, Joe Nerney graduated from Benedictine College in Atchison, Kansas. He put himself through college by working at a Coca Cola bottling plant and served two years in the U.S. Army. Joe came to Crown Point as a sales manager for Whiteco Industries. In 1969 he entered the insurance business with CIGNA Financial Advisors. He retired in 2001.

Jane grew up in Lafayette, Indiana. In 1961 she met and married Joe in Chicago where she was a nurse at Wesley Memorial Hospital. In 1966 Joe's job brought them to Crown Point. "We have been active in the community and love Crown Point," Jane said. "It was the perfect place to raise our four children."

Editor's Note: After we interviewed Joe and Jane, Joe passed away on July 9, 2024. We dedicate this story to his memory and to his many contributions to the Foundation and the community.

JOE WAS A PILLAR IN CROWN POINT AND HIS ENERGY AND PASSION WILL BE MISSED. JOE'S PASSION FOR THE FOUNDATION WAS A KEY COMPONENT IN HELPING START A GREAT ORGANIZATION THAT HAS IMPACTED SO MANY INDIVIDUALS AND ORGANIZATIONS.

MIKE DEXTER

CPCF CHAIRMAN OF THE BOARD



PHOTOS: MAKE-A-WISH FAMILY IN HAWAII.



With your help, a critically ill girl from Crown Point had her wish come true.

A Crown Point Community Foundation grant for \$7,100 was awarded to Make-A-Wish Ohio, Kentucky and Indiana (OKI).

The mission of Make-A-Wish OKI is to fulfill life-changing wishes for children with critical illnesses. Children between the ages of 2½ and 18 who are diagnosed with a critical illness and haven't received a wish before are eligible for their program. In 2023, the OKI chapter's goal was to grant the wishes of over 1,200 children.

Wishes provide what medicine cannot – extraordinary and memorable experiences that allow children to take their focus off of illness and enjoy a sense of renewed normalcy. The majority of wish kids, about 80%, go on to beat their illness, and as adults, many tell

Make-A-Wish that their wish marked a turning point in their road to treatment and recovery. Research shows that children who have wishes granted can build the physical and emotional strength they need to fight their critical illnesses, potentially improving their quality of life and producing better health outcomes.

Every year in Indiana alone, more than 640 children are newly diagnosed with a critical illness. Make-A-Wish OKI's current resources allow them to grant approximately 200 wishes in their region every year, but the continued annual influx of children qualified to receive a wish does not allow them to meet these families' growing needs. Thus, a large pipeline of wishes has begun to accumulate. In Lake County alone, they have over 30 children currently on their wish journey, waiting for their wishes to come true.

"Without the opportunity to expand our financial support and wish granting resources, we will not be able to adequately meet these needs



without extended wait times for our kids and families,” said Rachel Terhorst, NWI Advancement Officer at Make-A-Wish OKI. While the average cash cost of a wish is \$7,100, the average value of a wish exceeds \$10,000+. The additional value of a wish comes from in-kind donations. This is highly dependent on the wish type. For example, frequent flier mile donations can be used to help offset travel costs. Over 80% of the wishes Make-A-Wish OKI grants involve some kind of travel.

The CPCF grant enabled Make-A-Wish OKI to grant the wish of a young Crown Point resident who was battling cancer. The grant made it possible for the girl, her two older sisters, and her parents to take a trip to Hawaii.

While on the beach, the wish recipient received her final dose of chemotherapy. This made the trip to Hawaii not only the fulfillment of her wish, but also a joyous celebration for her and her family!

For more information about Make-A-Wish OKI, please visit oki.wish.org.



HEARING MY 6-YEAR-OLD DAUGHTER’S WISH
HAD BEEN GRANTED, AFTER MONTHS OF WATCHING
HER BATTLE CANCER, WAS TRULY A DREAM COME TRUE!
OUR FAMILY IS FOREVER GRATEFUL FOR THE LOVE
AND SUPPORT FROM OUR COMMUNITY! THANK YOU
FOR MAKING WISHES COME TRUE FOR
CROWN POINT KIDS JUST LIKE MY DAUGHTER!

MAKE-A-WISH MOM

A

360 Fit, LLC
 Mary Ann Abraham
 Mark & Kristine Adams
 AHEPA Chapter No78 Charities Inc.,
 Andrew Kyres
 Jerry & Trish Allee
 Joseph & Annette Allegretti
 Lynn Almaguer
 Al's Fire
 Trish Alt
 AmazonSmile Foundation
 Joseph & Lori Amodeo
 Rick & Cathy Amodeo
 Melissa Anderson
 Thomas & Kathryn Anderson
 Gail & Dave Andre
 Arley Blair Insurance and Financial
 Linda & Greg Armstrong
 Asphalt Service Contractors, Inc.

B

Scott & Tracy Babjak
 Frank Baccino
 Kenneth & Rita Backe
 Irene Bairaktaris
 Aileen Balazs
 Kathy Balazs-Williams
 Ben & Angela Ballou
 Jeffrey & Roxanne Ban
 Matt & Sandy Bapple
 Dave & Paula Barancyk
 The Barce Family
 Barney Family Foundation,
 John & Ann Barney
 Barney Family Foundation,
 Kathleen Smith, Ann Barney, Julie Bieszczat
 John & Ann Barney
 The Bart Vickrey Team-Listing Leaders
 Denise Bashore

Mark & Lindsay Bates
 David & Helen Batusic
 David & Jill Beckham
 Ralph Bennett IV
 Kelly Bermes
 Bryan Bernacki
 Mary Bernacki
 Thomas & Laura Bertagnolli
 Bierman Property Management,
 Brett Bierman
 John & JoAnn Birdzell
 Blade Cutters II LLC
 Joseph & Linda Bloomfield
 Scott & Janet Bordui
 Ted Borggren & Jacqueline Stuck Borggren
 Bethany Borgo
 Suzanne Borto
 David Bowers
 Gregory & Kellie Bowers
 Robert & Barbara Bowers
 William & Beverly Breyfogle
 Dr. Gary R. & Indira Brigham
 The Brist Family
 Brad Brown,
 Region Windows & Ventilation LLC
 Brown & Sons Services
 Sam & Sheila Brune
 David Bryan
 Richard & Debra Bryan
 Zack Bryan
 Jeff & Linda Bryner
 Kenneth & Nada Buczek

C

Vasko & Michele Cacovski
 Juliana Caffarini
 Ann Cain, Bedarra, LLC
 Dan & Sharol Cain
 Neil Callahan
 Jerry Caravana

Richard Caravana
 The Card Family
 The Carmichael Family
 Larry Mathias & Sherri Casterline
 Hydrie & John Cavoulas
 Centier Bank
 Katherine & Fred Chariton
 Chrisanne & Mark Christ,
 Site Restoration Services
 Jonathon & Tina Christiansen
 City of Crown Point,
 Mayor Pete Land
 Glenn & Margot Clark
 The Clean-Up Crew,
 Rich Ready
 Cloudbusters Inc.
 Coffman Proactive CPA Services
 Ryan & Linda Collier
 Colonel John Wheeler PTA
 Commercial In-Sites, LLC
 Community Help Network, Inc.
 Robert & Kathleen Conard
 Patricia Conway
 Eileen Corelli
 Laurence & Susan Costin
 Margaret Coulehan
 Crown Point Cal Ripken Youth Baseball
 Crown Point High School Theatre Booster Association
 Crown Point Lions Club, Inc.
 Crown Point Rotary Club
 Crown Rentals, Inc.
 James Crisman
 Mark & Patti Croell
 Janet Curley
 Craig & Deanna Curtis
 Joseph & Gayle Czarnik

D

D & D Napa Inc
 D & L Wood Products, Inc.

Susan Daily

Dan DiTola Insurance Inc.

Michael Daugherty & Donna Sapone Daugherty

Pastor Joyce Davis

DCMM, Inc.

Troy & Airel DeBaun

Zachary & Jordan DeFries

Suzanne Demmond

Deny Machine Shop

Mike & Karen Dexter

John & Louise Diederich

Gary & Marie Dienes

Teresa Dille

Eric & Robin Dillon

Katherine Dluzak

John Dockus

Raymond & Donna Doherty

Carol Drasga

Craig & Janet Duchossois

Chad Duffy & H. Barrett Fromme

Michelle Duffy

Dan & Alison Duncan

E

Thomas & Nancy Echterling

Debbie Edwards

Mark & Mary Edwards

The Egan Family

Robert & Reba Eich

Eisenhower School PTO

Frank & Nancy Eksten

Thomas Elder & Susan Driscoll Elder

Ryan & Tara Elinkowski

Elite One Property Management

Cheri Emery & family

Bob & Gwen Eriks

Evans Tree Care,

David Evans

F

Charlotte Fedorchak

First Financial Bank

James & Patricia Fitzpatrick

Shirley Forney-Bates

Greg & Nancy Forsythe

Scott & Maureena Foster

Patrick Fotia & Charlotte O'Shea

Paul Fotia

Franciscan Alliance

George & Jacqueline Frank

Fraternal Order of Eagles Cedar Lake Aerie#2529

Jennifer Frazier

Ronald & Marian Fricke

G

Christopher & Monice Gall

Larry & Pamela Gardner

Marti, Chris & Bethany Garretson

Barbara Gederian Muckel

Anthony & McKenzie Geisen

Russ & Margie Gertsch

Barb Gillan

The Glick Family Foundation

Golden Apple

Charles & Diane Gora

Gerry & Dawn Gora

Gregory & Diane Gordon

Myrene Gordon

Jeffrey & Pamela Govert

Kara Graper

Dan & Kim Greco

Carol Green-Fraleay

Green Ivy Inc.,
dba R. Bar & Grill

Sharon Gremel

Wayne Gruber

Karen Grzych

Cindy Grzych-VanVolkenburgh

Gurley Leep Automotive Family

H

Denise Hahn

Cindy Hall

Keith & Lori Hanaway

The Hansen Family

Stephanie Harnew

Crystal Harrigan-Barry

Dr. Janell Harvey

Thomas & Marcia Haverstock

Havyn Homes

Richard Henn

Jeffrey & Diane Hess

Steve & Carol Highsmith

Carole S Hiltman

Gregory & Rochelle Hoffman

Atty Thomas Hoffman

Georgene Johnson

Anna Holem

Collis Hooks

Robert & Louise Hooper

Chuck & Darlene Hopp

Arliss Hove

Steve Howard

Dixie Hruska

BJ Hubbard

Donald & Joyce Huber

Patricia Huber

Larry & Roxanne Huelat

Monna Hummel & Larry Wright

Kevin & Renee Huseman

James Hutton

I

Innovative Energy,

Jonathon Hagerbome

Joseph Irak

John Isley

J

Michael James
Maggie Jamrose
Helen Siukola Jancich
John W. Anderson Foundation
Eric & Tara Johnston
Jonathan & Margaret Jollief
Dean & Sara Jones
Taylor Jones
Josam Company

K

Judith Kaleta
Marilyn & Lester Kaper
Kappa Kappa Kappa, Inc.,
 Gamma Theta Chapter
Janet Katich
Gus & Michelle Katsaros
Gus & Michelle Katsaros - Tri Kappa
Brett Keeler
Delos & Karen Keene
Paula Keller
Jeffery & Deborah Kelley
Mary Kelliher
Jack & Diane Kemp
Dawn Kepsire
Charles & Susan Kerr
Marge Kerr
Melissa Kerr
KFC of Valdosta
Lowell Killion
Dan & Vicky Klein
The Klepsch Family
Glenn Kholmeyer
Bill & Deb Kolloway
Kosiara Insurance Agency, LLC
Mark & Susan Koza
Barbara Kvachkoff

L

Jeff & Jean Lahm
Lake Street School PTO
James & Esther Lambert
Jane Lambesis,
 Federated Hermes
Mary Jo Lane
Langel's, Inc.
Jim & Kim Larsen
Law Offices of Karl E. Hand, P.C.
Judith Lazar
Nancy Lear
Randy Leffelman
Angela Leimer, RbA/Esler
William Lepak
Steve & Kathy Lessner
Jeanene Letcher
Sharon Letz
Randy & Mary Jane Lewis
Thomas Leyden
LGS Plumbing
Ann Libak
Robert & Peggy Ligda
Roger & Mariellen Liggett
Likas Limited
Corey & Charlotte Liss
Tom & Kathy Liss
Liss CARSTAR Collision Center, Inc.
Lighthouse WFG Hobart Inc
Minas Elias & Stasia Litos
LK Properties, Larry & Kim Geisen
Bob & Cinta Lowe
Thomas Luther & Marcia Elkin
Robert & Karen Lynn
Lynnie Ques, Lynn Cartwright

M

Dennis & Jayne Madsen
Majestic Care-St. Anthony Home

John Manis,
 Manis CPA Services Inc./Manis Accounting
Robert & Darlene Marchina
Suzie Matalin
Eugene & Linda Matzat
Joshua & Lauren Mauk
Jay & Carrie Mayden
James & Phyllis McDonald
Janet McDonald
Robert & Pamela McDonald
Helen McEntire
Timothy & Nancy McKenna
McMahon & Associates, CPA's PC,
 Terry McMahon
David & Darlene McMichael
John McMichael
Joseph & Nancy Medellin
George Melchor
Mike & Sandra Mendoza
Richard & Kathleen Merriitt
Ron & Janet Mesarch
Bonnie Meyer
Joseph & Rosanne Michellini
Joyce Middleton
Darryl & Pat Miller
Ralph & Lou Ann Miller
Mark & Karen Mitcheltree
Alan Monix
Dawson & Brenda Morgan
Gloria Morris
Morse Realty & Consulting Services
Donna Moser
Bonnie Muir

N

Dr. Allan & Sally Nalbor
Tyler Neal
Joseph & Jane Nerney
Network for Good

Stacy Niedert
Keith & Mary Nielsen
Lew & Sandra Noe
Tom & Marie Novotny
Nicole Nowicki
NWI IV Drip Spa LLC

O

Diane O'Brien
Richard & Bette Oesterle
Brian Olenik,
48 Hour Pools
Dale & Sandra Oliver
Debbie O'Meara
Open Hearts Therapeutic Riding Center Inc.
Karen Ostrowski

P

Roger & Donna Pace
Larry & Sandra Palmiter
The Panfil Family
Jeff & Julie Pape
Thomas & Karen Pavel
Onie & Coral Penzato
Peoples Bank,
Ben Bochnowski
Carole Pepa
Jeffrey Perz
Pete & Sons Auto Repair, Inc.
Jack & Karin Pettit
Jessica Pettit Albaugh
Pheenix Rail Road Consulting,
Dale Packard
Phil & Son, Inc
Faye Platt
Mark Platt
Thomas Platt & Uta Rehm
Popovich Dental Corporation,
Natalie J. Popovich & James G. Popovich

Brian Popp,
Laszlo & Popp, PC
Positive Solutions,
Andrea Kelliher
Thomas G. Pruzin
Robin Pulido
Puntillo & Crane Orthodontics, PC
Beth Pyne

R

Ray & Sandi Radoja
Sam Raich III
Tim & Vickie Rainwater
Refax, Inc
Jeff & Diane Reimer
Mark & Sue Riester
Jennifer & Patrick Ritter
Riversedge Management,
William Rathjen
Roger & Shirley Rodda
Timothy Rodda
Florence Roen
Scott & Renee Roen
Susan Roen
John & Kathleen Roeser
John & Maureen Rogers
Daniel & Carol Root
Kathie Rosdil
Terese Rouge
Jane Rouge Martin
Joe & Mary Kay Rowe

S

Jaswinder S. Sahi
James Saksa
Joseph & Carol Sanders
Jeffery & Martha Sapp
Dick & Laura Saverman
Gerald & April Schaefer



HELP US LEAD, ENGAGE
AND ENRICH OUR COMMUNITY



WHY WE GIVE: Centier Bank strives to ensure that the quality of life for all who live and work in our communities is a top priority. Through corporate dollars, volunteerism, and financial education, we consistently aim to make a greater impact in our communities. Centier has preserved hometown banking since 1895, and promises to continue that legacy for generations to come.

MISSION: Indiana's largest private, family-owned bank is a testament to the idea that no matter how large a business grows, it is still possible to provide remarkable service. This comes naturally to Centier associates because of our servant heart culture. We have come to be known for warm, personalized service and relationship-style banking. Centier Bank's commitment to community means neighbors are serving neighbors, working together to create a better way of life today and for future generations.



Member
FDIC www.centier.com

Centier Bank and our Associates
are dedicated to the communities
we serve across Indiana.

Donors

Schepel Buick - GMC,
Thomas VanProoyen
Alvin & Kathryn Schmidt
Barry & Mary Schneiderman
Wendy Schreiber
Bridget Schroeder
Maxie Scott
Dr. Pamela & John Seaman
Timothy & Peggy Sendak
Peg Shaffer
Betty Shahbaz
Robert & Diana Shannon
Kris Sheehy-Rabig
Sheehy Well & Pump Co., Inc.
Vic & Jewell Sheldon
Josh & Melissa Sickinger
Signature Realty,
Brenda & Jeffrey Versnel
Karen Siler
John & Sue Simko
Scot & Karen Simnick
Skyway Trucking, Inc.
Geoffrey Slaughter
SLP Comercial & Janitorial,
Sara Ybarra-Jimenez
Small Web Solutions,
Jackie Webster
Susan Smith
Thomas & Kari Smith
Mark & Deborah Snedden
Solon Robinson PTO
Tammie & Philip Sopczak
The Sramek Family
Allen & Linda Sredzinski
St. Mary Home & School Association
Mary Steele
Sandra Stevens
Carolann Stewart
Gilbert & Gail Stiener
Vicki Stojkovich

Bonnie & Kurt Summers
Cliff Sumner
Rich & Linda Svihra
Richard Sweeko & Judy Hartz Sweeko
Swing Logic Ventures LLC
Szuba Dezigns, Becky Szuba
David & Sally Szumski

T

Tax Techniques, Cathy Cooper
David & Lori Taylor
Suzanne Teesdale
William Thesing
Michelle Lynn Thiel
Brett Thompson
Megan Thornberry
Timothy Ball Elementary PTO
Timothy Bianco, Attorney at Law
To-A-Tea Corp/Little Italy Dyer
Mary Tracy-MacAulay
Tri*Star Pipe and Supply
Tri-Creek Ambulance Service Agency, Inc.
Tri-Creek Education Foundation, Inc.
Whitney Trimble
Michael Troxell
Judith Trump
Ernie Turpin

V

Lynn & Allen Aron VanHouten
Robert VanHouten & Colleen Jay
John & Barbara VanRamshorst
Jeanne VanSlyke-Huddleston
Alda Vellutini
Coleen Viers
Linda Viers, Chelsea & Taylor Baran
William & Bonnie Vinovich

W

Jeremy Michael Walker
Melissa Walley
Cyndi & Timothy Walsh,
Walsh Advisors Inc.
Walter Cook Insurance Agency, Inc.
Cheri Warnke
Ronda Waters
Jean Wease
Julie & Mark Wendorf
Craig White
Mary Ann Wilczynski
Dale & Terri Williams
Alyssa Wilson
Winfield Parent Teacher Organization
Wipeco Inc.
Andy & Stephanie Wirtz
Barry & Margaret Wood
Donald, Julie & Alexis Woodburn
Suzann Wright

Y

Nicole Yarrow
Youche Country Club
Your Hometown Animal Hospital,
Carrie LaMere
Youth for Christ of NWI

Z

Alan Zacher
Todd & Julie Zasada
Ziese & Sons Excavating, Inc.
Rich & Kathy Zondor

In Kind Donations

LAMAR Advertising



PHOTOS: GIRL SCOUTS OF GREATER CHICAGO AND NORTHWEST INDIANA PROVIDE MANY EVENTS TO SUPPORT LEADERSHIP DEVELOPMENT.

With your help, two generations of leaders were given tools to help reach their potential.

A Crown Point Community Foundation grant for \$5,000 was awarded to Girl Scouts of Greater Chicago and Northwest Indiana (GSGCNWI).

Girl Scouts is the world's preeminent leadership development organization for girls. Its mission is to build girls of courage, confidence, and character, who make the world a better place. Since 1912, more than 50 million U.S. women have experienced Girl Scouting, and they are living proof of Girl Scouts' impact.

GSGCNWI provides an array of life-enhancing, transformational services to girls in South Lake County, which are available through the following pathways: volunteer-led and staff-led troops, camp, events and travel. The cornerstone is the Girl Scout Leadership Experience, which comprises five essential outcomes that girls achieve by participating in activities related to four program pillars: STEAM (science, technology, engineering, art and math),

life skills/healthy living, financial literacy/entrepreneurship, and outdoor education.

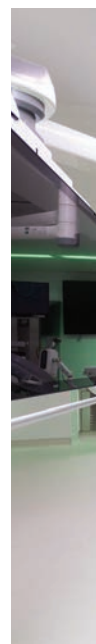
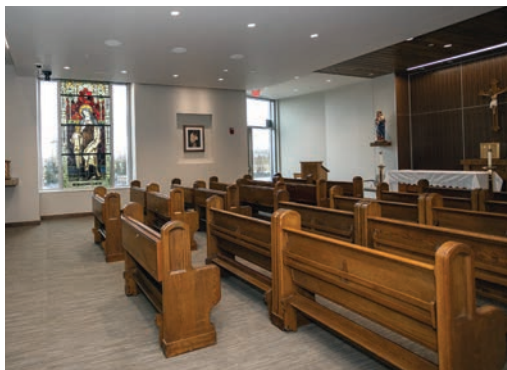
Girl Scouts takes the potential of girls, combines it with robust skill-building programming, and adds caring mentors and strong female role models to whom girls can look for guidance, inspiration and support. Services are also provided to adult volunteer leaders. This includes training in trauma-informed practice strategies (TIPS) so leaders can better support girls' mental wellness and build their resilience.

The CPCF grant helped to support the GSGCNWI's ongoing programs. For more information, please visit www.girlscoutsgcnwi.org.

I BECAME A GIRL SCOUT LEADER BECAUSE I WANTED MY GIRLS TO HAVE THE FUN THAT I HAD. I LEARNED SO MUCH THROUGH GIRL SCOUTS. IT MADE ME ABLE TO TALK TO ANYONE, ANYWHERE. IT PREPARED ME FOR LIFE. I AM GRATEFUL TO SEE MORE GIRL SCOUT EVENTS HERE IN INDIANA.

NATALIE SWANSON-GOMEZ

ASSISTANT TROOP LEADER FOR TROOPS 35609
AND 35752 IN CROWN POINT



PHOTOS CLOCKWISE FROM TOP LEFT: NEW FRANCISCAN HEALTH CROWN POINT HOSPITAL / CROWN POINT COMMUNITY FOUNDATION TOURS THE NEW HOSPITAL. FROM LEFT: RACHEL DODSON - PHYSICIAN ASSISTANT, FRANCISCAN PHYSICIAN NETWORK CROWN POINT; DEBBIE OLBROT - CARDIOLOGY PRACTICE MANAGER, FRANCISCAN PHYSICIAN NETWORK CROWN POINT; MIKE DEXTER - CPCF CHAIRMAN OF THE BOARD; MARY JO SPEARSON - DIRECTOR OF OPERATIONS, FRANCISCAN PHYSICIAN NETWORK CROWN POINT; KATIE SLY - CPCF PROGRAM AND ENGAGEMENT OFFICER; MARY NIELSEN - PRESIDENT CROWN POINT COMMUNITY FOUNDATION; JEFF BAN - CPCF BOARD OF DIRECTOR; DR. DANIEL MCCORMICK - PRESIDENT/CEO, FRANCISCAN HEALTH CROWN POINT; COREY LISS - CPCF BOARD OF DIRECTOR; DR. FAHEEM AHMAD - MEDICAL DIRECTOR, INTERVENTIONAL CARDIOLOGIST, FRANCISCAN HEALTH CROWN POINT CARDIOLOGY; DAN DUNCAN - CPCF BOARD OF DIRECTOR; DANIEL ROOT - CPCF BOARD OF DIRECTOR; KARIN KOLISZ - VICE PRESIDENT OF CLINICAL SERVICES, FRANCISCAN HEALTH CROWN POINT; CHRISANNE CHRIST - CPCF BOARD OF DIRECTOR; DR. J. MICHAEL TUCHEK - CARDIOTHORACIC SURGEON, FRANCISCAN HEALTH CROWN POINT CARDIOLOGY; DEAN JONES - CPCF BOARD OF DIRECTOR; AND RICK PELTIER - EXECUTIVE DIRECTOR, FRANCISCAN HEALTH FOUNDATION / ST. JOSEPH CHAPEL LOCATED IN FRANCISCAN HEALTH CROWN POINT.

The Crown Point Community Foundation has played a large role in the new Franciscan Health Crown Point hospital, which welcomed new patients on Jan. 28, 2024.

The modern facility at Interstate 65 and U.S. 231 includes 199 inpatient beds with room to expand to 300, as well as an attached medical office building and expandable diagnostic and treatment centers. It includes a hybrid operating room with the latest technology to care for cardiac patients, a neonatal intensive care unit with AngelEye cameras in each private room, a pediatric floor and the latest in technologies to enhance patient safety and convenience.

"Our board of directors understood that a significant investment was needed to provide a second-to-none hospital to support the highest acuity of patients in a convenient location," Franciscan Health Crown Point President and CEO Daniel McCormick, MD, said. "Our generous

donors, including the Crown Point Community Foundation, are key to bringing next-level care to the community."

The Crown Point Community Foundation's gift of \$100,000 to sponsor the new hospital's cardiology program and catheterization lab will bolster a heart program that has already been recognized among the nation's elite.

"The new hospital has greatly enhanced our capabilities. We have state-of-the-art equipment and highly trained doctors who are all committed to keep Franciscan Health as a cardiovascular center of excellence for this region," said Dr. Faheem Ahmed, Franciscan Physician Network cardiology service line medical director.

Franciscan Health Crown Point has earned a distinguished three-star rating from The Society of Thoracic Surgeons (STS) for its patient care and



PHOTOS FROM LEFT: HYBRID OPERATING ROOM / CARDIOLOGY DEPARTMENT WAITING ROOM.

outcomes in isolated coronary artery bypass grafting procedures. The three-star rating, which denotes the highest category of quality, places Franciscan Health Crown Point among the elite for open heart surgery in the United States and Canada.

Franciscan Health Crown Point cardiothoracic and vascular surgeon J. Michael Tuckek, DO, FACS, calls the STS designation the “crown jewel of rating systems.” He added that only 10 to 15 percent of hospitals in the U.S. receive the three-star rating for open heart surgery each year.

The Foundation’s contribution will continue to help heart patients like Karen Kneifel, who had quintuple bypass surgery at Franciscan Health Crown Point and wrote to Dr. Tuckek about her experience.

“I was very fortunate that my cardiologist... sent me to Crown Point for the catheterization and even more fortunate that you were in the hospital that day. You put my mind at ease that day in the recovery room,” she said. “I just want to thank you and your entire team for your caring manner, tremendous skill and your dedication to your patients.”

Franciscan HEALTH Crown Point

I AM INCREDIBLY GRATEFUL FOR THE CROWN POINT COMMUNITY FOUNDATION PROVIDING THE LEAD SPONSORSHIP GIFT FOR THE NEW CROWN POINT HOSPITAL. THEIR PHILANTHROPIC PARTNERSHIP IS A TESTAMENT TO THEIR COMMITMENT TO THE COMMUNITY AND HAS BEEN INSTRUMENTAL IN HELPING US CREATE TRANSFORMATIONAL CHANGE FOR THE MOST VULNERABLE PATIENT POPULATIONS WE SERVE. TOGETHER, WE ARE GETTING TO THE HEART OF ISSUES AFFECTING OUR FRIENDS AND NEIGHBORS.

RICK PELTIER
EXECUTIVE DIRECTOR
FRANCISCAN HEALTH FOUNDATION

Memorials

Nothing can ever replace the loss of a friend or loved one, but we can commemorate their life with an everlasting tribute reminding us that they are not forgotten. A memorial donation is a fitting way to remember a special person while at the same time helping others.

Gordon Bates	Denise Horton	Jack Pettit
Edna Mae Baxter	Kay Hubbard	Imogene Pilarski
Sue Bayer	Edward G. & Katherine R. Gerlach Huber	Beatrice "Betty" Reba
Dr. John & Helen Birdzell	Benton Scott Huddleston	Lawrence Rouge
Robert "Bob" Brown	Walter Huseman	Lawrence "Larry" Saylor
Amy Burich Cucio	Lee Jagow	Lisa Schaefer Stover
Wilbert E. & Betty Jane E. Buth	Jean Johnson	Mary Edna Sewell
Jerry Caravana	Jean Ann Johnston	Kenneth Smith
Donald & Theresa Cowan	Joe & Marian Jollief	Gerald "Jerry" Trump
Leroy Doty	Helen Kirk	Marie VanSlyke-Bean
Janet Drag	Daniel Kuzman	Richard "Terry" VanSlyke
John S. Dull	Ryan William Lepak	Robert Remington VanSlyke Sr
Joel E. Ebert	George Letz	Roger C. VanSlyke
Sue Elinkowski	Robert Ligda	Ronald John VanSlyke
Dick Garretson	Michael Malaski	Cole Viers
Mary Geimer	Tom Marshall	Lorraine Viers Steuer
Mary (Babe) Gregory-Geimer	Jim & Betty McDonald	Barbara Wahls Seaman
Dr. James Gentleman	Ken McEntire	Richard "Dick" Webb
Glenn W. And Bobbie Gintert	Isabelle "Izzy" Melchor	Bruce White
Richard "Dick" Gordon	Bryan Niedert	Dean & Barbara White
Jacqueline Mary Gutierrez	Michael O'Brien Sr.	Jim Wirtz
Grace Jean Henderson	Charles "Bob" Robert Onda	
Donna & Joe Heuer	Michael "Mike" Pepa	

Honorariums

Birthdays, weddings, graduations, anniversaries, and retirements are part of a long list of special events and reasons for honoring someone with a gift. An honorary gift is a fitting way to honor a special person while helping others.

John & Ann Barney	Dan Duncan,	Bette Oesterle
Alice Burrell	Community Volunteer	Faye Platt's birthday
John Cain	Eric & Kim Foss' Wedding	Martha "Marty" Wheeler
Pene Castor	Larry & Kim Geisen at Christmas	

Every effort is made to accurately list our contributors. If a name has been inadvertently omitted from the report, we apologize.



THE CROWN POINT COMMUNITY FOUNDATION IS DEDICATED TO ASSISTING YOU IN FULFILLING YOUR CHARITABLE GOALS.

PLANNING YOUR GIFT

The Crown Point Community Foundation is dedicated to assisting you in fulfilling your charitable goals by working with you to develop a plan that ensures your wishes are carried out now and into the future. Our knowledgeable staff understands the intricacies of planned giving and is committed to making sure your contributions are impactful, meaningful, and aligned with your philanthropic vision.

A planned gift is a powerful way to create a lasting charitable impact. These gifts, which can be made through your will, living trust, retirement plan, or other estate assets, allow you to support the causes you care about well beyond your lifetime. Planned giving can provide you with income during your or someone else's lifetime, making it a flexible and beneficial choice for your estate planning needs. Anyone can make a planned gift, regardless of the size of their estate, ensuring that every individual has the opportunity to make a significant and enduring contribution.

Not only does a planned gift allow you to maintain your assets during your lifetime, but it also provides valuable estate planning and tax benefits. Additionally, your directions and decisions are honored indefinitely, ensuring that your impact on the community is never-ending.

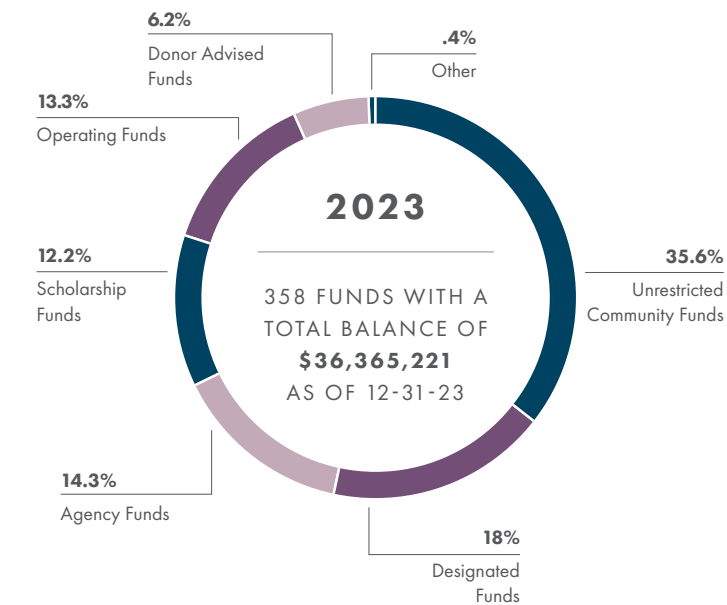
MANY WAYS TO GIVE

The CPCF offers a variety of options to help you establish your charitable fund. You can contribute to one of our community endowments or start a specific permanent fund dedicated to a particular cause or organization. Options include Unrestricted Community Endowments, Field of Interest Funds, Designated Funds, Scholarship Funds, and Donor-Advised Funds. Each of these vehicles offers different benefits and can be tailored to meet your unique philanthropic goals.

Our commitment at the CPCF is to help you achieve your charitable intent now and forever. We encourage you to work with your estate-planning professional and tax and financial advisors to consider the type of planned gift that is right for you and your family. Our expert staff is available to assist you and your advisors throughout this process. We can help you prioritize your goals, develop a charitable fund, and determine the most favorable way to achieve your lasting impact on the community. By working with the CPCF, you can ensure that your generosity continues to support the causes you care about, creating a better future for generations to come.

2023 BY THE NUMBERS

Over the past 33 years, the Foundation’s assets have grown thanks to generous donors and excellent investment returns. Our assets allow us to fulfill our mission to South Lake County and beyond, giving grants and scholarships.



EACH FUND TYPE FULFILLS THE DONOR’S WISHES

Unrestricted Fund distributions are granted to nonprofits providing services within South Lake County. Nonprofits apply for a grant; our grant committee reviews the applications and awards these grants.

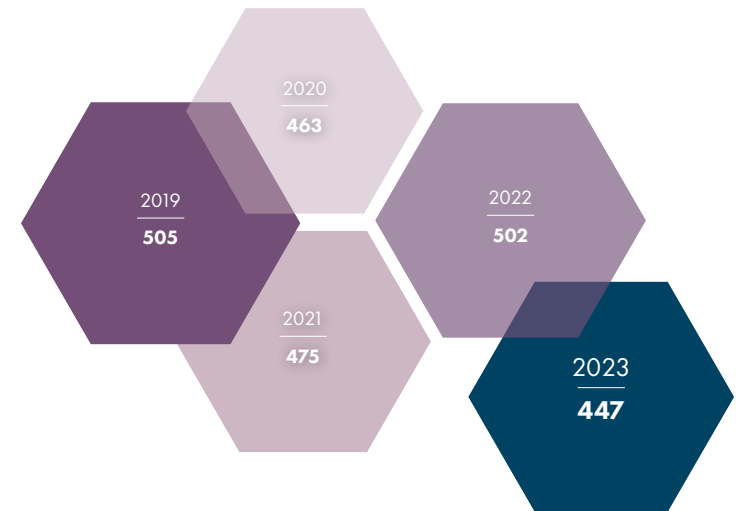
Donor Advised and Designated Fund distributions are granted according to the donors instructions, to nonprofit organizations.

Agency Funds are set up by a nonprofit organization to support their operational and program needs.

Operating Fund distributions support the foundation, allowing us to fulfill our mission to our donors, fund holders and community.

Scholarship Funds are set up by donors. Students apply for these scholarships yearly. The scholarship committee reviews all submitted applications and makes recommendations based on the criteria of each scholarship.

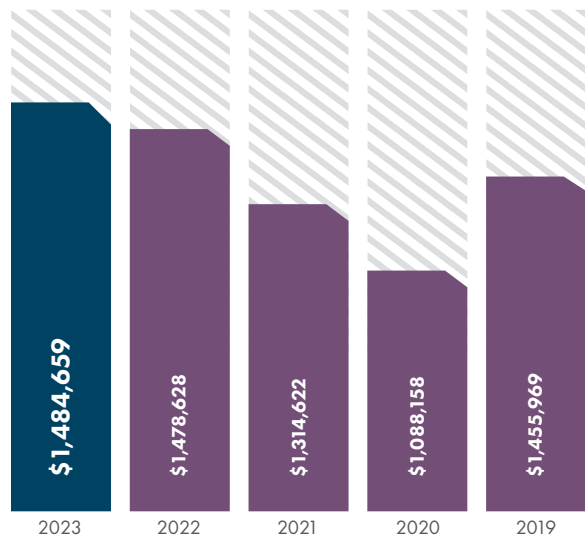
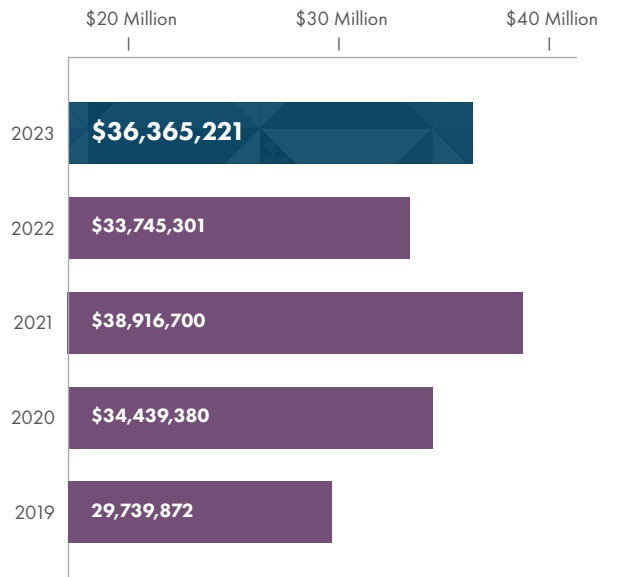
IN 2023, WE AWARDED MORE THAN \$1.5 MILLION IN GRANTS AND SCHOLARSHIPS



NUMBER OF GRANTS AND SCHOLARSHIPS AWARDED

In 2023, the Crown Point Community Foundation distributed 477 grants and scholarships that supported a multitude of causes and higher education.

TOTAL ASSET GROWTH - PAST 5 YEARS -



GRANTS AND SCHOLARSHIPS AWARDED

Excluding internal grants.

FINANCIALS

Crown Point Community Foundation, Inc.
summarized financial information
year ended December 31, 2023.

Total Assets: \$ 36,365,221

Liabilities and Fund Balance:

Agency Funds 3,311,745

Endowment/pass-through Funds 33,053,476

Total Liabilities and Fund Balance: \$ 36,365,221

Revenue:

Contributions and grants received 669,100

Investment return 3,600,027

Operating endowment revenue 336,871

Total Revenue \$ 4,605,998

Expense:

Grants paid to the community 1,344,918

Administrative fee expense 305,930

Operating expenses 544,588

Total Expense \$ 2,195,436

Change in Net Asset \$ 2,410,562

COMPLETE FINANCIAL STATEMENTS WITH ACCOMPANYING FOOTNOTES ISSUED BY
BLUE & CO., LLC ARE AVAILABLE AT THE CROWN POINT COMMUNITY FOUNDATION'S OFFICE.

Thank You

SOUTH LAKE COUNTY



HELP US LEAD, ENGAGE AND ENRICH OUR COMMUNITY

Community Partners are local companies or individuals who join forces with the Crown Point Community Foundation to promote and expand philanthropy, address community issues, and develop nonprofit excellence.



DEAN AND BARBARA WHITE
FAMILY FOUNDATION

Edward Jones
MAKING SENSE OF INVESTING

EUGENE & JEAN WEASE



HOFFMAN
CHARITABLE FOUNDATION

JOHN & ANN BARNEY
FAMILY FOUNDATION



Morgan Stanley



CROWN POINT
**community
foundation**
CREATING A BETTER FUTURE
IN SOUTH LAKE COUNTY

115 S. Court Street, Crown Point, IN 46307
PO Box 522, Crown Point, IN 46308

p 219.662.7252 f 219.662.9493
w thecpf.org e info@thecpf.org

MEMBER



CFNS

ACCREDITED
FOUNDATION
COMMUNITY FOUNDATIONS
NATIONAL STANDARDS