



CROWN POINT
**community
foundation™**

CREATING A BETTER FUTURE
IN SOUTH LAKE COUNTY

EXPANDING **OUR IMPACT**



ANNUAL
REPORT 2024

LETTER FROM THE PRESIDENT AND CHAIRMAN OF THE BOARD

EXPANDING OUR IMPACT

SOMEONE IS SITTING IN THE SHADE
TODAY BECAUSE SOMEONE PLANTED A TREE
A LONG TIME AGO.

WARREN BUFFETT

AMERICAN INVESTOR AND PHILANTHROPIST
WHO SERVES AS THE CEO AND CHAIRMAN
OF BERKSHIRE HATHAWAY



MARY B. NIELSEN
PRESIDENT



MIKE DEXTER
CHAIRMAN OF THE BOARD
EDWARD JONES INVESTMENTS

Dear Friends,

Every year brings new challenges and opportunities and in 2024, we embraced both with purpose and optimism. Guided by our mission and inspired by the needs of our neighbors, the Crown Point Community Foundation deepened its roots and broadened its reach across South Lake County.

Thanks to your generosity and shared commitment, we continue to build a stronger, more resilient community—one where every gift plants the seeds for lasting impact. In 2024 alone, we awarded over \$1.6 million in grants and scholarships to support programs that educate, uplift, and connect.

Here are just a few of the initiatives your support made possible:

- Celebrated the 15th Annual Volunteer Fair & Blood Drive, our beloved Symphony on the Lawn concert event, and another impactful year of the Women's Giving Circle.

- Invested in early childhood education, STEM learning, and real-life experiences for students with disabilities across the Crown Point school system.
- Helped expand access to essentials like food, clothing, housing assistance, and wraparound support services for families in need.
- Launched the Nonprofit Academy—a new initiative to build skills, confidence, and collaboration among local nonprofit professionals.
- Awarded a \$20 million grant in collaboration with regional partners from Lilly Endowment Inc. for the NWI Thrive Initiative.

We're also excited to share continued progress through the Lilly Endowment Inc. GIFT VIII initiative, which awarded CPCF a **\$1,875,000** matching grant. These matching opportunities will help strengthen critical community resources and ensure lasting impact across South Lake County.

Together, we are expanding our impact in bold and meaningful ways. With each step forward, we are deepening our commitment to the community, creating lasting change that reaches further and uplifts more lives. By staying focused on our mission and investing in what matters most, we are laying the groundwork for a stronger, more vibrant future now and for generations to come.

Yours in Philanthropy,

MARY B. NIELSEN

MICHAEL P. DEXTER

SMALL ACTS, WHEN MULTIPLIED BY MILLIONS
OF PEOPLE, CAN TRANSFORM THE WORLD.

HOWARD ZINN
AMERICAN HISTORIAN



17



33



9



23



24



35

32

CONTENTS

- 2 BOARD OF DIRECTORS
- 3 CPCF STAFF
- 4 ABOUT THE CPCF
- 8 UNRESTRICTED FUNDS FOR COMMUNITY GRANTS
- 10 COMMUNITY GRANTS
- 11 FIELD OF INTEREST FUNDS AND GRANTS
- 12 SCHOLARSHIP FUNDS
- 14 DESIGNATED GRANTS
- 18 DONOR ADVISED FUNDS
- 19 AGENCY FUNDS
- 22 OPERATING SUSTAINABILITY FUNDS
- 26 DONORS
- 34 MEMORIALS
- 34 HONORARIUMS
- 36 FINANCIAL SUMMARY
- 37 FINANCIALS

FEATURE STORIES

- 5 CPCF'S 2024 HIGHLIGHTS
- 6 CROWN POINT COMMUNITY SCHOOL CORPORATION
- 9 THEODORE L. AND TENNESSEE E. SENDAK FAMILY FUND
- 17 CATHOLIC CHARITIES
- 20 LILLY ENDOWMENT INC. GIFT VIII INITIATIVE - \$1,875,000 MATCHING GRANT CHALLENGE
- 21 HANOVER COMMUNITY SCHOOL CORPORATION (RED CEDARS SOCIAL WORK DEPARTMENT)
- 23 CHASING DREAMS
- 24 ALPHA FAMILY RESALE
- 32 NWI THRIVE REGIONAL INITIATIVE - AWARDED \$20 MILLION GRANT
- 33 NONPROFIT ACADEMY
- 35 SOUTH LAKE COUNTY AGRICULTURAL HISTORICAL SOCIETY



Scan QR Code to
Give Online Today:
theccpf.org/donate.html



6

BOARD OF DIRECTORS 2024

Executive Committee



MIKE DEXTER
CHAIRMAN OF THE BOARD
EDWARD JONES INVESTMENTS



CYNDI WALSH
FIRST VICE CHAIR
WALSH ADVISORS



COREY LISS
SECOND VICE CHAIR
CARSTAR LISS AUTO BODY



DARRYL MILLER
TREASURER
RETIRED, INLAND STEEL



GREG FORSYTHE
SECRETARY
FORSYTHE WEALTH MANAGEMENT

Board of Directors



CHRISANNE CHRIST
EX OFFICIO
CENTIER BANK



JOHN BARNEY
EX OFFICIO
BARNEY ENTERPRISES



BEN BALLOU
BALLOU LAW, LLC



JEFF BAN
DVG TEAM, INC.



INDIRA BRIGHAM
UNIVERSITY OF ST. FRANCIS



DAN DUNCAN
PEOPLES BANK



KEVIN HUSEMAN
KINGDOM HOUSING, LLC



DEAN JONES
MIRAR CUSTOM HOMES, INC.



JENNIFER LINSLEY
CROWN POINT COMMUNITY SCHOOLS



JOHN MANIS
HEIDBREDER, INC.



DANIEL ROOT
COMMUNITY ADVOCATE



DICK SAUERMAN
RETIRED, NEW BUFFALO SAVINGS BANK



PAMELA SEAMAN, DO
SOUTH LAKE WOMEN'S HEALTH, P.C.



SHANNON SHEEHY
SHEEHY WELL & PUMP CO., INC.

CPCF STAFF 2024



MARY B. NIELSEN
PRESIDENT



LORI AMODEO
ADMINISTRATIVE AND
FINANCIAL ASSISTANT



GAIL L. ANDRE
FINANCIAL BUSINESS AND
DATA MANAGER



JEANETTE HUSS
MARKETING AND
COMMUNICATIONS MANAGER



KATIE SLY
PROGRAM AND ENGAGEMENT OFFICER



KATHY WILLIAMS
EVENTS ORGANIZER

EVERY PERSON HAS THE POWER TO
SHAPE THE FUTURE - WE JUST SHINE
BRIGHTER WHEN WE DO IT TOGETHER.

UNKNOWN

ABOUT THE CROWN POINT COMMUNITY FOUNDATION

The Crown Point Community Foundation (CPCF) exists to strengthen our community now and for generations to come. Our vision is to serve as a trusted partner for giving and receiving, connecting donors with local causes and helping shape a better future for South Lake County.

Since 1990, CPCF has supported the communities of **Crown Point**, **Cedar Lake**, **Lowell (Tri-Creek)**, and **Winfield** through charitable and civic initiatives. As a public charitable organization, we are committed to building permanently endowed funds that provide long-term support for local nonprofits, scholarships, and community projects.

We help individuals, families, and organizations achieve their philanthropic goals through a variety of giving options. A 19-member volunteer Board of Directors, made up of local leaders, oversees the investment of these pooled funds and guides the Foundation's strategy and impact.

Each year, earnings from our endowments are distributed as grants and scholarships, ensuring that charitable dollars continue to meet community needs—today, and in the future.

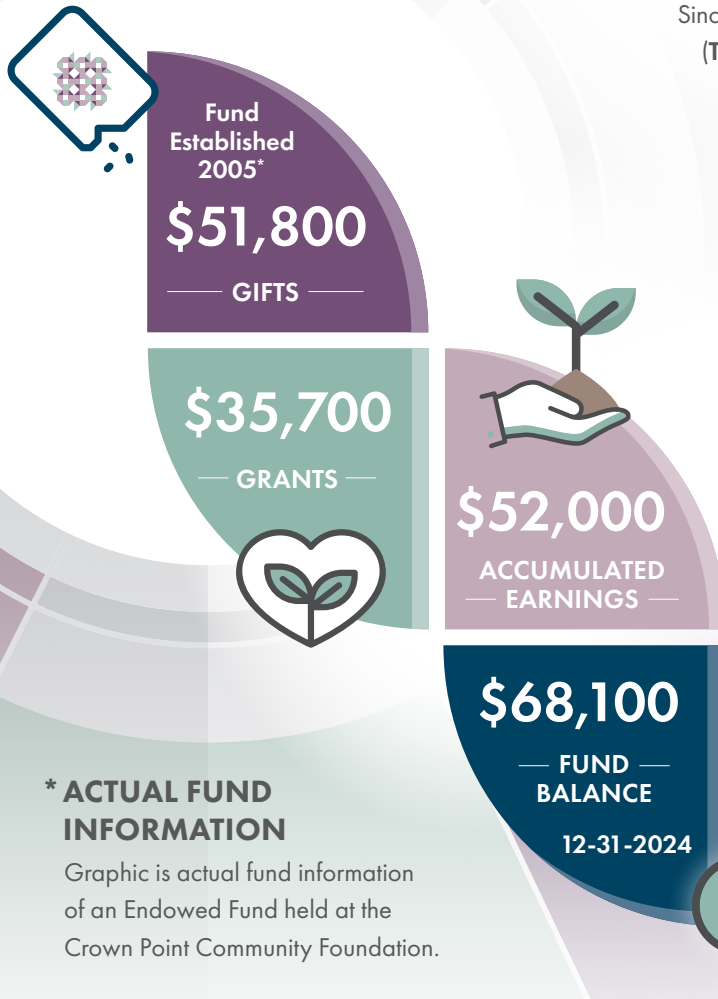
HOW IT WORKS

THE POWER OF ENDOWMENT

GROWTH OF AN ENDOWED FUND

With an initial gift of \$51,800 in 2005, the fund balance 19 years later is \$68,100 and has already distributed \$35,700 in grants!

Learn how to make your love for South Lake County and beyond last with your own Endowment Fund.



CREATING A BETTER FUTURE IN SOUTH LAKE COUNTY IN THREE STEPS

1

Receive Gifts

Individuals, groups and businesses create an endowment (permanent fund) at the CPCF.

2

Grow Gifts

The endowments are invested by the CPCF and its Board of Directors.

3

Give Gifts

Grants are awarded in specified cycles throughout the year. Grants are given both to causes which were specified by donors and to those that are selected by the CPCF grant committee.



PHOTOS CLOCKWISE FROM LEFT: WOMEN'S GIVING CIRCLE MEMBERS (LEFT TO RIGHT) CAROL SANDERS; LAURA SMALL; AND JILL BECKHAM / KATIE SLY (LEFT), CPCF PROGRAM & ENGAGEMENT OFFICER AND CPCF BOARD MEMBER CHRISANNE CHRIST (RIGHT) VISIT 15TH YEAR PARTICIPANT ST. JUDE HOUSE / NORTHWEST INDIANA SYMPHONY ORCHESTRA CAPTIVATED THE CROWD DURING THE JULY SYMPHONY ON THE LAWN CONCERT.

GRANTS, GIVING, AND GREAT MUSIC

A Look at Crown Point Community Foundation's 2024 Highlights

In 2024, the Crown Point Community Foundation continued to celebrate and strengthen community connections through three of its most popular annual events: the Volunteer Fair & Blood Drive, Symphony on the Lawn, and the Women's Giving Circle.

Volunteer Fair & Blood Drive

Held each spring, the Volunteer Fair & Blood Drive brings together more than 50 nonprofits from across Lake County to connect with individuals looking to give back. This year marked the event's 15th anniversary and included a special surprise: six participating organizations were randomly selected to receive \$2,500 grants from the Foundation, in support of their mission.

Symphony on the Lawn

A beloved summer tradition, Symphony on the Lawn drew more than 3,000 attendees to the Saint Anthony Majestic Care campus in Crown Point. Co-sponsored by the Crown Point Community Foundation, the event featured a spectacular performance by the Northwest Indiana

Symphony, led by conductor Kirk Muspratt.

Women's Giving Circle

The Women's Giving Circle (WGC) gathered once again for its annual Collective Grantmaking Event at East Point Venue, awarding a total of \$20,500. The grants included:

- \$10,000 distributed to five nonprofits that received the most votes (\$2,000 each)
- \$2,500 earmarked for the 2025 WGC Scholarship
- \$10,000 contributed to the Foundation's Unrestricted Community Grantmaking Fund, which supports local programs and needs throughout the year.

Open to all women in the community, the WGC invites participants to make a gift of \$100 or more, which is then pooled and awarded to local organizations through a collaborative giving process.



PHOTOS FROM LEFT TO RIGHT: A LOCAL TEACHER SHARES A STORY WITH PRESCHOOLERS DURING LIBRARY TIME / PRESCHOOL STUDENTS EXPLORE THE WONDERS OF NATURE DURING A HANDS-ON LESSON / A PRESCHOOLER LIGHTS UP WHILE ENGAGING IN A FUN AND EDUCATIONAL CLASSROOM ACTIVITY.

Investing in the Future: CPCF Supports Crown Point Schools with \$28,000 in Grant Funding.

Thanks to a \$28,000 grant from the Crown Point Community Foundation, students across the Crown Point Community School Corporation (CPCSC) are gaining access to new tools, opportunities, and resources that foster creativity, independence, and lifelong learning. These funds support three innovative programs that meet a wide range of student needs—from early childhood education to STEM learning and support for young adults with disabilities.

Expanding Early Learning Through Inclusive Preschool Classrooms — \$5,000

Early childhood education is a critical foundation for future success. With a \$5,000 grant from CPCF, the district is enhancing its preschool program by purchasing gross motor equipment and early literacy supplies to benefit more than 220 children between the ages of 3 and 5. Students with disabilities are integrated into classrooms

alongside their general education peers, fostering a culture of acceptance and shared learning. Each classroom uses a play-based curriculum aligned with Indiana's Early Learning Standards, helping students explore topics like jobs, pets, and musical instruments while preparing for kindergarten.

Igniting a Passion for STEM at Every Elementary School — \$15,000

CPCF awarded \$15,000 to support the launch of STEM (Science, Technology, Engineering, and Math) education across all CPCSC elementary schools in 2024. Students in grades K–5 now explore coding through SAM Labs and engage in engineering challenges with Project Lead the Way. In just one semester, students completed over 31,000 coding projects—more than any other district in the nation. Every 2nd–5th grader now also works with VEX GO robotics kits, expanding access to hands-on learning that was previously limited to after-school clubs.



PHOTOS CLOCKWISE FROM LEFT: STUDENTS EXPLORE STEM CONCEPTS THROUGH A HANDS-ON FILTRATION EXPERIMENT / LOCAL STUDENTS PROUDLY DISPLAY THEIR COMPLETED CLASSROOM PROJECTS / COLLABORATING TO COMPLETE A CLASSROOM CHALLENGE, STUDENTS PUT TEAMWORK INTO ACTION / WITH GUIDANCE FROM THEIR TEACHER, STUDENTS DIVE INTO A CODING LESSON IN ELEMENTARY STEM.

Empowering Students with Disabilities Through Real-Life Experience — \$8,000

A grant of \$8,000 is supporting students with significant disabilities who continue their education through age 22. This program focuses on building life, social, and vocational skills in a supportive environment tailored to each student's needs. Equipment such as sensory panels, kitchen appliances, or communication devices are provided based on individual education plans (IEPs). Students also gain hands-on experience running a dog treat business and working with job coaches, helping them build independence and prepare for employment.

A Shared Vision for a Brighter Future

Each of these programs - preschool inclusion, STEM education, and transitional services - demonstrates CPCSC's commitment to meeting the diverse needs of its students. They also reflect the Crown Point Community

Foundation's belief that strategic investments in education can create ripple effects throughout an entire community. With continued support from partners like CPCF, Crown Point schools are not only preparing students for success—they're building a brighter future for all.

"The Foundation is proud to support these efforts," said Mary Nielsen, President of the Crown Point Community Foundation. "When we invest in students, we're investing in the future of South Lake County. From early learners to young adults preparing for the workforce, these programs help ensure every child has the opportunity to succeed."

WE ARE THANKFUL FOR THE SUPPORT OF THE CROWN
POINT FOUNDATION. WITH HELP FROM THESE GRANTS,
OUR STUDENTS HAVE MORE ACCESS TO OPPORTUNITIES
AND SERVICES THAT HELP THEM THRIVE.

DR. TODD TERRILL

SUPERINTENDENT
CROWN POINT COMMUNITY SCHOOL CORPORATION

Unrestricted Endowment Funds for Community Grants

Unrestricted Endowment Funds are created by donors who want to support a broad range of community causes and entrust the CPCF to allocate those funds to causes with the greatest need.

Alex and Ila Magiera Endowment Fund
Anthony & Carol Volattorni Memorial Giving Fund **(New Fund)***
Art Hill Ford/Lincoln Mercury/Carroll Chevrolet Endowment Fund
Bates Family Unrestricted Endowment Fund
Benjamin T. & Angela J. Ballou Unrestricted Endowment Fund
Bill & Betty Kennedy Family Endowment Fund
BJ & Kay Hubbard Endowment Fund
Bob and Bernice Anderson Endowment Fund
Cedar Lake Community Endowment Fund
Charlie and Marilyn Kaper Unrestricted Endowment Fund
Clayton Dyer Root Endowment Fund
Corbin Family Unrestricted Endowment Fund
Corey & Charlotte Liss Community Endowment Fund **(New Fund)***
CPCF Community Grantmaking Fund
Crown Point Community Foundation Fund
Daniel Reinhardt Root & Carol McInerney Root Unrestricted Endowment Fund
Darryl & Patricia Miller Endowment Fund
David & Helen Batusic Unrestricted Fund
Dean and Barbara White Unrestricted Endowment Fund
Dexter Family Endowment Fund
Dolores E. White Unrestricted Endowment Fund
Don & Alice Burrell Family Endowment Fund
Don and Joyce Carnahan Endowment Fund
Donald and Joyce Huber Family Endowment Fund
Donald and Theresa Cowan Family Fund
Dr. William and Ramona Jean Smead Family Fund
Edward G. and Katherine R. Gerlach Huber Memorial Fund
Edwin and Catherine Huber Family Endowment Fund
First Financial Bank Endowment Fund
Fran and Billie Hoffman Fund
Frank Mitch" Cueller Memorial Fund" **(New Fund)***
G.W. Gintert Family Fund
Geisen Family Endowment Fund
Gordon and Nina Bates Endowment Fund
Greg and Nancy Forsythe Christian Giving Fund
Heritage Quilters Fund
Hilary and Margaret Raab Fund
Howard Wise Endowment Fund
Jack & Diane Kemp Endowment Fund
Jeff and Linda Bryner Unrestricted Endowment Fund
Jim and Betty McDonald Endowment Fund
Jim and Kim Larsen Unrestricted Endowment Fund
Jimmy & Marian Hooseline Family Trust
Joe and Marian Jollief Unrestricted Endowment
John & Ann Barney Unrestricted Endowment Fund
John & Diane Burrell Family Endowment Fund
John and Maureen Rogers Unrestricted Endowment Fund
John Dockus Unrestricted Endowment Fund
Jon and Cindy Harts Family Endowment Fund
Joseph D. Nerney, Jr. Memorial Community Fund **(New Fund)***
Joseph K. Beckman Unrestricted Endowment Fund
Joseph L. and Maribel C. Costin Family Endowment Fund
Karen & Cornel Raab Unrestricted Endowment Fund
Karl F. Seger Endowment Fund
Letz Family Endowment Fund
Marge and Hugo Breuckman Fund
Marie Van Slyke Bean Endowment Fund
Mary and David Root Endowment Fund
Michael and Sherron Pampalone Endowment Fund
Otto Richard Fifield Memorial Endowment Fund
Peter & Betty Kolodziej Memorial Endowment Fund
Purdue Federal Credit Union Endowment Fund
Richard and Laura Sauerman Unrestricted Endowment Fund
Richard J. and Gwendolyn L. Buehler Endowment Fund
Robert and Joyce Nutt Unrestricted Endowment Fund
Robert W. and Karen J. Lynn Family Endowment Fund
Rouge Family Endowment Fund
Russell C. Westphal Family Memorial Fund
Schroeder Family Fund
Theodore L. and Tennessee E. Sendak Family Endowment Fund
Thomas H. Durant Endowment Fund
Tom and Kathy Liss Unrestricted Endowment Fund
Vern and Jeanne Segert Endowment Fund
Violet and Irvin Guritz Endowment Fund
Wellman Family Endowment Fund
White Family Fund
William and Maxie Scott Endowment Fund
William G. and Phyllis M. Fatch Fund

*No grants in 2024.

UNRESTRICTED ENDOWMENT FUND HIGHLIGHT

Theodore L. and Tennessee E. Sendak Family Fund



PHOTOS CLOCKWISE FROM LEFT: TIM AND PEGGY SENDAK PICTURED WITH THE VIBRANT FLOWERS ADORNING THEIR FRONT YARD / TIM IS THE SON OF THEODORE L. AND TENNESSEE E. SENDAK / PEGGY IS THE DAUGHTER OF WILLIAM G. AND PHYLLIS M. FATCH.

For nearly 35 years, Tim and Peggy Sendak have been deeply committed to the Crown Point Community Foundation (CPCF), playing key roles in its founding, growth, and ongoing impact.

A graduate of Crown Point High School, Tim earned degrees from Valparaiso University and Indiana University Law School. He maintained a private law practice in Crown Point from 1974 to 2022 and served in various civic roles, including Crown Point City Attorney and board member of the Lake Courthouse Foundation, Chamber of Commerce, and the local library. Tim co-founded the CPCF in 1989 and served on its Board for 20 years, including as Board President from 1995 to 1998.

Peggy, also a Crown Point High School alum, earned her education degrees from Purdue University and Purdue Northwest. She taught kindergarten and first grade for 25 years at Lawrence Elementary School in Indianapolis, and at Solon Robinson and Winfield Elementary Schools in Crown Point. Peggy served on the CPCF Gala Committee and was a founding member of the Women's Giving Circle, formerly Power of the Purse.

In addition to their service, Tim and Peggy have established three endowment funds with the CPCF. Tim created the Theodore L. and Tennessee E. Sendak Family Fund in memory of his parents in 2002, and Peggy established the William G. and Phyllis M. Fatch Fund in 2005. Both are Unrestricted Funds—designed to meet evolving community needs. “Unrestricted Funds are essential,” said Tim. “They allow the Foundation to respond where and when the need is greatest.”

Peggy also established the William G. & Phyllis M. Fatch Scholarship Fund in her parents' name, supporting students pursuing education degrees at Indiana state colleges. “Both of my siblings and I were teachers,” she shared. “It's incredibly meaningful when a student reaches out to say thank you.”

Now retired, the Sendaks enjoy spending time with their friends, family and children, and granddaughters on the west coast—continuing their legacy of giving and community spirit.

To learn more about starting or contributing to an Unrestricted Fund, visit thecpcf.org.

Community Grants Awarded

Distributions from the Unrestricted Endowment Funds provide grants to nonprofit organizations within the following categories to address the broad needs in the community.

\$627,012

Animal Related - \$20,000

Feline Community Network, Inc.
Humane Indiana, Inc.
The Humane Society of Hobart, Inc.

Arts, Culture - \$22,500

City of Crown Point
Julia Watkins Brass Chapter NSDAR
Northwest Indiana Symphony Society, Inc.
South Shore Arts, Inc.

Community Improvement - \$23,087

Bethel Church
Cedar Lake Historical Association
Second Life Resale Shoppe, Inc.

Economic Development - \$8,600

Indiana Plan for Equal Employment, Inc.

Education - \$52,828

City of Crown Point
Crown Point Community Library
Crown Point Community Schools
Crown Point High School - AP Test Funding
Dunes Learning Center
Franciscan Health Foundation
Hanover Community School Corporation
Junior Achievement of Chicago
Northwest Indiana Special Education Cooperative

Food, Nutrition, Agriculture - \$95,000

Community Help Network, Inc.
Meals on Wheels of Northwest Indiana, Inc.
Pack Away Hunger
St. Mary Catholic Church
St. Vincent DePaul Society
TradeWinds Services, Inc.

Health Related - \$51,833

Alzheimer's Association of Greater Indiana
American Cancer Society of Northwest Indiana
Franciscan Health Foundation - Northern Indiana
Jacob's Ladder Pediatric Rehab
Visiting Nurse Association of Porter County, Inc.

Housing, Shelter - \$25,000

Catholic Charities/Catholic Family Services

Human Services - \$166,039

Alpha Family Resale, Inc.
ANEW Ministries
Best Buddies Indiana
Cedar Creek Township Trustee
Center Township Trustee
Chasing Dreams
Eagle Creek Township Trustee
Erin's Farm NFP
Exceptional Equestrians Unlimited
First Presbyterian Church of Crown Point
Golden Hope Ministries, Inc.
Hanover Community School Corporation
Hanover Township Trustee
Hearts in Motion
Indiana Youth Group, Inc.
Momentum Church
Northwest Indiana Cancer Kids Foundation, Inc.
Opportunity Enterprises, Inc.
Phil's Friends
Pink Ribbon Society, Inc.
Power Paws for Kids, Inc.
REAL Services, Inc.
Ross Township Food Pantry
SAFE Coalition for Human Rights, NFP
South Lake County Agricultural Historical Society, Inc.
St. Michael's Church

Community Grants continued:

Veteran Impact Services, Inc.
dba Operation Charlie Bravo
West Creek Township Trustee
White's Residential & Family Services
Winfield Township Trustee

Public Safety - \$28,125

Cedar Lake Police Department
Town of Winfield

Recreation - \$103,500

Crossroads YMCA -
Southlake/Griffith/Hammond/Whiting Branches
Dean & Barbara White Southlake YMCA

Youth Development - \$30,500

Boys and Girls Clubs of Greater Northwest Indiana
Girl Scouts of Greater Chicago and Northwest Indiana
Girls on the Run Northwest Indiana
Pathway to Adventure Council,
Boy Scouts of America
Planting Possibilities
Youth for Christ of NWI

Field of Interest Funds Grants Awarded

Field of Interest Funds allow donors to address an area they care deeply about without naming a specific charity. The foundation grant committee awards grants to nonprofits that fit the donor's category of interest.

\$14,145

Community Literacy Endowment Fund
Help The Children Fund
Peg Shaffer Instrumental Arts Fund*
The Manis Family Fund

*No grants in 2024.



**HELP US LEAD, ENGAGE
AND ENRICH OUR COMMUNITY**



WHY WE GIVE: Geisen Funeral Home has been a part of the Crown Point community since 1867, when Peter Geisen added undertaking services to his furniture business downtown. We know the importance of providing the best service to our funeral families and to various local charitable organizations and programs. We want to make a difference to help our community flourish, as we have for over 150 years.

MISSION: We are dedicated to providing guidance, options and compassion with the highest level of standards and integrity. We will offer exceptional funeral and cremation services by our professional and caring staff. We will always strive to exceed the expectations of each family we serve.



Habitat for Humanity Women's Build:

Geisen staff members volunteered for a Habitat for Humanity Women's Build.



Veteran's Dinner:

Geisen Funeral Home hosts an annual Veteran's Dinner, a time-honored tradition at the Geisen Reception Centre in Crown Point.

Scholarship Funds Grants Awarded

Scholarship Funds are created by donors to invest in students' futures. Some scholarships help students from a particular high school or area; others provide financial assistance to those pursuing a specific field of study; still others assist students most in need. Donors are able to set the criteria for applicants.

\$457,960

Alec Matalin Memorial "Dope" Endowed Scholarship Fund
Alfred J. Gruber Senior Social Studies Honorarium Fund
Alvin & Kathryn Schmidt Endowment Fund*
American Italian Benevolent Society Endowment Scholarship Fund
Barbara Jenkins Tyler Speech Scholarship Endowment Fund
Barney Family Scholarship Fund
Bryan C. Niedert Memorial Scholarship Fund
Burrell Family Scholarship Endowment Fund
Caleel Foundation Scholarship Fund
Candace Lynne Walton Scholarship Endowment Fund
Celia C. Newcomb Memorial Scholarship Fund **(New Fund)**
Charles Hall & Beatrice Joy Kolar Scholarship Fund **(New Fund)**
Charles M. & Marjorie Quickle Memorial Scholarship
Christopher Day Memorial Scholarship Fund
Clayton Gaudry Memorial Scholarship Fund
Colonel John Wheeler Middle School Endowment Fund
Crown Point Community Foundation Scholarship Fund
Crown Point Lion's Club Scholarship Fund
Crown Point Swim Club Alumni Scholarship Fund
Crown Point Youth Baseball Scholarship Endowment Fund
David Gergely Memorial Scholarship Endowment Fund
Dean and Barbara White Scholarship
Dockus Charitable Scholarship Endowment Fund
Donald and Phyllis (Dillabaugh) Ross Purdue Scholarship Endowment Fund
Dorothy Dillman Max Scholarship Fund*
Dr. J. Robert Mayden Memorial Scholarship Fund
Dr. James W. Gentleman Memorial Scholarship Fund
Dwight D. Eisenhower Elementary PTO Scholarship
George Letz III Memorial Scholarship Fund
Gil and Gail Stiener Family Fund
Helen Zielinski & Ray Stuck Family Scholarship Fund
Isabelle Melchor Memorial Scholarship Fund*
Jerry A. Caravana Athletic Director Endowment Scholarship Fund
Jerry Ross Elementary PTO
JoAnne and Jim Haag Scholarship Fund

John D. Amodeo Scholarship Fund
Joseph & Evelyn Skora Memorial Scholarship Fund
Joseph N. and Annette M. Allegretti Fund
Karen & Cornel Raab Scholarship Fund
Karen Pruzin Scholarship Endowment Fund
Kathy, Russ, and Jim Keller Endowment Fund
Kay Hubbard Music Scholarship Award Fund
L. Jane Keene Memorial Scholarship Fund
Lake Street Elementary PTO Scholarship Fund
Law Enforcement Academy Fund*
Lisa Schaefer Stover Endowment Fund
Liss Carstar Scholarship Fund
MacArthur Elementary PTO Scholarship Fund
Manhart/Gibbons Family Memorial Endowment Fund
Marie Van Slyke Scholarship Fund
Marilee Thanholdt Memorial Fund
Marion Kellum Performing Arts Scholarship Fund
Mark and Lindsay Bates Scholarship Fund
Mark Edwards Scholarship Fund
Marty Shahbaz Football Scholarship Endowment Fund
Mary Gregory Geimer Memorial Scholarship Fund **(New Fund)**
Maurine M. Schlemmer Memorial Scholarship Fund
McMichael Family Endowment Fund
Mike Brown Jr. Memorial Scholarship Endowment Fund
Millicent & Forrest Everett Memorial Fund
Paul D. & Dorothea Everett Fund
Pete Breuckman Sr. Tradesman Scholarship Fund
Pettit Family Memorial Student Athlete Scholarship Fund
Ralph E. and Dee Bennett Scholarship Endowment Fund
Robert "Bob" Brown Scholarship Endowment Fund
Robert Taft Middle School PTO Scholarship Fund
Ronald & Suzanne Borto Scholarship Endowment Fund
Russ Keller Family Scholarship Fund
Shirley Mudy Scholarship Fund
Solon Robinson Elementary School PTO Scholarship Fund

*No grants in 2024.

Scholarship Funds Grants Awarded continued:

- St. Mary's Catholic Community School Scholarship
- Tim Galusha Memorial Scholarship Fund
- Timothy Ball Elementary PTO Scholarship Fund
- Timothy J. Grzych Memorial Scholarship Fund*
- "Tiny" Knesek Bohling and Karla Stiener Scholarship Endowment Fund
- Todd Szanyi Memorial Scholarship Endowment Fund
- Trinity Lutheran School Scholarship Fund
- Virgil A. Place Scholarship Fund
- Walter J. Bernacki Memorial Scholarship Fund
- Wilbert Buth Music Scholarship Fund
- William G. & Phyllis M. Fatch Scholarship Fund
- Winfield/Jerry Ross Elementary PTO Scholarship Fund
- Youche Country Club Scholarship Endowment Fund
- Zondor Family Scholarship Endowment Fund



<

THIS SCHOLARSHIP GENUINELY MOTIVATES ME TO CONTINUE DOING MY BEST WORK AND CHALLENGE MYSELF WITH RIGOROUS COURSES. I HAVE ALWAYS BEEN TOLD THAT HARD WORK DOES NOT GO UNNOTICED, AND THIS SCHOLARSHIP HAS REALLY PROVEN THAT TO ME. ALL THE SLEEPLESS NIGHTS AND ENDLESS HOURS OF STUDYING WERE ENTIRELY WORTH IT, AND I WOULD DO IT ALL OVER AGAIN KNOWING THE OUTCOME.

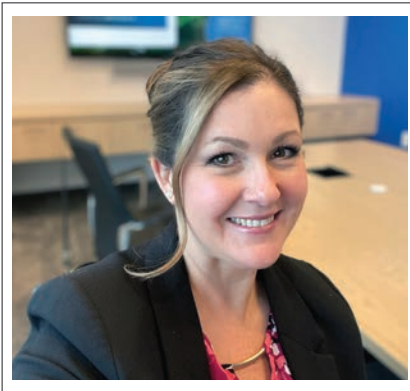
KALLIOPI SAKALEROS
DEAN AND BARBARA WHITE
SCHOLARSHIP RECIPIENT

>

THIS SCHOLARSHIP MEANS THE WORLD TO ME. AFTER A STRUGGLING START IN HIGH SCHOOL – MOVING TO A NEW TOWN DURING A PANDEMIC, NOT HAVING A FRIEND GROUP TO TALK TO ABOUT ANYTHING, AND GENERALLY FEELING LOST AT TIMES - I REALIZED HOW MUCH I LEARNED FROM THAT EXPERIENCE AND ABOUT THE COMMUNITY I NOW CALL HOME. CROWN POINT WAS A VERY WELCOMING COMMUNITY TO ME AND MY FAMILY. THIS AWARD IS PROOF OF THAT. I AM SO VERY THANKFUL FOR THIS AWARD.

THIS WILL HELP ME TO ACCOMPLISH MY GOALS, AND I WILL BE ABLE TO CREATE EVEN BIGGER GOALS FOR MYSELF NOW.

RILEY MCQUAID
DEAN AND BARBARA WHITE
SCHOLARSHIP RECIPIENT



<

I THINK THE COMMUNITY SETTING UP SCHOLARSHIPS FOR STUDENTS IS A BEAUTIFUL THING. THIS OPPORTUNITY PROVIDES MOTIVATION FOR HIGH SCHOOL STUDENTS TO BECOME HIGH ACHIEVERS WORTHY OF SCHOLARSHIPS, AND PROVIDES A TERRIFIC SENSE OF COMMUNITY.

REILLY LUSTINA
RECIPIENT OF THE
TRI KAPPA SCHOLARSHIP
AND THE YOUCHE COUNTRY
CLUB SCHOLARSHIP

<

THIS SCHOLARSHIP IS HELPING ME AS A ROLE MODEL TO MY CHILDREN, SHOWING THEM THAT EVEN AT MY AGE, ANYTHING IS POSSIBLE AND WITHIN REACH.

JENNIFER REISSMAN
CPCF WOMEN'S GIVING CIRCLE
SCHOLARSHIP RECIPIENT

**No grants in 2024.*

Designated Grants Awarded

Designated Funds are established by donors to benefit specific charitable organizations and purposes. Donors can identify an eligible charity to benefit.

\$247,435

Aameer Sahi Memorial Fund

Supports: Forest Ridge Academy, scholarship program.

Anthony Kinkade Foundation

Supports: St. Mary Catholic Community School, math and reading programs.

Beth S. Buoscio Endowment Fund

Supports: Timothy Ball Elementary School Art Department.

Betty Biegel Endowment Fund

Supports: St. Mary Catholic Community School, tuition assistance program.

Bieker Family Endowment Fund

Supports: 50% St. Mary Catholic Community School and 50% Community Grant making Fund which supports a broad range of community needs and causes.

Bill and Norma Rosenbower Courthouse Endowment Fund

Supports: Lake Courthouse Foundation.

Bob and Pat Turner Library Fund

Supports: Crown Point Community Library.

Charles and Mable Wise Swisher Courthouse Endowment Fund

Supports: Lake Courthouse Foundation.

Charles and Virginia Isley Endowment Fund

Supports: Crown Point Community School Corporation.

Chuck and Helen Sauerman Endowment Fund

Supports: Trinity Evangelical Lutheran Church.

Crown Point Aid & Relief Fund*

Supports: Financial assistance in emergency situations.

Dan & Vicky Klein Endowment Fund

Supports: Lake Courthouse Foundation.

David and Maria Hibbs Endowment Fund

Supports: Forest Ridge Academy.

Don and Joyce Gertz Endowment Fund

Supports: St. Mary Catholic Community School, tuition assistance program.

Don Hess Memorial Endowment Fund

Supports: Franciscan Alliance, Inc. Crown Point EMS Academy.

Dr. James M. and Mrs. Kathleen M. Rajchel Endowment Fund

Supports: St. Michael the Archangel National Catholic Church.

Dr. Jerry and Trish Allee Fund

Supports: Crown Point High School, Latin Club.

Dr. John P. and Helen M. Birdzell Community Fund

Supports on a rotating basis: Crown Point Fire Department; Meals on Wheels of Northwest Indiana, Inc.; Crown Point Community Library; Rotary Club of Crown Point; Crown Point High School Student Activities; First Presbyterian Church of Crown Point; Crown Point Babe Ruth Baseball League; St. Jude House, Inc.; Tri Kappa Sorority (Kappa Kappa Kappa, Inc., Gamma Theta Chapter); Crown Point Garden Club; and the Crown Point Police Department.

Edith Reinhardt Root Endowment Fund

Supports: Northwest Indiana Symphony Society, Inc.

Edna Mae Buckley & Merritt Buckley Old Courthouse Memorial Fund

Supports: Lake Courthouse Foundation.

George and Laura Wild Endowment Fund

Supports: Crown Point Community Library.

Hanover Schools Education Foundation Endowment Fund

Supports: Hanover Schools Education Foundation.

**No grants in 2024.*

Designated Grants Awarded continued:

Home Lumber Endowment

Supports: Mental Health America of Lake County Crown Point Parents as Teacher Program.

Ivy Tech Community College Foundations of East Chicago De La Garza Campus in East Chicago Endowment Fund

Supports: Ivy Tech Foundation, East Chicago De La Garza Campus in East Chicago.

James and Mary Ann Greiner Courthouse Endowment Fund

Supports: Lake Courthouse Foundation.

James and Sandra Niermeyer Family Endowment Fund

Supports: St. Mary's Catholic Church, needs for Church or School.

Jerry & Phyllis Keough Family Endowment Fund

Supports: Meals on Wheels of Northwest Indiana, Inc.

Jim and Marge Forsythe Courthouse Fund

Supports: Lake Courthouse Foundation.

Jimmy D. & Marian S. Hooseline

Supports: Salem United Methodist Church.

John & Catherine Peterman Endowment Fund

Supports: Northwest Indiana Special Education Cooperative.

John and Ann Barney Family Foundation Courthouse Endowment Fund

Supports: Lake Courthouse Foundation.

John and Maureen Rogers Fund

Supports: In-Pact, Inc. and Lake County Animal Adoption and Control Center.

John Cain Honorarium Arts Endowment Fund (New Fund)*

Supports: South Short Arts (for an annual named prize in honor of John Cain and financial support of the Salon Show exhibition of South Shore Arts).

Joshua Prunsky Memorial Endowment Fund

Supports on a rotating basis: Babe Ruth Baseball; Crown Point Junior Football; and Crown Point Little League Baseball.

June and Bernard Carstens Courthouse Endowment Fund

Supports: Lake Courthouse Foundation.

Kathleen Gleason Leurck Fund

Supports: The Crown Point Community Foundation Operating Endowment Fund.

Kegan Hall Memorial Scholarship Fund

Supports: Forest Ridge Academy, Scholarship in Memory of Kegan Hall.

Lake County World Wars Veterans Memorial Endowment Fund

Supports: Friends of the Veterans Memorial Parkway, Inc.

Manhart/Gibbons Family Memorial Endowment Fund

Supports: 50% to Northwest Indiana Symphony; 25% for scholarships to graduating high school students in the area of music; and 25% Community Grant making Fund which supports a broad range of community needs and causes.

Margarete B. and William H. Fifield Endowment Fund

Supports: Franciscan Health, Crown Point; Lake County Parks Department; and Crown Point Community Library.

Marilou Crisman Memorial Endowment Fund

Supports: Logansport Art Association, Inc.

Mary Govert Fund

Supports: Bethel Church for aid with aiding and assisting victims of domestic violence who reside, with small children within service area of CPCF, pay for rent and utilities for up to one year, renewable from year to year.

Norma N. Rosenbower Memorial Giving Fund

Supports: Alzheimer's Association of Greater Indiana; American Cancer Society of Northwest Indiana; American Red Cross of Northwest Indiana; Amvets - NWI Post, Cedar Lake; First United Methodist Church of Crown Point; First United Methodist Church, annual birthday luncheon; Food Bank of Northwest Indiana; Franciscan Health Foundation Northern Indiana; Habitat for Humanity of Northwest Indiana; Meals on Wheels of Northwest Indiana, Inc.; Mercy Home for Boys and Girls; National Foundation for Cancer Research; Northwest Indiana Symphony Society, Inc.; Pink Ribbon Society; Shirley Ryan Ability Lab (Rehab Institute of Chicago); St. Jude Children's Research Hospital; and Women's Giving Circle.

**No grants in 2024.*

Designated Grants Awarded continued:

Patrick and Daniel Doherty Fund

Supports: Cedar Lake United Methodist Food Pantry; Center Township Trustee, First Presbyterian Church of Crown Point; Food Bank of Northwest Indiana; Hobart Food Pantry; and Ross Township Food Pantry.

Peter and Mary Kucia Memorial Fund

Supports: St. Mary Catholic Community School, tuition assistance program.

Richard (Dick) & Myrene Gordon Fund

Supports on a rotating basis: Crown Point High School English Department and Northwest Indiana Special Education Cooperative.

Robert and Joyce Nutt Endowment Fund

Supports: Meals on Wheels of Northwest Indiana, Inc.

Ron and Diane Hall Endowment Fund

Supports on a rotational basis: Funds for each school in the Crown Point Community School Corporation.

Roselyn Trimble Family Endowment Fund

Supports: Paladin Inc/The Arc Northwest Indiana; St. Jude House, Inc.; St. Mary’s Catholic Church of Crown Point Food Pantry; St. Matthias Food Pantry; First Presbyterian Church Food Pantry; Holy Spirit St. Vincent DePaul Food Pantry; and St. Clare Clinic Food Pantry.

Schererville Parks Foundation Inc. Fund

Supports: Schererville Parks and Recreations Department.

Sharon James Endowment Fund

Supports: St. Jude House, Inc.

Stanley B. Lee Fund

Supports: Bethel Church, Benevolent Ministry - Aid and assist victims of domestic violence who reside with small children within service area of CPCF, pay for rent and utilities for up to one year, renewable from year to year.

Superior Petroleum Products Inc. Courthouse Endowment Fund

Supports: Lake Courthouse Foundation.

The Honor Endowment Fund

Supports: CPEMA Association, Inc.

The LaMere Family Endowment Fund

Supports: Provides tuition assistance to a St. Mary’s Catholic School student attending Andrean High School.

Tom and Kathy Liss Courthouse Endowment Fund

Supports: Lake Courthouse Foundation.

Trinity Lutheran Church-Lowell Fund

Supports: Trinity Lutheran Church, Lowell.

Vada Pinter Endowment Fund

Supports: Crown Point Community Library; Crown Point Fire Department; and Crown Point Police Department.

Visiting Nurse Foundation Fund

Supports: Meals on Wheels of Northwest Indiana, Inc., Haven House, Inc.; Lupus Foundation of America, Indiana Chapter; Centers for Possibilities; Franciscan Communities; and Sojourner Truth House.

Wilbert & Betty Buth Endowment Fund

Supports: Trinity Evangelical Lutheran Church, Trinity Cares program.

William and Mary Carroll Fund

Supports: Crown Point Police Department; Crown Point Fire Department; Crown Point Community Library; St. Matthias Church; and Franciscan St. Anthony Health, Crown Point.

Supports on a rotating basis: Crown Point Cal Ripken Youth Baseball; Crown Point Junior Bulldogs/Panthers; Crown Point Girls Softball League; and Crown Point Pups Basketball.

William C. and Jean Keehn Endowment Fund

Supports: First Presbyterian Church of Crown Point; Lake Courthouse Foundation; and the Crown Point Community Foundation Operating Endowment Fund.



With your help, families in South Lake County stay housed and have a sense of relief.

With the generous \$25,000 grant from the Crown Point Community Foundation, even more South Lake County residents are receiving support to remain in their homes and avoid utility disconnections during times of financial hardship.

Catholic Charities, a trusted community partner serving Northwest Indiana, is expanding the reach of its Safe Haven: Homeless Prevention Program to residents in Crown Point, Cedar Lake, Lowell, and Winfield thanks to this funding.

Rooted in compassion and dignity, Catholic Charities serves individuals and families regardless of religious or ethnic background, providing support for those experiencing crisis while also fostering long-term stability. The Safe Haven program plays a vital role in this mission by assisting low to moderate income households with up to three months of rental, mortgage, or utility assistance.

"This grant will allow us to serve approximately 50 South Lake County families," said LaShawn Jones-Taylor, Program Manager at Catholic Charities. "About 33 families will receive help with utility bills, while 17 will receive support to prevent eviction or foreclosure. These are real families, facing real challenges like rising rents, stagnant wages, and inflation. This program helps them remain safely housed and connected to their community."

Beyond financial aid, the Safe Haven program offers wraparound support services to help families regain stability and avoid future housing crises. By keeping families in their homes, the program strengthens entire neighborhoods by keeping children in school, supporting local businesses, and reducing residential turnover.



THANK YOU CPCF FOR YOUR
GENEROUS SUPPORT AND HELPING
OUR COMMUNITIES THRIVE.

LASHAWN JONES-TAYLOR
PROGRAM MANAGER, CATHOLIC CHARITIES

Donor Advised Funds Awarded

Donor Advised Funds allow the donor to make recommendations for their charitable choices. Each year the Foundation notifies the donor of their available distribution amount. The donor then recommends one or more eligible charities to receive the grant distributions.

\$96,165

Alan Jon “AJ” Roach Jr. Memorial Fund
Alec Matalin Memorial Endowment Fund
Angela M. Fealy Family Fund
Beverly M. Huber Endowment Fund
Bill and Norma Rosenbower Endowment Fund
Billy and Phyllis Walker Endowment Fund
Borto Family Fund
Brandon Aaron Huseman Memorial Endowment Fund
Carole and Jack Esala Endowment Fund
Charlie Scott Memorial Fund
Cindy and Ed Hall Endowment Fund
Corey & Charlotte Liss Family Endowment Fund*
Cornel and Karen Raab Donor Advised Endowment Fund
Crown Brick and Supply Endowment Fund
Crown Point Rotary Foundation Fund
Cuculich Family Endowment Fund
Dale and Terri Williams Family Endowment
Devitte Family Fund
Dominic and Nancy Vicari Family Fund*
Dr. Frederick and Mary J. Klepsch Family Fund
Edward A. and Clara R. Bapple Cedar Lake Endowment Fund
Eksten Family Endowment Fund*
Greg and Linda Armstrong Family Endowment Fund
Harold L. and Martha Wheeler Family Endowment Fund
Helen Zielinski and Ray Stuck Family Endowment Fund
Hub Bootery Fund
James & Irene Gentleman Family Endowment Fund
JoAnne and Jim Haag Endowment Fund
Johnston Family Endowment Fund
John Tubbs Family Endowment Fund
Jo Schweitzer Family Fund
Joseph and Jane Nerney Fund
Joseph P. & Ruth B. Schramm Endowment Fund
Joshua and Melissa Sickinger Endowment Fund
Kathleen and John Roeser Endowment Fund

Keith & Mary Nielsen Family Endowment Fund
Klebs-Sickinger Family Fund
Kristin M. Harts Endowment Fund*
Larry and Kimberly Geisen Endowment Fund
Marge & Melissa Kerr Endowment Fund
Marjorie Swallow Memorial Endowment Fund
Michael & Diane O’Brien Family Endowment Fund*
Patricia A. Huber Endowment Fund
Peter “Big Pete” and Lois Briggs Memorial Fund
Peterman Family Fund
R. F. Bieker Foundation
Richard and Laura Sauerman Endowment Fund
Robert and Peggy Ligda Endowment Fund*
Roger & Donna Pace Family Endowment Fund*
Ronald and Anna May Allee Endowment Fund*
Ryan William Lepak Memorial Fund*
Sheehy Remaly Family Fund **(New Fund)**
Sheehy Well Fund **(New Fund)**
Susan Driscoll Elder & Thomas A. Elder Fund
Ted and Lin Zapinski Endowment Fund
The Barney Fund
The Brigham Family Fund
Thomas and Faye Platt Family Endowment Fund
Tim & Cynthia Walsh Endowment Fund
Vieweg Family Endowment Fund*
Wayne A. Gruber Horticulture Fund
Women’s Giving Circle Fund

*No grants in 2024.

Agency Funds Awarded

Agency Endowment Funds are created by nonprofit organizations. Each year, distributions from the agency fund help support the operational and program needs of the nonprofit organization or are invested back into the fund for continued growth.

\$226,480

Campagna Academy Endowment Fund
Cedar Lake Historical Association Endowment*
Challenger Learning Center of Northwest IN Inc. Endowment Fund
Crossroads YMCA
Crown Point Community Library Endowment Fund*
Crown Point Community Schools Endowment Fund
First Presbyterian Church Endowment Fund
First United Methodist Church of Crown Point Endowment
Forest Ridge Academy Endowment Fund
Franciscan Sisters of Chicago Service Corporation Fund
Good Samaritan Endowment Fund
Habitat for Humanity of Northwest Indiana Endowment Fund
Indiana Ballet Theatre NW, Inc. *
John Kern Fund*
Lake Court House Foundation Endowment Fund
Masonic Temple Association Endowment
Meals on Wheels of NW Indiana Endowment Fund
Northwest Indiana Special Education Coop Endowment Fund
Northwestern Indiana Nursery and Landscaping Endowment Fund
Oktober Committee Museum Endowment Fund
Old Sheriff's House Gladys Harmack Forgey Endowment Fund
Shrine of Christ's Passion Endowment Fund

Solon Robinson PTO Endowment Fund
South Shore Arts Endowment Fund
Southlake YMCA Endowment Fund
St. Anthony Medical Center Fund
St. Jude House Endowment Fund
St. Mary Catholic Community School Endowment Fund
The Arc Northwest Indiana
The Women's Center of Northwest Indiana Endowment Fund
Tri Kappa, Gamma Theta Chapter Endowment Fund
Tri-Creek Education Foundation Fund
Trinity Evangelical Lutheran Church Fund
University of St. Francis, Crown Point Endowment Fund
White's Residential and Family Services
Winfield Community Foundation, Inc. Endowment Fund
Wittenberg Lutheran Village Endowment Fund

**No grants in 2024.*





LILLY ENDOWMENT INC. GIFT VIII

TWO MATCHING OPPORTUNITIES REMAIN

In October 2023, Lilly Endowment Inc. launched Phase VIII of its Giving Indiana Funds for Tomorrow (GIFT) initiative, committing up to \$210 million to support Indiana's community foundations. This new phase focuses on three primary goals: strengthening the long-term financial sustainability of foundations, enhancing leadership capacity, and advancing strategic initiatives that improve quality of life across Indiana communities.

As part of this ambitious initiative, Lilly Endowment designated \$135.3 million for Matching Fund Grants, empowering community foundations to grow their unrestricted assets, expand internal capacity, and address local needs through innovative projects and programs.

The Crown Point Community Foundation (CPCF) was awarded **\$1,875,000** in Matching Fund Grants. In response, CPCF introduced four Matching Challenge Opportunities designed to elevate its impact across South Lake County. These opportunities are a direct reflection of the Foundation's long-term strategic vision—one rooted in flexibility, sustainability, and a deep commitment to meeting both current and emerging needs in the community.

As of this update, two matching opportunities remain active. These funds support initiatives that respond to urgent community needs while also strengthening CPCF's operational future and the capacity of local nonprofits.

Remaining Match Opportunities:

Operating Fund – General CPCF Fund

\$1 for \$1 Match Opportunity! - \$187,500 in available funds
Only \$21,537 Remain in Available Funds! (As of 7-30-25)

Symphony on the Lawn Project Fund

\$1 for \$1 Match Opportunity! - \$40,000 in available funds
Only \$4,807 Remain in Available Funds! (As of 7-30-25)

Completed Match Opportunities:

CPCF Community Grantmaking Fund or any unrestricted fund

\$2 for \$1 Match Opportunity! - \$1,500,000 in available funds
Match Completed. Thank You.

CPCF Nonprofit Capacity Building Programs

\$1 for \$1 Match Opportunity! - \$147,500 in available funds
Match Completed. Thank You.

"We're honored to participate in the next chapter of the GIFT initiative," said Mary Nielsen, CPCF President. "Lilly Endowment's generous support means that every dollar our donors contribute can now have an even greater impact."

The Match Timeline is October 1, 2023 - December 31, 2025 or until the funding has been expended.



PHOTOS CLOCKWISE FROM LEFT: THE CARING CLOSET IS FULLY STOCKED AND READY TO SUPPORT LOCAL STUDENTS / STUDENTS SELECT SUPPLIES FROM THE CARING CLOSET TO MEET THEIR EVERYDAY NEEDS / A GROUP OF STUDENTS PREPARES TO VISIT THE CARING CLOSET AND GATHER ESSENTIALS.

With your help, students show up ready to learn.

A CPCF grant for \$3,050 was awarded to Hanover Community School Corporation's Red Cedars Social Work Department to support a growing program called the Caring Closet.

Hanover Community Schools serves students at both Red Cedars and Jane Ball Elementary in Cedar Lake, Indiana. Through the Caring Closet, school social workers ensure students and their families have discreet and consistent access to food, personal care, and household essentials. By meeting these basic needs, the program empowers students to focus on learning instead of daily survival.

This year, the program expanded to an additional school within the district, increasing its reach and impact. More than 1,000 students and their families benefited from access to snacks, hygiene products, and pantry staples—items that help students feel confident, supported, and ready to learn.

The Caring Closet has also strengthened the school community. Teachers now have a reliable way to address student needs, and families no longer have to rely on outside programs that may be difficult to access. With support from the Crown Point Community Foundation, the Caring Closet is removing barriers to education and helping students thrive in and out of the classroom.

It's more than just meeting basic needs. It's about creating a learning environment where every child feels seen, supported, and empowered to succeed.



WHAT A GREAT INITIATIVE! WHEN BASIC NEEDS ARE MET, EVERY CHILD HAS A BETTER CHANCE TO THRIVE.

NICOLE BRIDGES

DEAN OF STUDENTS & INSTRUCTIONAL COACH,
RED CEDARS UPPER ELEMENTARY

Operating Sustainability Funds

It is the mission of the CPCF to enable donors to give back to our community by establishing various types of funds. We offer these services through a small but efficient staff and a business plan that maximizes efficiencies while reducing cost. Operating Sustainability Funds support the day-to-day operations of the CPCF.

\$142,981

Ann & John Barney Operating Endowment Fund
Beckman Family Operating Endowment Fund
Bruce & Betty Fleming Operating Endowment Fund
Carsten and Georgia Falkenberg Operating Endowment Fund
Centier Bank Operating Endowment Fund
Charles W. and Mable Wise Swisher Operating Endowment Fund
Chase Operating Endowment Fund
Circle Restaurant Operating Endowment Fund
City of Crown Point Operating Endowment Fund
Cornel and Karen Raab Operating Endowment Fund
Darryl & Patricia Miller Operating Endowment
David & Helen Batusic Operating Endowment Fund
Ed and Leona Luke Operating Endowment Fund
Gil and Gail Stiener Operating Endowment
Greg and Nancy Forsythe Operating Endowment Fund
Harold L. and Martha Wheeler Operating Endowment Fund
Harris N.A. Operating Endowment Fund
Hooseline Family Operating Endowment Fund
John and Cathy Peterman Operating Endowment Fund

Joseph and Jane Nerney Operating Endowment Fund
Joseph N. and Annette M. Allegretti Operating Endowment Fund
Kathleen and Anthony Zdanowicz Operating Endowment Fund
Ken and Helen McEntire Family Operating Endowment Fund
Ken Homeier Family Fund
Lake Court House Foundation, Inc. Operating Endowment Fund
Marge Brady Kerr, in memory of JW Kerr, Jr. Operating Endowment Fund
Matt and Sandy Bapple Operating Endowment Fund
Mike & Karen Dexter Operating Endowment Fund
Operating Endowment Fund-Crown Point Community Foundation
Paul Martin Leurck Fund
Ray and Bernice Liss Family Operating Endowment Fund
Richard and Josephine Schweitzer Family Fund
Ronald W. & Suzanne M. Borto and Family Operating Endowment Fund
Southlake YMCA Operating Endowment Fund
St. Anthony Medical Center Operating Endowment Fund
Virginia and A.D. Luers Operating Endowment Fund
White Family Operating Endowment Fund
William Bixenman Operating Endowment Fund

WAYS TO GIVE FOR TODAY AND TOMORROW

- 1. **Cash/Checks** - Cash donations can be made by mail, dropping off at our office, or online.
- 2. **Stocks or Securities** - The Foundation has the ability to accept gifts of publicly traded stocks.
- 3. **IRA Distributions** - Qualified Charitable Distributions can be made directly to the Foundation from your IRA custodian, reducing taxable income (*Distributions cannot be directed to a Donor Advised Fund*).
- 4. **Wills and Bequests** - Talk with your attorney and name the Crown Point Community Foundation as a beneficiary of all or a portion of your estate. Please use the following wording - "I give or bequeath to the Crown Point Community Foundation, 115 S. Court St., Crown Point, Indiana % or the sum of \$ of my residuary estate."
- 5. **Life Insurance** - You can designate all or a portion of your life insurance policies, potentially saving Indiana inheritance tax and federal estate taxes.



SCAN QR CODE TO
DONATE TODAY.



PHOTOS CLOCKWISE FROM LEFT: A CHASING DREAMS VOLUNTEER LENDS A HELPING HAND DURING CAMP ACTIVITIES / CPCF PRESIDENT MARY NIELSEN CONNECTS WITH CAMPERS AND THEIR FAMILIES DURING A VISIT / CAMPERS GET CREATIVE DURING A FUN-FILLED CRAFT SESSION / CHASING DREAMS PRESIDENT AND CEO DENISE BABJAK OFFERS WORDS OF ENCOURAGEMENT TO A YOUNG PARTICIPANT.

With your help, individuals with disabilities expand their opportunities.

Thanks to a recent \$5,700 grant from the Crown Point Community Foundation, more individuals with disabilities in South Lake County are gaining the tools they need to thrive. Chasing Dreams, a local nonprofit based in Hobart, was awarded the grant to help expand its transformative summer camp program designed to promote independence, confidence, and community integration for youth and adults with disabilities.

Chasing Dreams supports individuals from birth through adulthood with a wide range of programs that address educational, social, and life skill development. By involving families in the learning process, the organization helps ensure participants receive well-rounded, lasting support.

The Chasing Dreams Summer Camp is a cornerstone of their work. Designed for individuals ages 5 and older with various disabilities,

the camp focuses on developing key life skills including cooking, using public transportation, practicing personal hygiene, building emotional awareness, and navigating social situations. Campers engage in hands-on experiences that promote leadership, physical activity, and community engagement.

"Each day of summer camp is carefully planned with lesson objectives to help participants grow in independence and self-reliance," said President and CEO Denise Babjak. "By the end of the summer, families receive an individualized progress assessment along with tools to continue learning at home."



THE IMPACT IS FAR-REACHING.
WE'RE NOT ONLY HELPING PARTICIPANTS
BUILD LIFE SKILLS, WE'RE ALSO
CONTRIBUTING TO A STRONGER,
MORE INCLUSIVE COMMUNITY.

DENISE BABJAK
PRESIDENT AND CEO
CHASING DREAMS



PHOTOS CLOCKWISE FROM LEFT: THE CROWN POINT COMMUNITY FOUNDATION PROUDLY PRESENTS A GRANT CHECK TO ALPHA FAMILY RESALE. PICTURED FROM LEFT TO RIGHT: CPCF BOARD MEMBERS SHANNON SHEEHY, PAM SEAMAN, AND JENNIFER LINSLEY; ALPHA FAMILY RESALE PRESIDENT LUISA GOMEZ REYES; ALPHA FAMILY RESALE TREASURER TIM KOEDYKER; CPCF BOARD MEMBER DEAN JONES; CPCF PROGRAM & ENGAGEMENT OFFICER KATIE SLY; AND CPCF PRESIDENT MARY NIELSEN / A WIDE SELECTION OF CHILDREN'S TOYS IS AVAILABLE FOR LOCAL FAMILIES TO ENJOY / SHOPPERS CAN BROWSE THE RACKS FOR STYLISH, GENTLY-USED CLOTHING.

With your help, even more families in South Lake County are receiving help when they need it most.

A \$12,000 grant from the Crown Point Community Foundation was awarded to Alpha Family Resale, a resale shop in Winfield, to support its growing Gift Card Program for families facing financial hardship.

Founded by Tim Koedyker and Luisa Gomez Reyes, Alpha Family Resale provides high-quality donated clothing and household items at reduced prices in a respectful, welcoming environment. But it's their Gift Card Program that has become a lifeline for many.

"We quickly realized that even our discounted prices were still out of reach for some," said Tim. "So we began offering gift cards—free of charge—to local families in need."

Through partnerships with the Winfield Township Trustee, Center Township Trustee, local churches, schools, and shelters, Alpha Family Resale distributes reloadable gift cards that allow families to shop at no cost—while still choosing the items they need, just like any other customer.

Thanks to the Crown Point Community Foundation grant, Alpha Family Resale was able to expand this program to more families across the region. The grant supports gift cards for 55 additional local families. Each card is preloaded with \$50 and refilled monthly with \$25, allowing families to shop with dignity and flexibility.

"This project allows us to serve more people, including those struggling with clothing insecurity," said Tim. "Some families are choosing between buying food, paying for gas, or purchasing basic necessities. These cards make a real difference."



PHOTOS CLOCKWISE FROM LEFT: CPCF BOARD MEMBER JENNIFER LINSLEY EXPLORES THE STORE'S BOOK SELECTION / ADDITIONAL TREASURES AWAIT IN THE FRONT DISPLAY CASE / THE HOME GOODS SECTION OFFERS SOMETHING FOR EVERYONE - SURE TO BRIGHTEN ANY SPACE / THE ALPHA FAMILY RESALE LOCATION FEATURES A VARIETY OF SIZES AND STYLES FOR ALL AGES.

The store accepts donations of clothing and small household items, which are sorted and offered at very affordable prices. Alpha Family Resale's inventory includes clothing for all ages, shoes, accessories, dishes, cookware, small appliances, and more. Every shopper, whether using a gift card or cash, is treated with warmth and kindness.

"Some people ask why they feel different when they come into our store," Luisa said. "We tell them it's because of the first part of our name—Alpha—it means God. This store is a place of love and hope."

The Gift Card Program has grown steadily since its launch in August 2023, now distributing over \$2,000 in monthly gift card value through community partners. Their goal is to grow that support to \$3,000 each month—offering even more families a chance to shop with dignity and ease financial strain.

"It was clear from our visit to the Alpha Family Resale Store that giving back to the community is their passion," said CPCF Board Member Shannon Sheehy. "Their store is bright, well-organized, well-stocked, and a fun place to shop. It is rewarding to see the funds raised by the Foundation going to such a worthy cause."

Because of the CPCF grant, more families now walk into Alpha Family Resale not just in search of items—but in search of dignity, hope, and the reminder that their community cares.



ALPHA FAMILY RESALE'S DONATION OF SHOPPING CREDITS TO INDIVIDUALS IN NEED OF CLOTHING AND HOUSEHOLD ITEMS REFLECTS THEIR DEEP COMMITMENT TO MAKING A POSITIVE IMPACT IN THE COMMUNITY.

PAM SEAMAN
CPCF BOARD MEMBER

Donors

A

360 Fit, LLC
Julie Abedian
Mary Ann Abraham
Kathleen Adams
Suzanne Adler
Jessica Pettit Albaugh
Dr. Jerry & Trish Allee
Joseph & Annette Allegretti
Franciscan Alliance
Trish Alt
Amodeo Properties,
Rick & Cathy Amodeo
Joseph & Lori Amodeo
John W. Anderson Foundation
Linda Anderson
Thomas & Kathryn Anderson
Jon & Monica Anderson
Dave & Gail Andre
Arley Blair Insurance and Financial
Greg & Linda Armstrong
Venanzio and Shannon Arquilla
Assurant Global Automotive/Assurant Foundation
Away Hunger Pack

B

Frank Baccino
Kenneth & Rita Backe
Michael Bafia
Robert & Janet Bailey
Irene Bairaktaris
Lori Baldwin
Benjamin & Angela Ballou
Jeffrey & Roxanne Ban
Matt & Sandy Bapple
Jim Barcinski
Barney Family Foundation
John & Ann Barney

Daniel Basarich
Denise Bashore
Mark & Lindsay Bates
Lori Bathurst
David & Helen Batusic
Jon Beasley
David & Jill Beckham
Gerrie Beckman
Ralph Bennett
Kelly Bermes
Bryan & Mary Bernacki
Laura & Tom Bertagnolli
Timothy Bianco
John & JoAnn Birdzell
Nancy Bishop
The Bjorklund Family
Blade Cutters II LLC
Ann Blanco
Debby Blum
Megan Bobay
Joel Boomsma
Scott & Janet Bordui
Bethany Borgo
Suzanne Borto
Ralph & Dottie Bosetti
Lori & Bret Botkin
David & Heide Boutell
Gregory & Kellie Bowers
Robert & Barbara Bowers
Sandra Noe Braccolino
Lisa Bratton
William Breyfogle
Indira & Gary Brigham
Jeanne Brock
Jim & Jill Brown
Sam & Sheila Brune
Dr. Raymond and Carol Bucur
Robert & Barbara Budgin

Gretchen Burdan
Brett & Carol Burkholder
John and Deborah Burnett
Donald & Alice Burrell

C

Juliana Caffarini
John Cain
Lisa Cameron
Caravana Living Trust
Lynn Cartwright
Tenney and Charlie Cassell
Penelope Castor
Lisa Cavanagh
Cedar Lake Girls Softball
Centier Bank Corporate Centre
Challenger Learning Center of Northwest Indiana, Inc.
Raymond Chapala
Katherine & Fred Chariton,
KBCPA, Accounting & Computer Service
Dreams Chasing
Mark & Chrisanne Christ,
Site Restoration Services
Jonathon & Tina Christiansen
Catherine and James Cicchiello
Teresa Ciesielski
City of Crown Point
Glenn & Margot Clark
Ryan & Linda Collier
Colonel John Wheeler PTA
Community Help Network, Inc.
Wendy Conway
Ida Cooper
Laurence & Susan Costin
County Historical Society Museum Lake
Kevin and Darlene Cowan
CP Coworking
Crown Point High School

Crown Point Lions Club, Inc.
Crown Point Rotary
James Crisman
Crown Point High School Theatre Booster Association
Crown Brick & Supply, Inc.
Barbara Cueller
Marian Cunningham
Christine Curiel
Bryce and Stephanie Currie
Gloria Currie
Joseph & Gayle Czarnik

D

Frances Danek
Andy Darling
Michael Daugherty & Donna Sapone Daugherty
Pastor Joyce Davis Gap
Heather Dawson
DCMM, Inc.
D&D Napa
Troy & Ariel DeBaun
Suzanne Demmond
Deny Machine Shop
Stephen & Susan DeRolf
Mike and Karen Dexter
Gordon & Mary Joan Dickson
John & Louise Diederich
Gary & Marie Dienes
Eric & Robin Dillon
Dan DiTola Insurance, Inc.
Dr. Raymond & Donna Doherty
Patrick and Shirley Donely
Joseph and Kim Doolin
Douglas MacArthur PTO
Carol Drasga
Craig & Janet Duchossois
Michelle Duffy
Dan & Alison Duncan

E

Mark & Mary Edwards
Linda Eisenhower
Eisenhower School PTO
Nancy & Frank Eksten
Thomas Elder & Susan Driscoll Elder
Eley-Graham-Austgen Financial Advisory Services
Ryan Elinkowski
The Engine Room
Equestrians Unlimited Exceptional
Eythelbelle Hoffman Family Trust

F

W.E. Fairchild
Family Resale Alpha
Charlotte Fedorchak
Marta & James Fetterman
First Financial Bank
Mary Flynn
Sharon L. Foreman
William Forgey
Shirley Forney-Bates
Greg & Nancy Forsythe
Scott & Maureena Foster
Franciscan Health Crown Point
George & Jacqueline Frank
Jennifer Frazier
Ronald & Marian Fricke
Friends of Emily
Mariann Frigo

G

Aimee Gabbert
Greg Galusha
Julie Gardner
The Garnier Family
Martha, Chris & Bethany Garretson
Jim Geimer

Gigi & George Geimer-Messler
Geisen Funeral Homes
Anthony & McKenzie Geisen
Irene Gentleman
Timothy & Cheryl Gericke
Russ & Margie Gertsch
Joyce Gertz
Barb Gillian
Girl Scouts of Greater Chicago Northwest Indiana
Girls On The Run Northwest Indiana
The Glick Family Foundation
The Golden Girls from St. Anthony's
Diane Gora
Gerry & Dawn Gora
Gregory & Diane Gordon
Joseph Granger
John and Susan Graun
Dewayne Gray
Robert & Diane Greaney
Dan & Kim Greco
Sharon Gremel
Sean & Jillian Grennan
Emily Gronli
Karen Grzych
Gurley Leep Automotive Family
Stephen & Letitia Gustas

H

Mary Jo Haas
Michael & Tracy Hadt
Joe & Judi Hahn
Valerie Dussich-Hall & Kevin Hall
Cindy Hall
Law Offices of Karl E. Hand, P.C.
Matthew & Lisa Hanlon
Hanover Schools Education Foundation
Crystal Harrigan-Barry
Robert & Nadean Hartman

Donors

Dr. Janell Harvey
Haven RCC Fair
Health America of Lake County Mental
Elaine Hein
Margaret Helders
Dr. Jon & Janis Hendrix
Federated Hermes
Cathy Hicks
Steve & Carol Highsmith
Atty Thomas Hoffman
Gregory & Rochelle Hoffman
Anna Holem
Robert & Louise Hooper
Chuck & Darlene Hopp
Arliss Hove
BJ Hubbard
Donald & Joyce Huber
Patricia Huber
Nicole Hummel
Andrea Lauren Hunt
Huntington National Bank
Emma Hutchings
James Hutton
Gary and Kathryn Huys

I

Indiana Ballet Theatre Northwest, Inc.
Indiana Plan for Equal Employment, Inc.
John Isley

J

Nancy Jackson
Michael James
Margaret Jancovich
Jeff and Diane Reimer
SLP Comercial & Janitorial,
Sara Ybarra-Jimenez
Jim, Peggy, Ed & Joanne
Dotty Johnson

Eric & Tara Johnston
Jonathan & Margaret Jollief
Ashlee Jones
Sara Jones
Taylor Jones
Josam Company

K

Judith Kaleta
Kappa Kappa Kappa, Inc.,
Gamma Theta Chapter
Steve Kash
Eli Katich
Janet Katich
Gus & Michelle Katsaros
Brett Keeler
Paula Keller
Jeffery & Deborah Kelley
Dawn Kelly
Jack & Diane Kemp
Dawn Kepshire
Tamra Kepshire
Marge Kerr
Melissa Kerr
Susan Kerr
Southlake Kia
Heather Killion
Lowell Killion
Kingdom Housing
Jim Kirk Family
Karen Kish
Jeanie Kish
KJK Real Estate, Inc.
Leslie Klauk
Dan & Vicky Klein
Mary Jo Klepsch
Jackie Knight
Gretchen Knock

Lisa Koester
Glenn Kohlmeier
Charles Kevin & Kelly Lynn Kolar
Bill & Deb Kolloway
Megan Konrady
Tina Kottka
Eileen Kounios
Tracy Kowalczyk
Susan and Mark Koza

L

Nancy Laabs
Jeff & Jean Lahm
Lake Central Transportation,
Bus Drivers & Aides
Esther E. Lambert
Mary Jo Lane
Foundation of LaPorte County Unity
Jim & Kim Larsen
Brian and Ellen Larson
Gail Larson
David & Rona Lasser
Michelle Lawalin
Judith Lazar
Nancy Lear
Legacy Foundation, Inc.
William Lepak
Steve & Kathy Lessner
Jeanene Letcher
Sharon Letz
Stephen & Kathy Leurck
Mitzi & Kenneth Levander
Levin Tire Center of Crown Point, Inc.
Maryanna Lewis
Randy & Mary Jane Lewis
Thomas Leyden
LGS Plumbing
Peggy Ligda
Roger & Mariellen Liggett

Lilly Endowment, Inc.
 Jennifer Linsley
 Liss Body & Paint Center
 Liss CARSTAR Collision Center, Inc.
 Corey & Charlotte Liss
 Tom & Kathy Liss
 Litehouse WFG Hobart, Inc.
 To-A-Tea Corp/Little Italy Dyer
 Karen Lockwood
 LOFS Women's Golf Assoc.
 Jonathon Lohman
 Bob & Cinta Lowe
 Frank Lowry
 Bob & Susan Lueder
 Marko Lukic
 Robert & Karen Lynn

M

Kaelyn Macuga
 John Manis
 Dale & Ruth Ann Marino
 Kala Maske & Family
 Suzie Matalin
 Eugene & Linda Matzat
 Lauren & Joshua Mauk
 Nancy Mauman
 McAleer and Gall Dentistry
 Walter & Margaret McCarthy
 Robert & Pamela McDonald
 James & Phyllis McDonald
 Helen McEntire
 McMahan & Assoc.
 Terry & Karen McMahon
 David & Darlene McMichael
 John McMichael
 Jill Marie Mcnamara
 Lisa Mctighe
 Jacklyn Mead

Ron & Janet Mesarch
 Darryl & Pat Miller
 Sharon Miller
 Dean & Sara Jones,
 Mirar Development
 Mark and Karen Mitcheltree
 Mommy's Haven
 Alyssa & Alan Monix
 Morgan Distributing, Inc.
 Dawson & Brenda Morgan
 Robert & Anita Morris
 Kevin & Michele Morse,
 Morse Realty & Consulting Services
 Barbara Muckel
 Bonnie Muir
 Thomas & Janet Murray
 Kevin & Janel Myers

N

Judy Nack
 Allan & Sally Nalbor
 Joseph & Jane Nerney
 New Leash on Life
 Bill & Kasha Newcomb
 Donald Newcomb
 Jeffrey Newcomb
 Jim Newcomb
 Ronald & Nancy Newcomb
 The Nickla Group, LLC
 Stacy Niedert
 Keith & Mary Nielsen
 NiSource Charitable Foundation
 NWI No Child Hungry, Inc.
 The Nondorf Family
 Tom & Marie Novotny
 Nicole Nowicki
 Joyce Phipps Nutt
 NWI Bars LLC



HELP US LEAD, ENGAGE
 AND ENRICH OUR COMMUNITY



WHY WE GIVE: Centier Bank strives to ensure that the quality of life for all who live and work in our communities is a top priority. Through corporate dollars, volunteerism, and financial education, we consistently aim to make a greater impact in our communities. Centier has preserved hometown banking since 1895, and promises to continue that legacy for generations to come.

MISSION: Indiana's largest private, family-owned bank is a testament to the idea that no matter how large a business grows, it is still possible to provide remarkable service. This comes naturally to Centier associates because of our servant heart culture. We have come to be known for warm, personalized service and relationship-style banking. Centier Bank's commitment to community means neighbors are serving neighbors, working together to create a better way of life today and for future generations.



Member
FDIC www.centier.com

Centier Bank and our Associates
 are dedicated to the communities
 we serve across Indiana.

Donors

O

Diane O'Brien
Kathy O'Brien
Trent O'Brien
Thomas & Sue O'Brien
O'Reilly Auto Parts
Amy Kay Obrien
Richard & Bette Oesterle
Jody Ohm
Open Hearts

P

Donna Pace
James & Kimberly Packard
Larry & Sandra Palmiter
Michael & Sherron Pampalone
Richard & Marjorie Pankiewicz
Jeff and Julie Pape
Linda Pasternak
George C. Patrick & Assoc., P.C.
Alvin & Georgene Paulauski
Dakota Pawlicki
Lara Pelton
Michael & Valerie Pennanen
Peoples Bank,
Ben Bochnowski
Jeffrey Perz
Pete & Sons Auto Repair, Inc.
Sandi (Sarnicki) Petee
Donn & Linda Peterson
Jack & Karin Pettit
Phil & Son Security
Possibilities Planting
Faye Platt
Mark Platt
Max Platt
Mark & Linda Plewniak

LGS Plumbing
Joani Polzin
Joseph E Pope
Thomas G. Pruzin
Mark A. Psimos
Public Media Lakeshore
Robert & Barbara Punak
Puntillo and Crane Orthodontics, PC

Q

Lynnie Ques

R

R. Bar & Grill
Marilyn and Allen Rakestraw and families
Beth Rechlicz
Tom Platt & Uta Rehm
Nancy Mosquela, Rosemarie Dubrovich,
Keith Chiavetta, Al & Bunny Hewlett, Connie Rettig
Mark & Sue Riester
Timothy Rodda
John & Kathleen Roeser
John Rogers
Daniel & Carol Root
Brent Rosenbower
William Rosenbower
Jerry Ross PTO
Matthew Rouge
Lisa Rouhselange
Susan Rouse
Atty Joe & Mary Kay Rowe

S

Joseph & Carol Sanders
Deanne K Sasser
Dick & Laura Sauerman
Tulsi & Kamini Sawlani
Gerald & April Schaefer

Schepel Buick - GMC
Linda Schorlin
Michael & Jill Schrage
Wendy Schreiber
Bridget Schroeder
Robert & Karen Schrum
Kristen Schwerha
Pete & Natalie Schwinkendorf
Pamela & John Seaman
Phil Seaman
Semko Law Office LLC
Geraldine Semmer
Tim and Peg Sendak
Peg Shaffer
Geraldine Shaw
Sheehy Well & Pump Co., Inc.
Vic & Jewell Sheldon
Robert & April Shoemaker
Josh & Melissa Sickinger
Richard & Lucille Sikora
Ron & Deb Simko
Martha Simmons
Pravit & Pornpimon Sinchai
Geoffrey Slaughter
Kenneth & Marlene Sledz
Steven A Sly
Laura Small
Snowmobile Charity Ride Fundraiser
Solon Robinson PTO
Bonnie Soltesz
Sharon Sondgerath Cyganowski
Tammie & Philip Sopczak
South Lake Medical Realty, LLC
Gary Sportsmen Club & Bob,
Nada & Romanov Family
Carl & Diane Sprehe
Nikki Srbinoski
Allen & Linda Sredzinski

St. Anthony Home
St. Jude House
St. Mary Catholic Community School
St. Mary Home & School Association
Morgan Stanley
Mary Steele
Thomas P Stefaniak
Jim and Nancy Steuer
Sandra Stevens
Gilbert & Gail Stiener
Amy Boerger & Brad Stinebring
Vicki Stojkovich
William & Bonnie Stoloski
Suellen Stookey
Strack & VanTil Charity Foundation, Inc.
Thomas & Sharon Strbjak
R. Steven Sutton
Richard Sweeko & Judy Hartz Sweeko
David & Sally Szumski

T

Suzanne Teesdale
William Thesing
Debbie Thill
Simon Thomas
Brett Thompson
Julia Thorn
Timothy Ball Elementary PTO
Tri Town Safety Village, Inc.
Mary Tracy-MacAulay
Tri-Creek Education Foundation, Inc.
Trinity Evangelical Lutheran School
Michael Troxell
Gloria Tuohy
Neal Tyler

V

Monika Valente

Chris and Lynn VanDenburgh
Rebecca Vanderhye
Lynn & Allen Aron VanHouten
John & Barbara VanRamshorst
Jeanne VanSlyke-Huddleston
Alda Vellutini
Coleen Viers
Gabriel Villarreal
William & Bonnie Vinovich
Daniel & Deborah Virkler

W

Jeremy Michael Walker
Teresa Wallace
Melissa Walley
Cyndi and Timothy Walsh,
Walsh Advsiors, Inc.
Walter Cook Insurance Agency, Inc.
Cheri Warnke
Ronda Waters
Jean Wease
Donald and Rose Webber
Jennifer Lin Webber
Ronald & Mary Weber
Gina Weillbaker
Julie & Mark Wendorf
Dean & Barbara White Family Foundation, Inc.
Craig White
Dianne Whiting
Philip and Christena Wichowsky
Mary Ann Wilczynski
Sharon Wilkinson
Dale & Terri Williams
Winfield Community Foundation, Inc.
Winfield Parent Teacher Organization
James M Winiacki
Wipeco Inc.
Kane Family & Wojtas Family

James & Barbara Wood
Barry & Margaret (Forsythe) Wood
Suzann Wright

Y

Youche Country Club

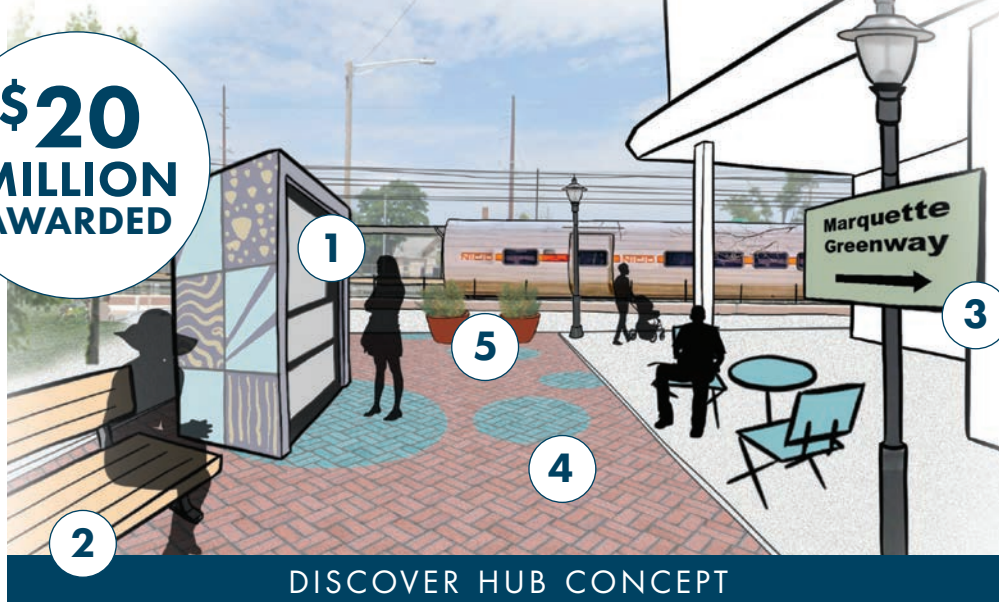
Z

Al and Debbie Zacher
Ted & Lin Zapinski
Todd & Julie Zasada
Michael & Lisa Zdanowicz
Laurie Zditosky
Leonard Zelms
Sandy Ziak
Ziese & Sons Excavating, Inc.
Frank & Susan Zolvinski
Rich & Kathy Zondor

In Kind Donations

LAMAR Advertising

**\$20
MILLION
AWARDED**



- 1 Kiosks to display information about local businesses, attractions, and wildlife and their habitats
- 2 Site-appropriate seating
- 3 Wayfinding signage to connect visitors to local trails and Indiana Dunes National Park
- 4 Permeable pavers for resilient infrastructure
- 5 Planter with native perennials



PHOTOS CLOCKWISE FROM TOP LEFT: THE DISCOVER HUB CONCEPT DIAGRAM / THE DISCOVERY HUB OUTLINE INFORMATION / ON DECEMBER 19, 2024 CROWN POINT COMMUNITY FOUNDATION GATHERED WITH LEGACY FOUNDATION, PORTER COUNTY COMMUNITY FOUNDATION, UNITY FOUNDATION OF LA PORTE COUNTY, AND COMMUNITY LEADERS AND MEMBERS OF THE PRESS TO ANNOUNCE A \$20 MILLION GRANT AWARD FROM LILLY ENDOWMENT INC.

BRIDGING COMMUNITIES THROUGH NATURE

NWI Thrive Initiative Takes Shape Across the Region

The Northwest Indiana community foundations will invest in Indiana's Lake Michigan shoreline, using a \$20 million grant from Lilly Endowment Inc. through the GIFT VIII Community Leadership initiative. The Crown Point Community Foundation, in partnership with the Legacy Foundation, Porter County Community Foundation, and Unity Foundation of La Porte County, received the grant in support of NWI Thrive, a region-wide initiative to strengthen quality of life through enhanced recreation, transit, and environmental stewardship.

NWI Thrive will invest in trails, greenways, and transportation infrastructure to better connect communities across Lake, Porter, and LaPorte counties. Building on major assets like Indiana Dunes National Park, the South Shore Line double tracking project, and the Marquette Greenway Trail, the initiative will expand access to outdoor spaces and support sustainable development.

Key features include the creation of seven Discover Hubs and three trailheads near South Shore Line stations in cities like Michigan City, Gary, and East Chicago. These placemaking sites will showcase public art, educational displays, and wayfinding tools that highlight local culture, wildlife, and nearby attractions.

Education is integrated throughout NWI Thrive to promote stewardship of the region's natural resources. Through interpretive elements, creative placemaking, and public outreach, the initiative will foster deeper community engagement and appreciation for Northwest Indiana's ecological and cultural assets.

Backed by Lilly Endowment's commitment to strengthening Indiana communities, NWI Thrive is a bold step toward a more connected, accessible, and vibrant future for the region.





PHOTOS CLOCKWISE FROM TOP LEFT: (FROM LEFT) KATIE SLY, CPCF PROGRAM & ENGAGEMENT OFFICER, ALEXIUS BARBER, PUBLIC AFFAIRS AND ECONOMIC DEVELOPMENT MANAGER AT NIPSCO, AND MARY NIELSEN, PRESIDENT OF THE CPCF / DURING THE WORKSHOP, INTRODUCTION TO EFFECTIVE DIGITAL FUNDRAISING, FACILITATOR MEGAN BENNETT ENGAGES IN CONVERSATION WITH NICOLE YARROW, THE EXECUTIVE DIRECTOR OF THE NORTHWEST INDIANA CANCER KIDS FOUNDATION, INC. / ATTENDEES AT THE ONE-DAY CONFERENCE, "MAGNETIC STORYTELLING: CRAFTING COMPELLING NARRATIVES FOR FUNDRAISING SUCCESS" LISTEN TO SPEAKER MALLORY ERICKSON ON THURSDAY, NOVEMBER 14, 2024 / ATTENDEES PARTICIPATE IN A GROUP TRAINING DURING THE WORKSHOP - FUNDRAISING FROM FOUNDATIONS & GRANT MANAGEMENT.

CPCF SPARKS NEW ERA OF LEARNING

Through the Launch of the Nonprofit Academy



The Crown Point Community Foundation's newly launched Nonprofit Academy is transforming the nonprofit landscape in Northwest Indiana. With a strong start and growing momentum, the Academy has quickly become a go-to resource for nonprofit professionals seeking to sharpen their skills, expand their impact, and build a stronger sector.

More than 100 professionals have already participated in the Academy's inaugural offerings, which included workshops on Digital Fundraising and Fundraising from Foundations & Grant Management in partnership with The Fund Raising School at the IU Lilly Family School of Philanthropy, and the one-day conference, Magnetic Storytelling: Crafting Compelling Narratives for Fundraising & Operational Success, led by fundraising strategist Mallory Erickson.

"The enthusiasm and strong turnout from professionals at all levels

highlight just how essential these opportunities are," said Katie Sly, Program & Engagement Officer at CPCF. "Nonprofits are embracing this new platform to learn, collaborate, and innovate together."

"The NISOURCE Charitable Foundation and NIPSCO are excited to sponsor the Crown Point Community Foundation's inaugural Nonprofit Academy," said Alexius Barber, Public Affairs & Economic Development Manager at NIPSCO. "We realize the importance of equipping nonprofits with key essential tools that allow them to continue serving the community. It is partnerships such as this that play a major role in strengthening organizations' internal capacity while advancing their mission."

As the Nonprofit Academy continues to grow, CPCF remains committed to advancing the skills, confidence, and capacity of local nonprofit professionals—because when nonprofits thrive, communities thrive.

PRESENTING SPONSOR:

DEAN AND BARBARA WHITE
FAMILY FOUNDATION

PLATINUM SPONSOR:

NiSource
CHARITABLE FOUNDATION

NIPSCO
A NiSource Company

ADDITIONAL PARTNERS:

JOHN & ANN BARNEY
FAMILY FOUNDATION

**CROWN POINT
community
foundation**
CREATING A BETTER FUTURE
IN SOUTH LAKE COUNTY

Memorials

Nothing can ever replace the loss of a friend or loved one, but we can commemorate their life with an everlasting tribute reminding us that they are not forgotten. A memorial donation is a fitting way to remember a special person while at the same time helping others.

Gordon Bates	Frank Josway	Karen Pruzin
Donald Bennett	Russell Keller Family	Roseann Quilling
Ralph Bennett III	Lyra Kennedy	Craig Reese, Terri Williams brother
Dr. John & Helen Birdzell	Helen Kirk	Maureen Rogers
Margaret Braccolino	Richard Koval	Jane Rouge
Betty Jane Elizabeth Buth	Judith Kozlowski	Larry Saylor
Wilbert E. Buth	Sharon Kozub	Maxie Scott
Jerry Caravana	Linda LaSalle	Barbara Seaman
Joyce Carnahan	Ryan W. Lepak	John Thomas Seaman Jr.
Charles Coburn, DDS	Rosemary Longfellow	John Simko
Thomas Coil	Robert W. Lynn	Mark Allen Smedstad
Sue Crisman	Patricia Ann Manis	Jacquelyn Stahl
Bette Jean Druckten	Jane Rouge Martin	Lorraine Viers Steuer
Linda Eisenhower	Alec Matalin	Lisa Schaefer Stover
Forrest and Millicent Everett	John Mauman	William Strachan
Lynette Fredericks	Jim & Betty McDonald	Deborah Studor
Dick Garretson	Ken McEntire	Jane Isley Thesing
Judith Hall	David McMichael	AnnMarie Usdowski
Kegan Hall	Isabelle Melchor	Marie VanSlyke-Bean
Grace Jean Henderson	In Memory of Deceased family members	Richard "Terry" VanSlyke
Donna & Joe Heuer	Donald Metzcus	Robert R VanSlyke Sr
Rosemary Hortyk	Dixie Miller	Roger C. VanSlyke
Kay Hubbard	Joseph D. Nerney Jr.	Ronald John VanSlyke
Edward G. & Kathrine R. Huber	Celia Newcomb	Cole Viers
Benton Scott Huddleston	Kevin D. Perz	Craig Viers
Charles & Virginia Isley	Teresa Petrilenia	Don Viers
Sharon James	Jack Pettit	James Eric Wayco
Jean Ann Johnston	Janie Pierce	Antoinette "Toni" Worley
Joe & Marian Jollief	Gene (Jean) Pilarski, Marie Van Slyke-Bean	

Honorariums

Birthdays, weddings, graduations, anniversaries, and retirements are part of a long list of special events and reasons for honoring someone with a gift. An honorary gift is a fitting way to honor a special person while helping others.

John & Ann Barney	Sandra Noe	Martha "Marty" Wheeler
Gordon Bates Birthday	Faye Platt	Barbara White's Birthday
Pene Castor	Faye Platt's birthday	Dean White's Birthday
Tim Grzych	JoAnne Tubb's Birthday	Terri & Dale's 50th Anniversary

Every effort is made to accurately list our contributors. If a name has been inadvertently omitted from the report, we apologize.



PHOTOS CLOCKWISE FROM LEFT: AFTER A FUN-FILLED DAY AT THE LAKE COUNTY FAIR, A LOCAL RESIDENT GETS A HELPING HAND ABOARD THE PEOPLE MOVER / LOCAL RESIDENTS TAKE ADVANTAGE OF THE CONVENIENCE AND COMFORT OF THE PEOPLE MOVER / THE PEOPLE MOVER PARKED AND READY OUTSIDE THE DEAN AND BARBARA WHITE SOUTHLAKE YMCA'S TRIANGLE HILLS CAMP AND RETREAT CENTER.

With your help, even more residents can experience the fun with a new people mover rolling into South Lake County.

Thanks to a grant from the Crown Point Community Foundation, even more residents across Northwest Indiana can now enjoy regional festivals, parades, and community celebrations without barriers.

An \$8,000 grant was awarded to the South Lake County Agricultural Historical Society to support the purchase of an additional handicap-accessible people mover trailer. This investment ensures that people of all abilities can participate in some of our region's most beloved events.

The South Lake County Agricultural Historical Society, founded in 1984 and rooted in Crown Point, is dedicated to preserving the rich agricultural history of our area. Their mission includes educating the public through the display of antique tools, vehicles, and household items, while also engaging families through hands-on, intergenerational experiences.

"This project helps us meet our goal of inclusivity and accessibility for everyone," said Kelly Miller, Vice President at the South Lake County Agricultural Historical Society.

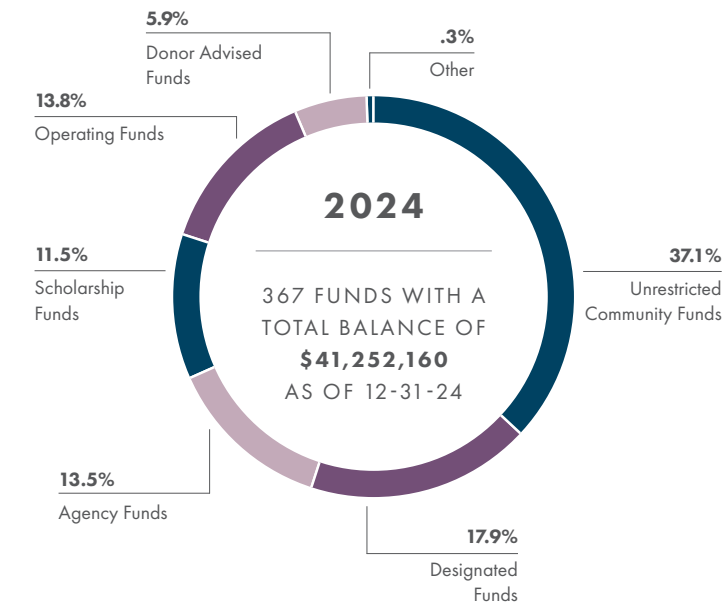
"The new people mover comes equipped with a lightweight aluminum ramp and space for 20 to 30 passengers, including those using wheelchairs, scooters, or who need a step-free option."

The addition of this second unit builds on the success of the original CPCF-funded people mover, which has already strengthened partnerships with groups like the Lake County Fair Board during Senior Days and the Dean and Barbara White Southlake YMCA for events at the new Triangle Hills Camp and Retreat Center. With an expanded fleet, the South Lake County Agricultural Historical Society continues to play a vital role in connecting communities—ensuring that every individual, regardless of mobility, can experience the joy and togetherness of our region's treasured events.



2024 BY THE NUMBERS

Over the past 34 years, the Foundation’s assets have grown thanks to generous donors and excellent investment returns. Our assets allow us to fulfill our mission to South Lake County and beyond, giving grants and scholarships.



EACH FUND TYPE FULFILLS THE DONOR’S WISHES

Unrestricted Fund distributions are granted to nonprofits providing services within South Lake County. Nonprofits apply for a grant; our grant committee reviews the applications and awards these grants.

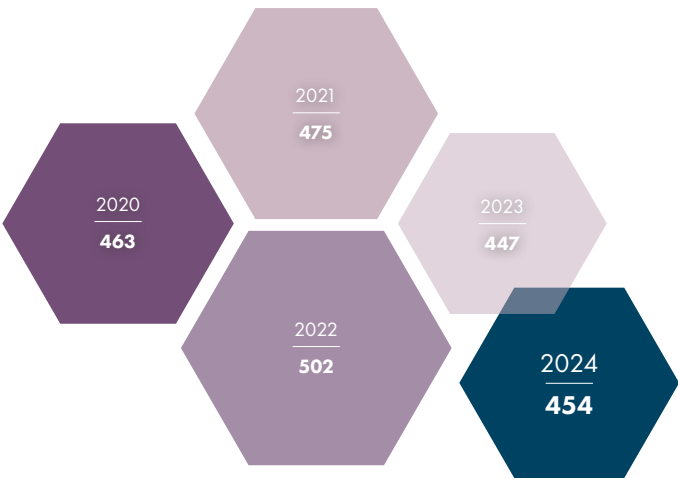
Donor Advised and Designated Fund distributions are granted according to the donors instructions, to nonprofit organizations.

Agency Funds are set up by a nonprofit organization to support their operational and program needs.

Operating Fund distributions support the foundation, allowing us to fulfill our mission to our donors, fund holders and community.

Scholarship Funds are set up by donors. Students apply for these scholarships yearly. The scholarship committee reviews all submitted applications and makes recommendations based on the criteria of each scholarship.

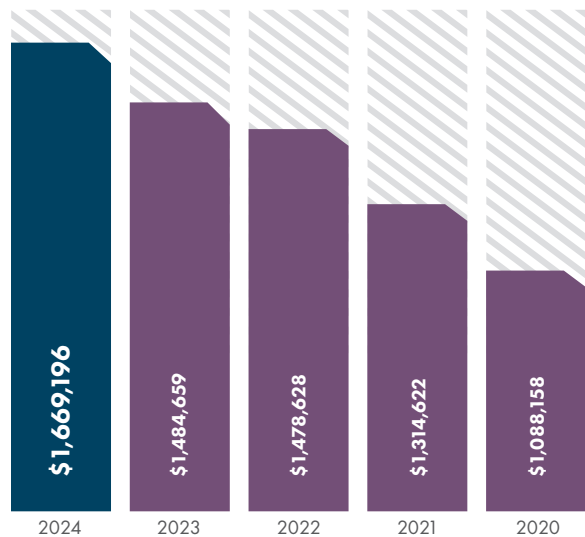
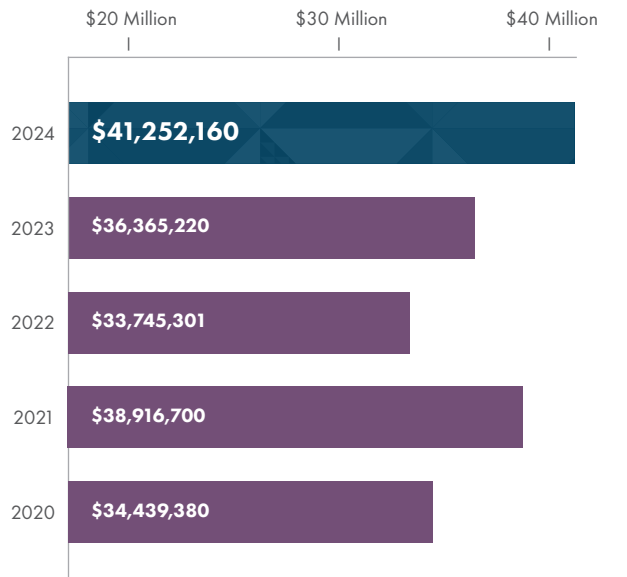
IN 2024, WE
AWARDED MORE THAN
\$1.6 MILLION
IN GRANTS
AND SCHOLARSHIPS



NUMBER OF GRANTS AND SCHOLARSHIPS AWARDED

In 2024, the Crown Point Community Foundation distributed 454 grants and scholarships that supported a multitude of causes and higher education.

TOTAL ASSET GROWTH - PAST 5 YEARS -



GRANTS AND SCHOLARSHIPS AWARDED
Excluding internal grants.

FINANCIALS

Crown Point Community Foundation, Inc.
summarized financial information
year ended December 31, 2024.

Total Assets: \$ 41,252,160

Liabilities and Fund Balance:

Agency Funds 3,497,595

Endowment/pass-through Funds 37,754,565

Total Liabilities and Fund Balance: \$ 41,252,160

Revenue:

Contributions and grants received 3,202,024

Investment return 3,586,748

Operating endowment revenue 356,047

Total Revenue \$ 7,144,819

Expense:

Grants paid to the community 1,521,184

Administrative fee expense 300.811

Operating expenses 621.735

Total Expense \$ 2,443,730

Change in Net Asset \$ 4,701,089

COMPLETE FINANCIAL STATEMENTS WITH ACCOMPANYING FOOTNOTES ISSUED BY
BLUE & CO., LLC ARE AVAILABLE AT THE CROWN POINT COMMUNITY FOUNDATION'S OFFICE.



Thank You

SOUTH LAKE COUNTY



HELP US LEAD, ENGAGE AND ENRICH OUR COMMUNITY

Community Partners are local companies or individuals who join forces with the Crown Point Community Foundation to promote and expand philanthropy, address community issues, and develop nonprofit excellence.



**BILLIE AND
FRAN HOFFMAN
FAMILY FOUNDATION**



**DEAN AND
BARBARA WHITE
FAMILY FOUNDATION**

Edward Jones
MAKING SENSE OF INVESTING

**EUGENE AND
JEAN WEASE**



THE STRENGTH OF BIG. THE SERVICE OF SMALL.



Franciscan HEALTH
Crown Point



**HOFFMAN
CHARITABLE FOUNDATION**

**JOHN & ANN BARNEY
FAMILY FOUNDATION**



Morgan Stanley



THE TIMES | **nwi**
MEDIA COMPANY



**CROWN POINT
community
foundation**

CREATING A BETTER FUTURE
IN SOUTH LAKE COUNTY

115 S. Court Street, Crown Point, IN 46307
PO Box 522, Crown Point, IN 46308

p 219.662.7252 f 219.662.9493
w thecpf.org e info@thecpf.org



Champion. Support. Connect.

CFNS

ACCREDITED
FOUNDATION
COMMUNITY FOUNDATIONS
NATIONAL STANDARDS