

Double Your Impact

\$1 FOR \$1 SYMPHONY ON THE LAWN FUND MATCH

HELP US
FINISH ON A

High Note!

ONLY \$1,407.22
LEFT TO MATCH!

SCHOLARSHIP WINNERS

CPCF AWARDS OVER 100
SCHOLARSHIPS IN 2025

ERIN'S FARM

> CONNECTING VISITORS OF
ALL AGES AND ABILITIES
THROUGH A NEW FARM RIDE.

5 QUESTIONS WITH CPCF

BOARD MEMBER
> JENNIFER LINSLEY

LETTER FROM THE PRESIDENT

HAPPINESS DOESN'T RESULT
FROM WHAT WE GET,
BUT FROM WHAT WE GIVE.

BEN CARSON

AMERICAN RETIRED NEUROSURGEON,
ACADEMIC, AUTHOR, AND GOVERNMENT OFFICIAL

MARY B. NIELSEN
PRESIDENT

Double Your Impact—And Help Us Finish on a High Note!

At the Crown Point Community Foundation, we see every season as a new opportunity to invest in the promise of our community. This year has already been filled with powerful moments that remind us why philanthropy matters.

Right now, we are in the home stretch of the Lilly Endowment GIFT VIII Matching Challenge. Thanks to your generosity, we've nearly completed this incredible **\$1,875,000 opportunity**—but we're not there yet. **Only \$1,407.22 remains to unlock the full potential of the match, with the Symphony on the Lawn Project Fund close to the finish line.** Every gift makes a difference. When you give, your impact is doubled ensuring your generosity reaches further than ever before.

We've also celebrated milestones like our Scholarship Awards Night, where more than \$486,000 was awarded to 107 deserving students - an investment in education that will ripple for generations. We've watched the Women's Giving Circle flourish, as women came together to donate over \$20,500, empowering them to support vital local causes while fostering the joy of collective giving.

Our grantmaking continues to open doors. At Erin's Farm, a CPCF grant helped purchase a new utility vehicle that now gives visitors of all ages and abilities the chance to experience the farm fully. It's a beautiful example of how philanthropy removes barriers and builds connection.

And through the Nonprofit Academy, we continue to strengthen the sector, offering workshops and conferences that equip local nonprofits with the tools to lead, govern, and grow. These programs are building a smarter, stronger, and more resilient nonprofit community right here in South Lake County.

Together, we are proving that generosity is more than giving—it's transforming. On behalf of our Board and staff, thank you for walking beside us, for lifting others, and for believing in the extraordinary impact of community.

Mary B. Nielsen

MARY B. NIELSEN



**OCTOBER 2025
VOLUME 25, ISSUE 2**

PUBLISHER
MARY B. NIELSEN

CREATIVE DIRECTOR
JEANETTE HUSS

CPCF BOARD OF DIRECTORS

MIKE DEXTER, CHAIRMAN OF THE BOARD
EDWARD JONES INVESTMENTS

COREY LISS, 1ST VICE CHAIR
CARSTAR LISS AUTO BODY

CYNDI WALSH, 2ND VICE CHAIR
WALSH ADVISORS

GREG FORSYTHE, SECRETARY
FORSYTHE WEALTH MANAGEMENT

DARRYL MILLER, TREASURER
RETIRED, INLAND STEEL

CHRISANNE CHRIST, EX OFFICIO
CENTIER BANK

JOHN BARNEY, EX OFFICIO
BARNEY ENTERPRISES

SCOTT BABJAK
TELIX PHARMACEUTICALS

BEN BALLOU
BALLOU LAW, LLC

JEFF BAN
DVG TEAM, INC.

DAN DUNCAN
PEOPLES BANK

KEVIN HUSEMAN
KINGDOM HOUSING, LLC

DEAN JONES
MIRAR CUSTOM HOMES, INC.

JENNIFER LINSLEY
CROWN POINT SCHOOLS

JOHN MANIS
HEIDBREDER, INC.

DICK SAUERMAN
RETIRED, NEW BUFFALO SAVINGS BANK

PAMELA SEAMAN, DO
SOUTH LAKE WOMEN'S HEALTH, P.C.

SHANNON SHEEHY
SHEEHY WELL & PUMP CO., INC.

CPCF STAFF

MARY B. NIELSEN, PRESIDENT
BUFFY ADAMS, JEANETTE HUSS, ALEKS JASNIC,
JIM NEWTON, KATE SLY, KATHY WILLIAMS

CONTACT

115 S. COURT STREET, CROWN POINT, IN 46307

p 219.662.7252 **f** 219.662.9493

w thecpf.org **e** info@thecpf.org

f facebook.com/crownpointcommunityfoundation

y youtube.com/crownpointcommunityfoundation

x x.com/thecpf



Every effort is made to accurately list our contributors. If a name has been inadvertently omitted from the newsletter, we apologize.

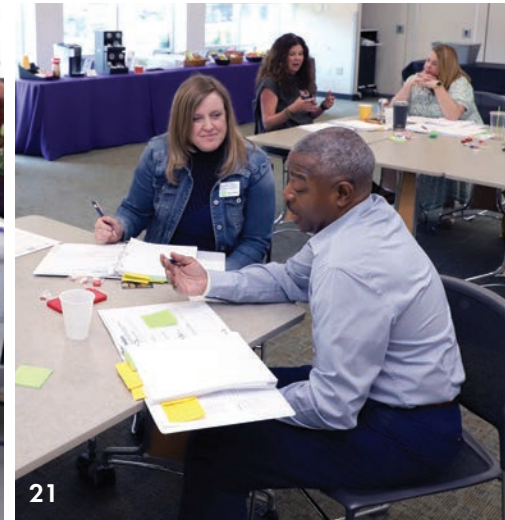


MY FIRST EXPERIENCE WITH THE CPCF SCHOLARSHIP AWARDS NIGHT WAS HEART-WARMING. TO SEE FIRST-HAND THE PROMISE AND EXCITEMENT OF THE SCHOLARSHIP RECIPIENTS WAS AN HONOR. IT IS AN AFFIRMATION THAT THE WORK DONE BY CPCF IS REALLY IMPACTFUL. KUDOS TO THE CPCF TEAM THAT PUT THIS MEMORABLE NIGHT TOGETHER. THEY DID A FANTASTIC JOB.

SHANNON SHEEHY

CROWN POINT COMMUNITY FOUNDATION
BOARD MEMBER

< 2025 MIKE BROWN, JR. MEMORIAL SCHOLARSHIP RECIPIENTS (LEFT TO RIGHT) KALLE SPITZ, LONDON MILLER, AND EMERSON STAMPER ARE CONGRATULATED BY CPCF BOARD MEMBER SHANNON SHEEHY.



ON THE COVER
**DOUBLE YOUR
IMPACT!** WITH OUR
\$1 FOR \$1 SYMPHONY
ON THE LAWN FUND MATCH



THIS MACHINE HAS BECOME ONE OF OUR MOST VALUABLE INVESTMENTS, USED DAILY TO TRANSPORT PEOPLE, FEED, AND SUPPLIES ACROSS THE FARM. THANK YOU CPCF FOR MAKING THIS POSSIBLE.

VIC YANZ

ERIN'S FARM
CHAIRMAN OF THE BOARD

CONTENTS

- 2 LETTER FROM THE PRESIDENT
- 5 COMMUNITY GRANTS
- 16 DONORS
- 18 MEMORIALS
- 18 HONORARIUMS
- 24 UPCOMING EVENTS

FEATURE STORIES

- 4 ERIN'S FARM
- 6 HELP US FINISH THE MATCH - ONE \$1 FOR \$1 MATCHING OPPORTUNITY LEFT
- 8 2025 SCHOLARSHIP RECIPIENTS
- 14 WOMEN'S GIVING CIRCLE
- 19 THE MONEY TALK
- 20 WELCOME NEW BOARD MEMBER AND STAFF MEMBERS
- 21 NONPROFIT ACADEMY
- 23 FIVE QUESTIONS FOR JENNIFER LINSLEY



Scan QR Code to
Give Online Today:
cpcf.fcsuite.com/erp/donate

4





GUESTS AT ERIN'S FARM ENJOY A SCENIC RIDE ON THE BRAND-NEW UTILITY TERRAIN VEHICLE, TAKING IN THE FRESH AIR AND WIDE-OPEN VIEWS WHILE EXPLORING THE GROUNDS IN COMFORT AND STYLE.

With your help, visitors to an animal farm have a new way to connect.

A \$6,000 grant from the CPCF was awarded to Erin's Farm.

Erin's Farm is home to over 150 rescue animals of various species. It sits on 33 acres in Hobart, Indiana. Through educational guided tours, open farm days, summer camps and other specialized events, visitors enjoy a hands-on farm experience with multiple animal interactions.

Due to the natural terrain at the farm, visitors with physical or mobility impairments were unable to experience the full scope of what Erin's Farm had to offer. The CPCF grant was used to purchase a Utility Terrain Vehicle (UTV) to make Erin's Farm more accessible. The UTV is used to transport visitors of all ages and abilities, giving them equal access to all the farm has to offer.

"Erin's Farm knows that the opportunities to educate and create positive human and animal interactions are pivotal in bringing

awareness to all visitors to the farm," said Bridget Baird, Erin's Farm board member. "Our visitors can then bring a greater sense of understanding and empathy into our local communities and beyond."

The UTV also helps Erin Farm's volunteer workers perform the often physically demanding work of keeping the farm operating. When the UTV is not in use transporting visitors, it is used to help transport staff and heavy farm items such as straw and hay bales.

The CPCF grant was part of a \$2 for \$1 matching grant. Erin's Farm raised \$12,000 toward the cost of the UTV, and the CPCF provided a \$6,000 match.

THE UTV ALLOWS FOR THE FARM TO RUN MORE EFFICIENTLY AND TO CREATE AN INSTANTLY ACCESSIBLE ENVIRONMENT BY PROVIDING TRANSPORTATION TO VISITORS OF ALL AGES AND ABILITIES.

BRIDGET BAIRD

ERIN'S FARM BOARD MEMBER

COMMUNITY GRANTS

THE CPCF AWARDED \$126,134.00 IN UNRESTRICTED COMMUNITY GRANTS IN THE JUNE CYCLE.

Education - \$2,800.00

Dunes Learning Center - \$2,800

Funding to support Crown Point High School Environmental Science students learn, work together, and explore career opportunities outdoors in Indiana Dunes National Park.

Food, Nutrition, Agriculture - \$46,000.00

Cedar Lake United Methodist Church

(Project Love Food Pantry) - \$1,000

Funding to purchase an upright freezer to store food that is donated and purchased for the Project Love Food Pantry.

Food Bank of Northwest Indiana - \$20,000

Support to combat increased food insecurity with a monthly mobile market in Lowell that will deliver vital nutrition to South Lake County residents.

Meals on Wheels of Northwest Indiana - \$20,000

Funding to deliver nutritious meals with a wellness check and friendly visit to primarily low-income seniors and other vulnerable individuals who are unable to shop or prepare healthy meals in South Lake County.

Pack Away Hunger - \$5,000

Funding to support the one-day service event at Crown Point High School that engages community volunteers of all ages and abilities to work together to pack 100,000 highly nutritious, shelf-stable meals for distribution throughout Lake County.

Health - \$3,000.00

Pink Ribbon Society - \$3,000

Funding to support the expansion of Breast Care Testing and Patient Financial Assistance Programs.

Housing, Shelter - \$17,250.00

Fair Haven Rape Crisis Center - \$10,000

Funding to support the Portside Suites, a critical expansion of current facilities that directly addresses the urgent need for safe, supportive housing for individuals and families impacted by sexual violence, intimate partner violence or human trafficking in our community.

The Caring Place - \$7,250

Funding to replace and replenish the 5+ year old bedding in our domestic violence shelter, in addition to bedding for the children of our clients, which currently we do not have.

Human Services - \$39,599.00

First Presbyterian Church Crown Point - \$2,500

Funding to support the Presbyterian Food Pantry that provides individuals with shelf stable food items and essential household products.

In-Pact - \$21,400

Funding to replace all non-repairable security cameras located at the Clubhouse, Main Office, & Crown Point Group Homes.

St. Jude House - \$2,500

Funding for playground enhancements to provide a safe and joyful space for children to play and heal.

Veteran Impact Services - \$10,699

Funding to purchase Sandblaster Equipment for the Hotrod Therapy / Blaster Program to improve the lives of veterans.

White's Residential & Family Services - \$2,500

Funding to support operations for Josiah White's Merrillville Foster Care Office.

Public Safety - \$5,500.00

Crown Point Fire Department (City of Crown Point) - \$5,500

Funding to install outdoor, temperature-controlled 'Save Station Towers' with AEDs across Crown Point to provide 24/7 public access and boost out-of-hospital cardiac arrest survival, advancing HEARTSafe Community goals.

Recreation - \$3,500.00

Crown Point Lacrosse - \$2,500

Funding to support Crown Point Lacrosse players who may not have the financial means to participate.

Northwest Indiana Fencing Club - \$1,000

Funding to properly outfit our club to increase community involvement in fencing, especially for those who wouldn't be able to participate without equipment being provided.

Youth Development - \$8,485.00

Children First Learning Center Foundation - \$1,200

Funding to add rubber mulch to the preschool playground to enhance outdoor activities and create a safe environment to play in.

Girl Scouts of Greater Chicago and Northwest Indiana - \$2,500

Funding to host a series of seasonal outdoor activities including a lakefront campfire, ice skating, and horseback riding aimed at engaging and supporting current and prospective Girl Scouts in South Lake County.

Northwest Indiana Special Education Cooperative - \$2,785 (Funded by the Community Literacy Endowment Fund)

Funding to complete the purchase of the remaining language-based curriculum materials and manipulatives for the Early Childhood Program.

South Pointe Youth For Christ - \$2,000

Funding to support guiding Lake County students to make positive choices, build strong relationships, and impact their communities through mentorship and engaging programs.



PHOTOS CLOCKWISE FROM TOP LEFT: THE NORTHWEST INDIANA SYMPHONY, UNDER THE DIRECTION OF MAESTRO KIRK MUSPRATT, PERFORMED FOR RESIDENTS ON THE ST. ANTHONY MAJESTIC CARE CAMPUS / RESIDENTS AND GUESTS GATHER TO TAKE IN THE BEAUTIFUL SOUNDS OF THE NORTHWEST INDIANA SYMPHONY / THIS YEAR, THE NORTHWEST INDIANA SYMPHONY CAPTIVATED A FULL HOUSE AT THE CROWN POINT HIGH SCHOOL AUDITORIUM.

STILL TIME TO MAKE A MATCH!

One Matching Opportunity Remains!

Thanks to your generosity, the Lilly Endowment Inc.'s GIFT VIII \$1,875,000 Matching Challenge is already creating remarkable impact in our community.

Launched in October 2023, this initiative provides \$1,875,000 in matching funds to the Crown Point Community Foundation. This transformative opportunity amplifies the power of every gift, allowing us to expand unrestricted community grantmaking, strengthen essential projects and programs, and build our organizational capacity for even greater long-term impact.

Available matching opportunities include: the Unrestricted Community Grantmaking Fund, which offers a \$2 for \$1 match; the Operating Fund - General CPCF Fund with a \$1 for \$1 match; the Symphony on the Lawn Project Fund with a \$1 for \$1 Match; and the CPCF Nonprofit Capacity Building Programs Fund with a \$1 for \$1 Match.

Because of generous donors, the CPCF Community Grantmaking Fund, the Operating Fund - General CPCF Fund, and the CPCF Nonprofit Capacity Building Programs Fund, are **FULLY MATCHED!** Now, **we need your help to reach the finish line** to complete the remaining match opportunity! We're almost there—help us

reach 100%. With your support, we can unlock the full potential of the Lilly Endowment Inc. matching gift.

A cherished summer tradition, the **Symphony on the Lawn Concert**, in its 25th year, is far more than just a cultural event. This free community concert, hosted by the Crown Point Community Foundation, fosters unity while broadening exposure and appreciation for the arts.

Despite the rainy weather, this year's Symphony on the Lawn was a wonderful success! The concert was moved indoors to Crown Point High School, but the excitement and energy of the evening never missed a beat. Guests enjoyed a beautiful performance by the Northwest Indiana Symphony Orchestra as we celebrated two major milestones: 25 years of Symphony on the Lawn and 35 years of the Crown Point Community Foundation. The evening featured free ice cream from Sundae Funday sponsored by Forsythe Wealth Management, and the return of the popular Summer Instrument Garden presented by Plum Grove Music, which invited attendees of all ages to explore and play a variety of orchestral instruments.

Thank you to our local sponsors that made this event possible: Saint Anthony Majestic Care, Franciscan Health, The City of Crown Point,

Peoples Bank, Friends of Crown Point Tri Kappa, Crown Point Rotary Club, Crown Point Lions Club, Forsythe Wealth Management, and Dawn Foods.

Like the symphony itself, your generosity creates harmony and possibility for our community. **We are in the home stretch of our \$1 for \$1 challenge—only \$1,407.22 remains to unlock the full match.** Every dollar you give today doubles in impact, helping us bring more music, more connection, and more opportunities to South Lake County. Together, let’s finish strong and end on a high note for our community.”

GIVE TODAY!

SYMPHONY ON THE LAWN - \$1 FOR \$1 MATCH

Our annual Symphony on the Lawn program, in its 25th year, is far more than just a cultural event. This free community concert, hosted in partnership with the Northwest Indiana Symphony Orchestra, represents an opportunity to foster unity, and broaden the exposure and appreciation for the arts.



SYMPHONY ON THE LAWN
PROJECT FUND
\$1 FOR \$1 MATCH

UNRESTRICTED COMMUNITY GRANTMAKING -
MATCH IS COMPLETE, THANK YOU!

The majority of the Matching Challenge was designated for any Crown Point Community Foundation Unrestricted Community

Grantmaking Fund, which had \$1,500,000 available in matching funds.

A core component of our work involves expanding our support to address ever-changing and relevant community needs through our grants to local nonprofits. By growing our unrestricted endowed assets, we can provide more support to current critical needs, address emerging challenges, and capitalize on new opportunities that enrich the quality of life for all residents.

CPCF NONPROFIT CAPACITY BUILDING PROGRAMS -
MATCH IS COMPLETE, THANK YOU!

Recognizing the pivotal role of local nonprofit organizations in community development, we are investing in their future through the Nonprofit Academy, a comprehensive workforce development initiative designed to bolster the effectiveness and talent retention in the Lake County nonprofit sector. This initiative provides an innovative solution to address immediate internal capacity needs and lays the foundation for sustainable growth and opportunities within the local nonprofit sector.

OPERATING FUND - GENERAL CPCF FUND -
MATCH IS COMPLETE, THANK YOU!

By investing in the growth of our own internal capacity, most significantly towards the development of a new headquarters, we are investing in our ability to better serve our local nonprofits and the overall community. These funds help support our mission by allowing us to expand programming, increase staff capacity/efficiency, and enhance our visibility in the community.

Only
\$1,407.22
LEFT TO
MATCH!





MYRA WEISS AMOS AND DANE HAYDEN WERE AWARDED THE 2025 DEAN AND BARBARA WHITE SCHOLARSHIPS - SHOWN WITH MARY NIELSEN, PRESIDENT OF THE CROWN POINT COMMUNITY FOUNDATION (ON LEFT) AND KATIE SLY, CPCF PROGRAM DIRECTOR (ON RIGHT).

2025 SCHOLARSHIP WINNERS

The Crown Point Community Foundation Scholarship Awards Night was held on May 8th at the Halls of St. George. The event brought together scholarship recipients, including graduating high school students, current college/trade school students, and non-traditional/adult learners, and their families to celebrate their outstanding achievements as they embark on a journey filled with growth and opportunity.

The Crown Point Community Foundation (CPCF) is proud to continue its tradition of helping to make higher education possible for local scholars. The Foundation awarded 119 scholarship awards to 107 students, totaling \$486,470.

"Each year, the Awards Night reminds us of the remarkable educators and students in our service area—and of the incredible generosity of our donors who make these scholarships possible," said CPCF Board Member Ben Ballou.

"My focus on the board is primarily the audit and investment committees so I don't get much opportunity to see the fruits of our labor," said CPCF Board Member Cyndi Walsh. "Attending the scholarship Awards Night reaffirmed for me the impact of our efforts. It was all smiles and some tears of joy from this year's recipients and that is a testament that we are making a difference in our community."

"This scholarship has helped me mentally as it is also a symbol of my hard work and dedication for which I have known for my

whole life," said Dane Hayden, who was one of the recipients of the Dean and Barbara White Scholarship. "It is also a symbol of what an amazing job my parents have done by raising me with this mindset that working hard silently will eventually pay off."

Each year, the CPCF Scholarship Committee (made up of community volunteers) reviews applications, interviews students and selects the recipients. Scholarships are awarded through special funds that have been established at the Foundation by generous donors in the community. Many scholarship funds are established with the purpose of honoring or memorializing an individual or family member.

"If at all possible, I always make it a point to attend the Scholarship Awards Night," said CPCF Board Member Dean Jones. "This was my third in a row and it's always a privilege and honor to be a part of such a fantastic event! This is such a vital program, and we see first-hand the good it does and the impact it has on young people who have worked so hard and are so deserving."

We are grateful to our Community Partner, the Halls of St. George, for generously hosting this special evening; our Platinum Sponsor, Strack & Van Till; our Silver Sponsor, Puntillo & Crane Orthodontics; and our Bronze Sponsors, Commercial In-Sites, CP Coworking, Tri Kappa of Crown Point, The Nickla Group, and LGS Plumbing, Inc. Their support, along with that of Shane Lawrence Photography and Kyle Muha Photography, was instrumental in making this event a success!



McKENNA SMISER, RECIPIENT OF THE BARNEY FAMILY SCHOLARSHIP, PICTURED WITH CPCF BOARD MEMBER AND SCHOLARSHIP FUND HOLDER, JOHN BARNEY AND ANN BARNEY.



^

THIS SCHOLARSHIP MEANS A LOT TO ME BECAUSE IT SHOWS ME THAT SOMEONE RECOGNIZED ALL OF THE WORK I HAVE PUT INTO MY COMMUNITY, AND IT GIVES ME THE CONFIDENCE TO CONTINUE TO KEEP DOING THE SAME.

WILLIAM WARD

TRI KAPPA SCHOLARSHIP RECIPIENT

<

CLAYTON GAUDRY MEMORIAL SCHOLARSHIP RECIPIENT
NATALEE PUGH MAKES HER WAY TO THE STAGE TO ACCEPT HER CERTIFICATE.



THE CPCF SCHOLARSHIP AWARDS NIGHT, AT THE HALLS OF ST. GEORGE, CELEBRATED INCREDIBLE SCHOLARS AND THEIR FAMILIES, HONORING THEIR ACHIEVEMENTS AND THE LIMITLESS POSSIBILITIES BEFORE THEM.



THIS YEAR'S SCHOLARSHIP RECIPIENTS ARE AS FOLLOWS:

Scholarship

Alec Matalin Memorial "Dope" Scholarship
Alfred J. Gruber Senior Social Studies Honorarium
Alvin & Kathryn Schmidt Scholarship
American Italian Benevolent Society Scholarship
American Italian Benevolent Society Scholarship
American Italian Benevolent Society Scholarship
American Italian Benevolent Society Scholarship
American Italian Benevolent Society Scholarship
Barbara Jenkins Tyler Speech Scholarship
Barney Family Scholarship
Barney's Hub Bootery Scholarship
Bryan C. Niedert Memorial Scholarship
Bryan C. Niedert Memorial Scholarship
Burrell Family Scholarship
Burrell Family Scholarship
Candace Lynne Walton Scholarship
Celia C. Newcomb Memorial Scholarship
Charles Hall & Beatrice Joy Kolar Scholarship
Charles M. & Marjorie Quickle Memorial Scholarship
Charles M. & Marjorie Quickle Memorial Scholarship
Christopher Day Memorial Scholarship
Clayton Gaudry Memorial Scholarship
Colonel John Wheeler Middle School Scholarship
Crown Point Community Foundation Scholarship
Crown Point Community Foundation Scholarship

Name of Recipient

Hunter Haskell
Mikayla Vandergast
Emily Helmuth
Vita Ayala
Kolby Henderlong
Kathleen Pampalone
Josephine Lemmons
Jack Ziegelhofer
Nathan Udal
McKenna Smiser
Aundrea Munoz
Cooper Carey
Anthony Gambino Jr.
Alyssa Vena
Miles Verpooten
Katherine Nordyke
Ava Graper
Brody Wilson
Colten Chandler
Elaina Lagos
Jacob Darnell
Natalee Pugh
Austin Shackleton
Rebecca Allen
Max Glowacki

Amount

\$ 5,000.00
\$ 1,400.00
\$ 600.00
\$ 2,000.00
\$ 2,000.00
\$ 2,000.00
\$ 1,600.00
\$ 1,600.00
\$ 1,500.00
\$5,000/Semester (\$40,000) | 8 Semesters
\$2,705/Year (\$8,115) | 3 Years
\$ 2,500.00
\$ 2,500.00
\$ 2,740.00
\$ 2,740.00
\$ 1,165.00
\$ 2,500.00
\$ 2,500.00
\$ 3,190.00
\$ 3,190.00
\$ 600.00
\$ 2,500.00
\$ 1,000.00
\$ 2,500.00
\$ 2,500.00



<

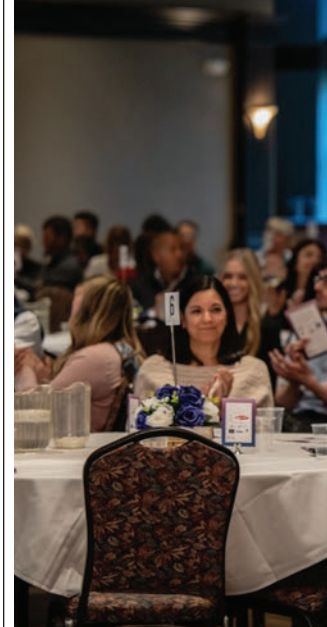
THIS SCHOLARSHIP MEANS A LOT TO ME BECAUSE IT ALLOWS ME TO PURSUE MY INTEREST IN COMPUTER SCIENCE AT PURDUE WEST LAFAYETTE. IT IS A SYMBOL OF THE GENEROSITY OF OUR COMMUNITY AND I FEEL VERY HONORED TO BE CHOSEN FOR IT.

LOGAN KNAPP

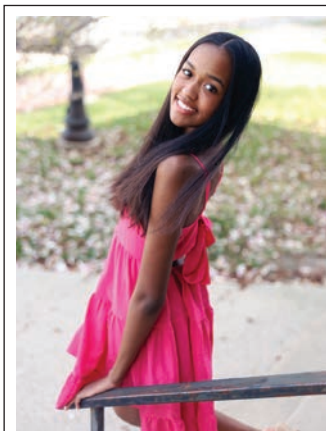
DONALD & PHYLLIS (DILLABAUGH) ROSS PURDUE SCHOLARSHIP



CROWN POINT SWIM CLUB ALUMNI SCHOLARSHIP RECIPIENT AIDAN GUBBINS CELEBRATES WITH HIS FAMILY.



MAGGIE MANCE WALKS TOWARDS THE STAGE TO ACCEPT THE GEORGE LETZ III MEMORIAL SCHOLARSHIP.

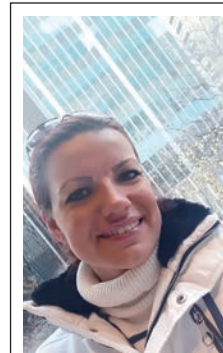


<

BEING SELECTED AS THE RECIPIENT OF THIS SCHOLARSHIP IS INCREDIBLY SPECIAL TO ME. NOT ONLY HELPING ME FINANCIALLY, BUT ALSO BEING RECOGNIZED FOR LEADERSHIP AND PARTICIPATION, ALIGNING WITH RUSS KELLER'S VALUES IS EXTREMELY REWARDING.

BROOKLYN CARTER

RUSS KELLER FAMILY SCHOLARSHIP RECIPIENT



Scholarship

Crown Point Community Foundation Scholarship
Crown Point Community Foundation Scholarship
Crown Point Community Foundation Scholarship
Crown Point Lions Club Scholarship
Crown Point Lions Club Scholarship
Crown Point Swim Club Alumni Scholarship
Crown Point Youth Baseball Scholarship
Crown Point Youth Baseball Scholarship
David Gergely Memorial Scholarship
Dean and Barbara White Scholarship
Dean and Barbara White Scholarship
Donald & Phyllis (Dillabaugh) Ross Purdue Scholarship
Donald & Phyllis (Dillabaugh) Ross Purdue Scholarship
Dorothy Dillman Max Scholarship
Dr. James W. Gentleman Memorial Scholarship
George Letz III Memorial Scholarship
Gil and Gail Stiener Family Scholarship
Helen Zielinski & Ray Stuck Family Scholarship
Jerry A. Caravana Athletic Director Scholarship
Jerry A. Caravana Athletic Director Scholarship
Jerry Ross Elementary PTO Scholarship
JoAnne and Jim Haag Scholarship
John D. Amodeo Scholarship
Joseph & Evelyn Skora Memorial Scholarship
Joseph & Evelyn Skora Memorial Scholarship
Joseph & Evelyn Skora Memorial Scholarship
Joseph N. and Annette M. Allegretti Scholarship

Name of Recipient

Amount

Aviana Hall	\$ 2,500.00
Sara Kamp-Austin	\$ 2,500.00
Lauren Peak	\$ 2,500.00
Vanessa Del Real	\$ 1,000.00
Isabella Sevenz-Coleman	\$ 1,000.00
Aidan Gubbins	\$5,000/Year (\$20,000) 4 Years
Logan Cotton	\$ 1,000.00
Mick Vagner	\$ 1,000.00
Macie Keilman	\$ 600.00
Dane Hayden	Full Scholarship 8 Semesters
Myra Weiss Amos	Full Scholarship 8 Semesters
Logan Knapp	\$ 3,000.00
Emilia Wilson	\$ 3,000.00
Elena Apostolova	\$ 1,500.00
Makenna Carmichael	\$ 2,500.00
Maggie Mance	\$ 2,500.00
Emma Bragg	\$ 2,965.00
Elisa Algozine	\$ 750.00
Alexis Smith	\$ 1,525.00
Jacob Soley	\$ 1,525.00
Kayden Karlson	\$ 1,000.00
Ethan Sauter	\$ 2,385.00
Christian de la Paz	\$ 1,000.00
Anthony Gambino Jr.	\$ 2,780.00
Trent Hurysz	\$ 2,780.00
Henry Maurer	\$ 2,780.00
Zach Brooks	\$ 1,000.00



<
WITH THE ROOM CLAPPING IN CELEBRATION, ALYSSA VENA MAKES HER WAY TO THE STAGE TO ACCEPT THE BURRELL FAMILY SCHOLARSHIP.



MACARTHUR ELEMENTARY PTO SCHOLARSHIP RECIPIENT, LILA PACK AND CPCF BOARD MEMBER CHRISANNE CHRIST.



<
THIS SCHOLARSHIP HELPS ME TO APPRECIATE THE COMMUNITY IN WHICH I LIVE, EVEN MORE.

IT HAS ALSO GIVEN ME THE DESIRE TO GIVE BACK TO FUTURE STUDENTS AND THE COMMUNITY, BECAUSE I UNDERSTAND THE HONOR AND THE PRIDE OF RECEIVING A SCHOLARSHIP.

ETHAN SAUTER

JOANNE & JIM HAAG SCHOLARSHIP RECIPIENT AND PETE BREUCKMAN SR. TRADESMAN SCHOLARSHIP RECIPIENT



<
THIS SCHOLARSHIP WILL REMIND ME THAT NO MATTER THE OBSTACLES WE FACE IF WE ARE PERSISTENT AND NEVER GIVE UP, OUR DREAMS WILL COME TRUE.

ELENA APOSTOLOVA

DOROTHY DILLMAN MAX SCHOLARSHIP RECIPIENT



JOHN D. AMODEO SCHOLARSHIP RECIPIENT, CHRISTIAN DE LA PAZ CELEBRATES WITH HIS FAMILY.



TRI KAPPA - SUE CRISMAN MEMORIAL SCHOLARSHIP RECIPIENT, SARA KAMP-AUSTIN WITH HER SON AND CPCF BOARD MEMBER BEN BALLOU.

Scholarship

Karen & Cornel Raab Scholarship
Karen Pruzin Scholarship
Karen Pruzin Scholarship
Kathy, Russ and Jim Keller Scholarship
Kay Hubbard Music Scholarship
L. Jane Keene Memorial Scholarship
Lake Street Elementary PTO Scholarship
Lisa Schaefer Stover Scholarship
Liss CARSTAR Scholarship
MacArthur Elementary PTO Scholarship
Manhart/Gibbons Family Memorial Scholarship
Marie Van Slyke Scholarship
Marilee Thanholdt Memorial Scholarship
Marion Kellum Performing Arts Scholarship
Marion Kellum Performing Arts Scholarship
Marion Kellum Performing Arts Scholarship
Mark and Lindsay Bates Scholarship
Mark Edwards Memorial Scholarship
Marty Shahbaz Football Scholarship
Mary Gregory Geimer Memorial Scholarship
Maurine Schlemmer Memorial Scholarship
McMichael Family Scholarship
Mike Brown, Jr. Memorial Scholarship
Mike Brown, Jr. Memorial Scholarship
Mike Brown, Jr. Memorial Scholarship
Millicent & Forrest Everett Memorial Scholarship

Name of Recipient

Colleen Donaldson
Adrian Licea
Gracelyn Nack
Alexa Chapman
Samantha Van Hoose
Lily Kreykes
Isabella Tufts
Elizabeth Strezo
Raquel Ruffin
Lila Pack
Angelynn Neal
Adrian Licea
Kylee Kleven
Nic Collier
Kylee Kleven
Raquel Ruffin
Addisyn Wiley
Jane Myres
Anton Prlc
Andrew Parent
Sydney Saqui
Maggie Mance
Madison Donofrio
Landon Miller
Kalle Spitz
Emerson Stamper
Alexa Chapman

Amount

\$ 2,840.00
\$ 2,000.00
\$ 2,000.00
\$ 910.00
\$ 2,000.00
\$ 810.00
\$ 1,000.00
\$ 1,665.00
\$ 1,500.00
\$ 1,000.00
\$3,055/Year (\$12,220) | 4 Years
\$ 500.00
\$ 2,530.00
\$ 1,000.00
\$ 1,000.00
\$ 1,000.00
\$ 1,000.00
\$ 800.00
\$ 1,530.00
\$ 2,500.00
\$ 600.00
\$ 1,630.00
\$ 2,610.00
\$ 2,610.00
\$ 2,610.00
\$ 780.00

>

BEYOND FINANCIAL SUPPORT, THIS SCHOLARSHIP MOTIVATES ME TO STAY COMMITTED TO MY GOALS. IT GIVES ME THE OPPORTUNITY TO FOCUS MORE ON MY STUDIES WITHOUT THE ADDED FINANCIAL STRESS. IT ALSO CONNECTS ME TO A COMMUNITY THAT VALUES EDUCATION AND ATHLETICS, WHICH ENCOURAGES MY GROWTH NOT ONLY AS A STUDENT BUT ALSO A PERSON.

GRACELYN NACK
KAREN PRUZIN SCHOLARSHIP RECIPIENT



BARBARA JENKINS TYLER SPEECH SCHOLARSHIP RECIPIENT, NATHAN UDALL AND CPCF BOARD MEMBER DEAN JONES.

Scholarship

Paul and Dorothea Everett Scholarship
Pete Breuckman Sr. Tradesman Scholarship
Pete Breuckman Sr. Tradesman Scholarship
Pettit Family Memorial Student Athlete Scholarship
Ralph E. and Dee Bennett Scholarship
Robert "Bob" Brown Scholarship
Robert Taft Middle School PTO Scholarship
Robert Taft Middle School PTO Scholarship
Ronald & Suzanne Borto Scholarship
Russ Keller Family Scholarship
Shirley Mudy Scholarship
Shirley Mudy Scholarship
Solon Robinson Elementary School PTO Scholarship
Solon Robinson Elementary School PTO Scholarship
St. Mary's Catholic Community School Scholarship
St. Mary's Catholic Community School Scholarship
Tim Galusha Memorial Scholarship
Timothy Ball Elementary PTO Scholarship
Timothy J. Grzych Memorial Scholarship
"Tiny" Knesek Bohling & Karla Stiener Scholarship
Todd Szanyi Memorial Scholarship
Todd Szanyi Memorial Scholarship
Tri Kappa Scholarship
Tri Kappa Scholarship
Tri Kappa Scholarship
Tri Kappa Scholarship
Tri Kappa Scholarship
Tri Kappa - Sue Crisman Memorial Scholarship
Tri Kappa - Women's Giving Circle Scholarship
Trinity Lutheran School PTL Scholarship
Trinity Lutheran School PTL Scholarship
Virgil A. Place Scholarship
Walter J. Bernacki Memorial Scholarship
Wilbert Buth Music Scholarship
Wilbert Buth Music Scholarship
William G. & Phyllis M. Fatch Scholarship
Winfield Elementary PTO Scholarship
Women's Giving Circle Scholarship
Youche Country Club Scholarship
Zondor Family Scholarship

Name of Recipient

Allison Holbrook
Quinten Osburn
Ethan Sauter
Larry Ellison
Caleb Slings
Aviana Hall
Aadil Khan
Ryan Welsh
Alexa Murray
Brooklyn Carter
Sienna Antkiewicz
Cassidy Toole
Isabelle Adams
McKenzie Poer
Cecelia Elizondo
Gabriella Thorn
Zachary Cooper
Isabella Paape
Alexander Maranowicz
Ryland Hochstetler
Kiara Desiderio
Caiden Verrett
Carson Granger
Ashley Grindey
Emerson Stamper
William Ward
Ava Zandstra
Sara Kamp-Austin
Denise Emery
Isaac Thompson
Liam Wielert
Briana DeJesus
Carson Granger
Reagan Claus
Joanna Clausing
Alyssa Batey
Ariana Andreou
Jennifer Reissman
Hannah Jordan
Macie Keilman

Amount

\$ 2,215.00
\$ 2,500.00
\$ 2,500.00
\$ 2,500.00
\$ 1,230.00
\$ 1,000.00
\$ 1,375.00
\$ 1,375.00
\$ 585.00
\$ 2,000.00
\$ 1,000.00
\$ 1,000.00
\$ 500.00
\$ 500.00
\$ 1,000.00
\$ 1,000.00
\$ 3,970.00
\$500/Year (\$2,000) | 4 Years
\$ 2,500.00
\$ 930.00
\$ 880.00
\$ 880.00
\$ 2,000.00
\$ 2,000.00
\$ 2,000.00
\$ 2,000.00
\$ 2,000.00
\$ 1,000.00
\$ 1,000.00
\$ 750.00
\$ 750.00
\$3,920/Year (\$15,680) | 4 Years
\$ 500.00
\$ 1,000.00
\$ 1,000.00
\$ 550.00
\$ 1,000.00
\$ 2,500.00
\$ 750.00
\$ 1,875.00



<

THIS SCHOLARSHIP WILL HELP ME STAY MOTIVATED TO PURSUE MY DREAMS OF GOING TO MEDICAL SCHOOL AND BECOMING A DOCTOR. ESPECIALLY KNOWING THAT THE COMMUNITY HAS MY BACK AND IS SUPPORTING ME THROUGH THE PROCESS.

MAX GLOWACKI
CPCF SCHOLARSHIP RECIPIENT

UNIVERSAL SCHOLARSHIP APPLICATION OPENS JANUARY 2026

2026 Universal Scholarship Application Opens January 1, 2026 for Graduating High School Students, College Students and Adult Learners.

Apply online beginning January 1, 2026 by following the link on our website, www.thecpcf.org. Deadline for applications will be Sunday, March 1, 2026.



**HELP US LEAD, ENGAGE
AND ENRICH OUR COMMUNITY**



WHY WE GIVE: Centier Bank strives to ensure that the quality of life for all who live and work in our communities is a top priority. Through corporate dollars, volunteerism, and financial education, we consistently aim to make a greater impact in our communities. Centier has preserved hometown banking since 1895, and promises to continue that legacy for generations to come.

MISSION: Indiana's largest private, family-owned bank is a testament to the idea that no matter how large a business grows, it is still possible to provide remarkable service. This comes naturally to Centier associates because of our servant heart culture. We have come to be known for warm, personalized service and relationship-style banking. Centier Bank's commitment to community means neighbors are serving neighbors, working together to create a better way of life today and for future generations.



**Member
FDIC** www.centier.com

Centier Bank and our Associates
are dedicated to the communities
we serve across Indiana.



Women's Giving CIRCLE

COLLECTIVE GRANTMAKING EVENT



PHOTOS CLOCKWISE FROM TOP LEFT: WOMEN'S GIVING CIRCLE MEMBERS ENJOY THE EVENING AT THE EAST POINT VENUE ON TUESDAY, SEPTEMBER 9, 2025 (FROM LEFT TO RIGHT): CPCF PRESIDENT MARY NIELSEN; JANE LAMBESIS OF FEDERATED HERMES; KATHY ROESER OF THE ROESER GROUP AT MORGAN STANLEY; KAY NEWTON; AND CPCF BOARD MEMBER CYNDI WALSH / (LEFT TO RIGHT): KAREN SCHRUM; BETTE OESTERLE; BUFFY ADAMS, CPCF VICE PRESIDENT OF PHILANTHROPY; EDEN KOENIG AND BARBARA MUCKEL / CPCF VICE PRESIDENT OF PHILANTHROPY, BUFFY ADAMS, KEEPS THE CROWD SMILING WITH AN ENGAGING ROUND OF TRIVIA / WINNERS OF THE WOMEN'S GIVING CIRCLE TRIVIA GAME CELEBRATE WITH FUN PRIZES / (LEFT TO RIGHT): SUE MORENO AND DONNA PACE / (LEFT TO RIGHT): KAREN DEXTER, BARBARA MATTINGLY, KAREN LYNN, AND SHYVONNE BARBER.

This year's Women's Giving Circle event carried forward its inspiring tradition of bringing women together to make a real difference in the community.

The Women's Giving Circle, a collective giving initiative of the Crown Point Community Foundation, welcomes all women to take part in supporting local causes. Through contributions of \$100 or more, members pool their donations, which can be made at any time throughout the year. At the annual event, held on the second Tuesday in September, attendees cast their votes to decide which nonprofits will receive grants. This meaningful event empowers women to play an active role in philanthropy and see the immediate impact of their generosity.

This year, the Women's Giving Circle donated an incredible \$20,500 to strengthen our community!

At the event, \$8,000 was granted directly to nonprofits, with four organizations each receiving \$2,000 from the Women's Giving Circle, plus a \$2,000 bonus grant was awarded through the Tim and Cynthia Walsh Endowment Fund, a donor advised fund at CPCF, totaling five grants to nonprofits.

In addition, \$2,500 was designated for the 2026 Women's Giving Circle Scholarship, continuing the tradition of empowering future changemakers.

The remaining \$10,000 raised was directed to the CPCF Unrestricted Community Grantmaking Fund. This Fund provides grants to support community needs and programs three times each year through the grant process at the Foundation.

"We are deeply grateful to the Women's Giving Circle for their generous grant and the encouragement it brings to our mission," said Sue Moreno, Marketing Coordinator at In-Pact. "The event was both inspiring and uplifting, reminding us of the power of women coming together to make a difference. Through the support of the Crown Point Community Foundation and its many programs, we feel connected to a vibrant network of partners, resources, and opportunities that strengthen our nonprofit community."

"Our rocking chairs have become a treasured destination for residents and tourists for connection and reflection," said Julie Zasada, Executive Director at Cedar Lake Historical Association. "The Women's Giving Circle grant award will enable us to repair and replace damaged chairs so that we can continue to provide a safe, comfortable place to enjoy beautiful lake views, fellowship, and relaxation."

"We all are excited and grateful to once again receive a Women's Giving Circle Grant," said Bonnie J. Meyer, Executive Director at Community Help Network, Inc. "This money will help to keep our programming sustainable."

"We are so grateful to be one of grant recipient winners and that the women in our community support our mission of helping local children battle cancer," said Nicole Yarrow, NICK Foundation's Executive Director. "The grant will be used for our NICK Family medical bill fund."

"We are thrilled that St. Jude House was selected as a recipient of the \$2,000 grant from the Women's Giving Circle," said Lauren Zurbriggen, Director of Development at St. Jude House. "This support allows us to provide welcome kits filled with toiletries, bedding and linens - all basic needs that help us to transform our shelter into a place that feels more like home for survivors seeking safety and healing."

"At the Women's Giving Circle Collective Grantmaking Event, women come together to build meaningful connections and gain valuable insight into our community's needs," said Mary Nielsen, President of the Crown Point Community Foundation. "This gathering is more than just an event—it is a movement of women pooling their voices, resources, and passions to make a tangible difference. Every woman has a place here, and we invite all in South Lake County to experience firsthand the profound impact of collective giving. Together, we can create lasting change and ensure that our communities continue to grow stronger for generations to come."

After attending my first Women's Giving Circle event last year I was very much looking forward to this year," said CPCF Board Member Shannon Sheehy. "It is a wonderful evening of food and fellowship with like-minded women who are passionate about improving our community. The video submissions were all outstanding, which made voting very difficult. Kudos to all who were involved in this very successful event including donors, grant applicants, our dedicated CPCF staff, and all who provided the delicious food and drinks."

The event, held at The East Point Venue, was sponsored by Jane Lambesis of Federated Hermes and Kathy Roeser of The Roeser Group at Morgan Stanley.

2025 GRANT RECIPIENTS GRANT AMOUNT: \$2,000 EACH

CEDAR LAKE HISTORICAL ASSOCIATION
COMMUNITY HELP NETWORK
IN-PACT

NORTHWEST INDIANA CANCER KIDS FOUNDATION
ST. JUDE HOUSE



WOMEN'S GIVING CIRCLE GRANT RECIPIENTS POSE WITH WGC'S SPONSORS AND CPCF PRESIDENT MARY NIELSEN. BACK ROW, PICTURED FROM LEFT TO RIGHT: JENNIFER FRAZIER, NANCY LEAR, LOUANN MILLER, AND PAM HOWARD FROM CEDAR LAKE HISTORICAL ASSOCIATION; NICOLE YARROW, NICK FOUNDATION'S EXECUTIVE DIRECTOR; BETTE OESTERLE, LINDSAY FROHNAPPLE AND EDEN KOENIG FROM COMMUNITY HELP NETWORK; CPCF BOARD MEMBERS SHANNON SHEEHY, CYNDI WALSH, AND CHRISANNE CHRIST, JANE LAMBESIS OF FEDERATED HERMES; KATHY ROESER OF THE ROESER GROUP AT MORGAN STANLEY; CPCF PRESIDENT MARY NIELSEN. SEATED, PICTURED FROM LEFT TO RIGHT: JULIE ZASADA, EXECUTIVE DIRECTOR AT CEDAR LAKE HISTORICAL ASSOCIATION; BRIELLE HAUPTLI, VOLUNTEER AND OUTREACH COORDINATOR AT ST. JUDE HOUSE; BONNIE J. MEYER, COMMUNITY HELP NETWORK'S EXECUTIVE DIRECTOR; AND SUE MORENO, MARKETING COORDINATOR AT IN-PACT.

DONATIONS

APRIL 1, 2025 - AUGUST 31, 2025

A

Mary Ann Abraham
Trish Alt
Joseph & Lori Amodeo
John W. Anderson Foundation

B

Scott and Tracy Babjak
Irene Bairaktaris
Atty Benjamin & Angela Ballou
Jeffrey & Roxanne Ban
Shvonne Barber
Barney Family Foundation
Mark & Lindsay Bates
Lori Bathurst
Jill Beckham
Bethany Borgo
Suzanne Borto
Indira & Dr. Gary Brigham
Sandra D. Brown-Seabold
Gretchen Burdan

C

Juliana Caffarini
Robert and Gwen Campbell
Centier Bank Corporate Centre
Chrisanne Christ
Ryan & Linda Collier
Commercial In-Sites, LLC
City of Crown Point
Crown Point Lions Club, Inc.
Crown Point Rotary
Barbara Cueller
Marian Cunningham

D

Dawn Food Products
Suzanne Demmond
Karen E. Dexter
Eric & Robin Dillon
Dr. Raymond & Donna Doherty
Michelle Duffy
Georgia Durant

F

First Financial Bank
Danielle Flores
Shirley Forney-Bates
Greg & Nancy Forsythe
Franciscan Alliance
Jen Frazier
Lindsay Frohnapple

G

Dr. Christopher Gall
Greg Galusha
Larry Gardner
GoHistoryTravel
Gurley Leep Automotive Family
Stephen & Letitia Gustas

H

Cindy Hall
Hanover Schools
Education Foundation
Crystal Harrigan-Barry
Federated Hermes
Steve & Carol Highsmith
Chuck & Darlene Hopp
Pam Howard
Kevin & Renee Huseman
Emma Hutchings
James and Jennifer Hutton

J

Ashlee Jones
Dean Jones
Sara Jones

K

Judith Kaleta
Kappa Kappa Kappa, Inc.,
Gamma Theta Chapter
Janet I Katich
Brett Keeler
Dawn Kepshire
Tamra Kepshire
Marge Kerr

Heather Killion
Leslie Klauk
Eden Koenig
Lisa Koester
Walter Kotlin
Tracy Kowalczyk

L

Mary Jo Lane
Judith Lazar
Nancy Lear
Steve & Kathy Lessner
Jeanene H. Letcher
Sharon Letz
LGS Plumbing
Lifelong Learning at Pebble Creek Inc
Peggy Ligda
Mariellen Liggett
Jennifer Linsley
Corey & Charlotte Liss
Town of Lowell
Karen Lynn

M

Man Cave Barbers LLC
Manned Space Flight
Education Foundation
Jacklyn Mead
Ralph & Lou Ann Miller
Pat J. Miller
Susan Moreno
Tom Motley

N

New Leash On Life
Kay Newton
The Nickla Group, LLC
Stacy J. Niedert
Mary Nielsen
NiSource Charitable Foundation
Northwest Indiana Cancer
Kids Foundation
The Nowicki Family

O

Bette J. Oesterle
OneHope

P

Peoples Bank
Ben Bochnowski
Pete & Sons Auto Repair, Inc.
Jack Pettit
Jessica Pettit Albaugh
Faye Platt
Thomas G. Pruzin
Puntillo and Crane Orthodontics, PC

R

Diane & Jeff Reimer
Sue Riester
Patrick and Traci Rigsby
John & Kathleen Roeser
Daniel & Carol Root
Rubino, Ruman, Crosmer, & Polen,
LLC Attorneys at Law

S

Carol Sanders
Atty. Kathryn Schmidt
Bridget Schroeder
Peg Shaffer
Shannon Sheehy
Joshua Sickinger
Katie Sly
Laura Small, Holladay Properties
Tammie & Philip Sopczak
South Lake Medical Realty, LLC
St. Anthony Home
St. Jude House
Mary Steele
Sandra Stevens
Vicki Stojkovich

T

Suzanne Teesdale
Brett Thompson
Mary Tracy-MacAulay

Tri-Creek Education Foundation, Inc.
Gloria R. Tuohy

Dale & Terri Williams
Suzann Wright

U

U.S. Coins, LP

Y

Youche Country Club

V

Rebecca Vanderhye
Allen A. VanHouten
Lynn VanHouten
Alda Vellutini
William & Bonnie Vinovich

Z

Julie A. Zasada
Ziese & Sons Excavating, Inc.

W

Jeremy Michael Walker
Melissa Walley
Dr. Cyndi & Timothy Walsh
Ronda Waters

WAYS TO GIVE... FOR TODAY AND TOMORROW

1. **Cash** - Cash donations can be made by mail, dropping off at our office, or online.
2. **Stocks or Securities** - The Foundation has the ability to accept gifts of publicly traded stocks.
3. **IRA Distributions** - Qualified Charitable Distributions can be made directly to the Foundation from your IRA custodian, reducing taxable income (*Distributions cannot be directed to a Donor Advised Fund*).
4. **Wills and Bequests** - Talk with your attorney and name the Crown Point Community Foundation as a beneficiary of all or a portion of your estate. Please use the following wording - "I give or bequeath to the Crown Point Community Foundation, 115 S. Court St., Crown Point, Indiana % or the sum of \$ of my residuary estate."
5. **Life Insurance** - You can designate all or a portion of your life insurance policies, potentially saving Indiana inheritance tax and federal estate taxes.



COMMUNITY
partners

HELP US LEAD, ENGAGE
AND ENRICH OUR COMMUNITY



FORSYTHE
WEALTH MANAGEMENT

RESEARCH RELATIONSHIPS RESULTS

WHY WE GIVE: Forsythe Wealth Management was founded with a distinct stewardship mindset. We believe the ability to grow financial wealth comes with a duty to share some of that wealth with others. We give a significant portion of our income to charitable causes and encourage our clients to consider doing the same.

MISSION: Forsythe Wealth Management's mission is to guide clients toward achieving their financial goals. We deliver customized advice to help clients *have the money they need when they need it*, giving them peace of mind to focus on other aspects of life. In fulfilling our fiduciary duty to put client interests first, we always strive to be trustworthy, responsive, and easy to work with.



SYMPHONY ON THE LAWN:

Forsythe Wealth Management generously sponsored a Sundae Funday ice cream social, bringing the community together to celebrate 25 years of Symphony on the Lawn and 35 years of the Crown Point Community Foundation.

www.forsythewealth.com

MEMORIALS

APRIL 1, 2025 - AUGUST 31, 2025

Albert and Isabelle Metsch

Richard & Joanne Buehrle

BJ Hubbard

Matt & Sandy Bapple
Steve & Kathy Lessner
Diane and Jeff Reimer
Dale & Terri Williams

Bob Reeves

Matt & Sandy Bapple

Carol Bangsberg

Julie Wendorf

Carol Root

Matt and Sandy Bapple
John & Ann Barney
John & JoAnn Birdzell
Edward P. Casady
Joseph Casday
Richard V. and Holly Ann Hickman
Darryl & Pat Miller
Dr. Allan & Sally Nailbor
Keith & Mary Nielsen
Diane and Jeff Reimer
Peg Shaffer
Shannon Sheehy

Charles Hall Kolar

Robert Bromm
Chad & Renee Burch
John and Shelley Burgett

Community Foundation of Greater
Fort Wayne, INC.
Deb Farrenkopf
Joseph and Karen Gawor
Thomas and Dawn Gould
Matt, Christy, Abby, Anna, Mattie &
Esther Isger
Charles Kevin & Kelly Lynn Kolar
Melissa and Steve Likas
John Manis
Frances A. Van Meter
Oesterle Properties LLC
Tina & Tom Robinson
Shrines International South Lake
County Shrine Club
Meredith Craig Shuckford
Jerome L. Sund
Mark Troutman and Ann Wallace
Mary and Eric Wangler
Dana Zivkovich

Cole Viers

Linda Viers

Donald and Theresa Cowan

Joseph & Lori Amodeo

Donna and Joe Heuer

Paula Keller

Doris M. Austgen

Terry & Karen McMahon

Eldon Strong

William & Bette Babjak
Atty. David Nicholls

Imogene Pilarsi

Jeanne VanSlyke-Huddleston

Joanne Nastoff

Marge Kerr

Kathleen Hughes

Charlotte Fedorchak

Lisa Schaefer Stover

Kenneth & Rita Backe

Marie VanSlyke-Bean

Jeanne VanSlyke-Huddleston

Nona Brady

Katherine Chariton

Norma Ruble

Richard & Joanne Buehrle

Pat Radu

Nancy Sanders

Ralph Bosetti

Marijo Dluzak

Richard "Dick" Beckman

Michele Beckman, Julie Ann Peterson,
and Shaun Richard Beckman

Richard "Terry" VanSlyke

Jeanne VanSlyke-Huddleston

Robert Lynn

Mara Deaton

Robert R VanSlyke Sr

Jeanne VanSlyke-Huddleston

Ronald Gang

Helen McEntire

Steve and Moni Dravet

Joseph & Lori Amodeo

Wilbert E. Buth

Eugene & Linda Matzat

HONORARIUMS

APRIL 1, 2025 - AUGUST 31, 2025

Dan Duncan, Community Volunteer

Peoples Bank
Ben Bochnowski

Dean White's Birthday

Craig White

Lisa Schaefer's Birthday

Gerald & April Schaefer

Margot Clark

Bonnie Meyer

Terri and Dale Williams

Penelope Castor



PHOTOS FROM TOP LEFT TO RIGHT: PARTICIPANTS AT THE MONEY TALK ENGAGE WITH DR. CYNDI WALSH'S PRESENTATION ON REAL-WORLD FINANCIAL SKILLS / ATTENDEES JACK SVETICH AND RAE HOLOK COLLABORATE ON A FINANCIAL EXERCISE DURING THE EVENT / PRIZE WINNER AMBER BROWN CELEBRATES WITH DR. CYNDI WALSH FOLLOWING THE EVENING'S DRAWING.



EMPOWERING THE NEXT GENERATION

The Money Talk Pilot Inspires Young Adults

Young adults gathered in Crown Point for an evening of learning, connection, and actionable money skills.

On Thursday, August 14, 2025, young adults gathered at The East Point Venue in Crown Point for the pilot event The Money Talk. Designed for ages 18–30, the free program offered financial skills in a way that felt both practical and empowering. The evening combined education, connection, and fun—equipping participants with tools to strengthen their financial futures while enjoying community, conversation, and a few surprises along the way.

The session was led by Dr. Cyndi Walsh, a seasoned financial executive with more than 35 years of experience in wealth management, investment strategy, and nonprofit leadership. Known for her ability to translate complex concepts into real-world solutions, Dr. Walsh guided participants through topics such as budgeting that fits real life, building and managing credit, investing 101, and student loan strategies. Her engaging and approachable style helped attendees not only understand the information but also leave with actionable steps they could begin applying immediately.

The event created an atmosphere that was as enjoyable as it was educational. Guests shared pizza and conversation, relaxed with an open bar, and took part in prize drawings and giveaways. Each attendee received a complimentary copy of *The Psychology of Money* by Morgan Housel to continue their learning journey beyond the evening. One of the highlights was the random prize

drawing, where Amber Brown won \$100 in cash along with an additional \$100 to donate to a nonprofit of her choice.

Reflecting on her experience, Amber shared, “I was extremely excited to attend this event and learn practical financial skills that could guide me to financial freedom. After leaving this event, I now have an actionable plan to start budgeting, saving, and investing. Listening to Dr. Walsh in person was so much more valuable than online videos. I’m grateful for the opportunity, and I look forward to more events like this in the future.” Amber chose to direct her \$100 donation to St. Margaret’s House in South Bend, an organization where she previously volunteered and described as “a community with a mission to serve and uplift one another.”

The event was overwhelmingly positive, reinforcing the value of providing young adults with opportunities to engage in financial learning in a way that is accessible and impactful. Dr. Walsh reflected, “The feedback from our first event was very encouraging. Participants left feeling empowered to actively manage their financial future and build wealth. That was our goal. Hopefully this program inspires the next generation of donors to the Crown Point Community Foundation.”

Sponsored by Tim and Dr. Cyndi Walsh, The Money Talk gave participants the confidence, skills, and motivation to take charge of their financial futures and, in the process, planted the seeds for a stronger, more resilient community.

WELCOME NEW BOARD MEMBER & STAFF

The Board of Directors and CPCF staff plays an integral role in the Crown Point Community Foundation.

The Board select the recipients of CPCF grants, help to solicit donations, and promote the Foundation throughout the community.

The staff helps run the day-to-day operations of the office and work directly with donors and local nonprofits.

We are proud to welcome the following outstanding business and community leaders to the CPCF.



SCOTT BABJAK
TELEX PHARMACEUTICALS



BUFFY ADAMS
VICE PRESIDENT OF PHILANTHROPY



JIM NEWTON
ACCOUNTING AND FINANCE MANAGER

SCOTT BABJAK

Scott Babjak grew up in Crown Point, graduating from Crown Point High School in 1993 before earning his degree from Saint Joseph's College in 1997. He is currently Area Vice President at Telix Pharmaceuticals, where he leads teams and supports growth in the healthcare industry.

Deeply connected to the community, Scott served on the Crown Point Community School Corporation Board from 2017 to 2024 and as a board member of Cal Ripken Baseball. He values opportunities to give back and believes strongly in supporting organizations that strengthen local families.

Scott and his wife, Tracy, have two sons, Braden and Grayson. Much of his free time is spent watching them compete in lacrosse, football, and wrestling. He also enjoys cooking and family dinners.

Scott is honored to serve on the Crown Point Community Foundation Board and looks forward to continuing to help strengthen the community he has always called home.

BUFFY ADAMS

Buffy D. Adams serves as Vice President of Philanthropy at the Crown Point Community Foundation, bringing more than two decades of nonprofit leadership and corporate experience to this newly created role. She thrives on connecting people with causes that create positive change, a purpose that aligns perfectly with the mission of the Foundation.

Prior to joining CPCF, Buffy held leadership roles at both women and youth-focused nonprofit organizations, where she built lasting relationships and mobilized resources to uplift communities.

In addition to her professional work, Buffy is a motivational speaker, author, and is known as "The Official Hope Dealer." She encourages people to live authentically and discover hope and joy through faith and inspiration. A graduate of Purdue University Calumet with a degree in Communications, Buffy is currently pursuing her master's degree in business and ministry.

Buffy is honored to serve on the Crown Point Community Foundation team and looks forward to advancing its mission of building a stronger, more compassionate community in Northwest Indiana.

JIM NEWTON

Jim Newton serves as Accounting & Finance Manager at the Crown Point Community Foundation, bringing extensive financial expertise and a strong commitment to community service. After many years working in the banking industry, Jim recently relocated to Indiana and is eager to put his skills to work supporting the Foundation's mission.

Throughout his career, Jim developed expertise in financial analysis, risk management, and operational accounting. His years in banking equipped him with both an attention to detail and the ability to see the broader strategic picture.

Outside of work, Jim's life is centered around faith and family. He and his wife, Kay, are proud parents to their daughter, Kendall. He is also an avid soccer fan, cheering faithfully for his favorite team, Arsenal.

Jim is honored to be part of the Crown Point Community Foundation team and is committed to applying his financial stewardship to help strengthen the community.



PHOTOS CLOCKWISE FROM TOP LEFT: KARA HARRISON, HEDGES FACILITATOR, LENDS HER EXPERTISE AS SHE SUPPORTS DONNA PACE, THE CEO OF NEW LEASH ON LIFE / MARY NIELSEN, PRESIDENT OF CPCF, AND KATIE SLY, PROGRAM DIRECTOR AT CPCF, EXPRESS GRATITUDE TO ALEXIUS BARBER, PUBLIC AFFAIRS AND ECONOMIC DEVELOPMENT MANAGER AT NIPSCO, AND SUSANA BATRES, PUBLIC AFFAIRS SPECIALIST AT NIPSCO FOR THEIR GENEROUS SUPPORT AS A PLATINUM SPONSOR OF THE NONPROFIT ACADEMY / ERIN HEDGES AND KARA HARRISON, FACILITATORS OF THE NONPROFIT ACADEMY WORKSHOP, ASSIST DIANA EDELSON, BOARD MEMBER AT LAKE CENTRAL EDUCATION FOUNDATION AND OFFICE MANAGER AT ST. JOHN-DYER CHAMBER OF COMMERCE WITH HER QUESTION / ATTENDEES AT THE LEAD WITH PURPOSE: STRATEGIES FOR EFFECTIVE BOARD GOVERNANCE WORKSHOP / PARTICIPANTS TAKE NOTES DURING THE PRESENTATION.

STRENGTHENING THE SECTOR

Nonprofit Academy Empowers Leaders to Grow



The Crown Point Community Foundation's Nonprofit Academy raises the bar with Board Governance Workshop.

The Crown Point Community Foundation's Nonprofit Academy continues to set the standard for nonprofit professional development in Northwest Indiana. Designed to support those seeking to enhance their skills and broaden their impact, the Academy provides annual educational and networking opportunities that equip nonprofit professionals with the knowledge, tools, and resources needed to strengthen their organizations and amplify their mission.

Most recently, the Academy hosted its two-day workshop, "Lead with Purpose: Strategies for Effective Board Governance,"

delivered by the outstanding team at Hedges. Over the course of two powerful days, 28 nonprofit leaders and board members came together to explore strategies for effective governance and intentional leadership. Participants gained critical insights into board responsibilities, healthy staff-board dynamics, building and sustaining strong boards, vision-setting, fundraising best practices, and fostering meaningful engagement in the boardroom.

"This workshop was an enriching and invigorating experience," shared Kamryn Shtompil, Director of Operations at Family House, Inc. "The material was well presented, shining an engaging light on board governance. I felt I was not only told information but given opportunities to attempt new skills in real time. The tools and

PRESENTING SPONSOR:

DEAN AND BARBARA WHITE
FAMILY FOUNDATION

PLATINUM SPONSOR:

niSource
CHARITABLE FOUNDATION

NIPSCO
A niSource Company

ADDITIONAL PARTNERS:

JOHN & ANN BARNEY
FAMILY FOUNDATION

**CROWN POINT
community
foundation**
CREATING A BETTER FUTURE
IN SOUTHLAKE COUNTY



HELP US LEAD, ENGAGE
AND ENRICH OUR COMMUNITY



WHY WE GIVE: Dawn Foods fuels the creativity and success of bakers and food entrepreneurs. Baking is more than ingredients — it's about delight, growth, and possibility. We provide innovation, expertise, and partnership to elevate every experience, while also investing in our communities through Hunger Prevention and Health, Education, Community Vibrancy, and Volunteerism.

MISSION: At Dawn Foods, our mission is to delight customers worldwide with innovation, quality, and trusted expertise. For over a century, we've partnered with bakers to grow businesses and inspire joy. Beyond baking, we strengthen communities by supporting Team Members and organizations that foster vibrancy, belonging, and positive impact—carrying forward a legacy of partnership, passion, purpose, and service.



<
Symphony on the Lawn:
Dawn Foods presents a donation of \$5,000 to our friends at CPCF for the Symphony on the Lawn.



www.dawnfoods.com

NONPROFIT ACADEMY, CONTINUED FROM PAGE TWENTY-ONE



ATTENDEES AT THE LEAD WITH PURPOSE: STRATEGIES FOR EFFECTIVE BOARD GOVERNANCE TWO-DAY WORKSHOP PAY ATTENTION TO THE PRESENTATION BY HEDGES.

resources provided will be beneficial to bring back to my team and provide a perfect mix of reflection and action items. This workshop was affirmative; reminders of what we are doing well, while also enlightening areas to continue growing and developing. I feel challenged and motivated."

Kamryn also noted the value of connection: "The workshop provided opportunity for networking, cultivating an environment of collaboration. This was impactful for me. I am grateful for the Crown Point Community Foundation for offering this workshop on an often overlooked, but foundational aspect of nonprofit work."

As CPCF Program Director Katie Sly reflected, "The Nonprofit Academy is about more than training—it's about cultivating strong, resilient organizations that are equipped to drive greater impact. We are thrilled to see so many nonprofit leaders embrace these opportunities and look forward to continuing to support their growth."

Thank you to everyone who is supporting this new initiative and is helping make it a success, especially our Presenting Sponsor, the Dean and Barbara White Family Foundation; our Platinum Sponsor, NIPSCO; and additional support from the John & Ann Barney Family Foundation. Thanks also to the Crown Point Community Library for hosting these events and our CPCF Board of Directors for their unwavering commitment to our community. We look forward to driving further growth and impact in our community together!

Coming up next for the Nonprofit Academy is its highly anticipated annual conference, **The Power of We – Stress Less. Connect More. Achieve Big**, taking place on October 28, 2025, at Avalon Manor Banquet Center. This one-day event will feature nine breakout sessions on timely topics including program impact measurement, technology solutions for nonprofits, social media strategy, and nonprofit financial health. Attendees will hear from keynote speakers Dr. Deb Mashek and Dr. Rebecca Heiss, and connect with peers during dedicated networking opportunities.

5

Five Questions for Jennifer Linsley

MEMBER OF THE BOARD OF DIRECTORS
GRANT/SCHOLARSHIP COMMITTEE

Jennifer Linsley graduated from Crown Point High School and was very active in cheerleading and multiple clubs. She earned her bachelor's degree from Butler University in secondary education and English. She taught English at Merrillville High School for five years while she earned her master's degree in administration from Purdue. She has been an administrator in Crown Point since 2000 and has been the principal at Jerry Ross Elementary School since 2003. She has completed one year of a doctoral program at Johns Hopkins University.

"I am passionate about the Foundation's mission to improve lives in South Lake County and eager to contribute my time and skills to this important cause," Jennifer said.

1. What do you like to do for fun?

I love to travel. I am inspired by learning about other cultures and people watching. People are fascinating!

2. When were you most satisfied in your job?

I am blessed to have a job that is satisfying the majority of the time. I have been an educator for the past 30 years and still feel fulfilled by watching my students and staff members grow and develop. I love watching that lightbulb moment when a person truly understands a concept or learns to do something new.

3. What are you most proud of?

I am most proud of my children. My sons are now 32 and 24 years old and I have enjoyed watching them develop and grow into kind, responsible young men. I also have a 15 year old step-son and a 12 year old step-daughter that are keeping me young and on my toes!

4. What is your personal mission statement?

Never stop growing. I always strive to be a better person today than I was yesterday.

5. What's the best advice you've ever received?

The best advice I ever received was to not let other people rent space in my head.



JERRY ROSS
ELEMENTARY SCHOOL



CROWN POINT
**community
foundation™**

PO Box 522
Crown Point, IN 46308

CREATING A BETTER FUTURE
IN SOUTH LAKE COUNTY

TOGETHER WE BUILD A BETTER TOMORROW

The Crown Point Community Foundation is a public charity. Small donations are just as important as large donations to make sure that we serve the public's best interests.

**OUR SUPPORT FOR THE COMMUNITY DOES NOT COME FROM JUST ONE PERSON,
ONE FAMILY, OR ONE COMPANY BUT A STEADY STREAM OF CONTRIBUTIONS
FROM A BROAD CROSS-SECTION OF THE GENERAL PUBLIC.**

If you have a cause you care about in the community, we have a fund to support your interest. It's easy to make a donation. Mail your check today in the enclosed envelope provided or simply donate online at: thecpcf.org/donate.html. We invite you to be a part of your public Foundation so that together we can do more good things in our community!

Upcoming Crown Point Community Foundation Events:

Nonprofit Academy - The Power of We - One-Day Conference | Tuesday, October 28, 2025

Giving Tuesday | Tuesday, December 2, 2025



HELP US LEAD, ENGAGE AND ENRICH OUR COMMUNITY

Community Partners are local companies or individuals who join forces with the Crown Point Community Foundation to promote and expand philanthropy, address community issues, and develop nonprofit excellence.



BILLIE AND
FRAN HOFFMAN
FAMILY FOUNDATION



DEAN AND
BARBARA WHITE
FAMILY FOUNDATION

Edward Jones
MAKING SENSE OF INVESTING

EUGENE AND
JEAN WEASE



FORSYTHE
WEALTH MANAGEMENT
RESEARCH RELATIONSHIPS RESULTS

Franciscan HEALTH
Crown Point



HOFFMAN
CHARITABLE FOUNDATION

JOHN & ANN BARNEY
FAMILY FOUNDATION



Morgan Stanley



THE TIMES
MEDIA COMPANY | nwi.com

